

#10025

New Apartments For sale In Tsiflikoudia Area

📍 Tsiflikoudia, Limassol

€215,000 +VAT





Overview

Specifications

Bedrooms



Bathrooms



Covered



Type

Apartment

Status

Under construction

Covered veranda

12 m²

Energy efficiency rating



Description

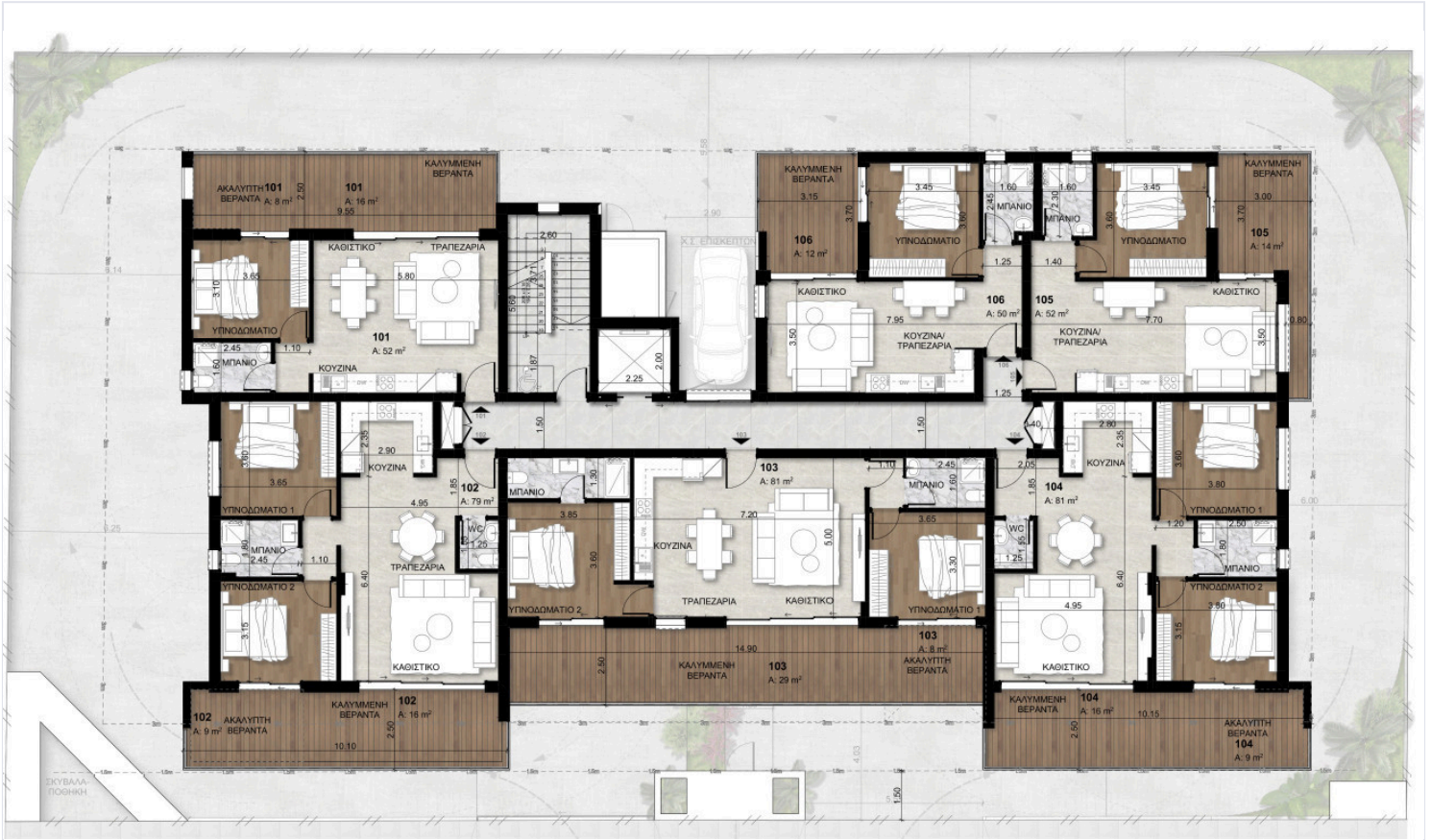
A modern apartment under construction in the popular area of Tsiflikoudia. This bright and comfortable home offers 50 m² of internal space, featuring one spacious bedroom and one well-designed bathroom.

This apartment is designed with modern energy standards, holding an Energy Efficiency Class A rating. You will benefit from lower energy bills and a comfortable indoor climate all year round. Suitably located close to amenities and public transportation, this property is an excellent choice for professionals, couples, or investors looking for potential growth.

*Location on map is indicative.



Floor plans



Additional information

Facilities

Heating, Provision

Solar water heater

Storage

Features

Easy access to highway

Easy access to main roads

Granite countertops

Near amenities

Pressurized water system

Thermal insulation

Contact us



Katerina Athini

✉ katerina@cyprusdomus.com

