

#10031

New Apartments For Sale In Petrou & Pavlou Area

📍 Petrou Kai Pavlou, Limassol

€372,000 +VAT





Overview

Specifications

Bedrooms



2

Bathrooms



2

Covered



75 m²

Type

Apartment

Covered veranda

22.5 m²

Status

Off plan

Energy efficiency rating



Description

This spacious unit offers an internal area of 75 m², featuring two comfortable bedrooms and two well-appointed bathrooms. The open-plan living and dining area create a welcoming atmosphere, perfect for both relaxation and entertainment.

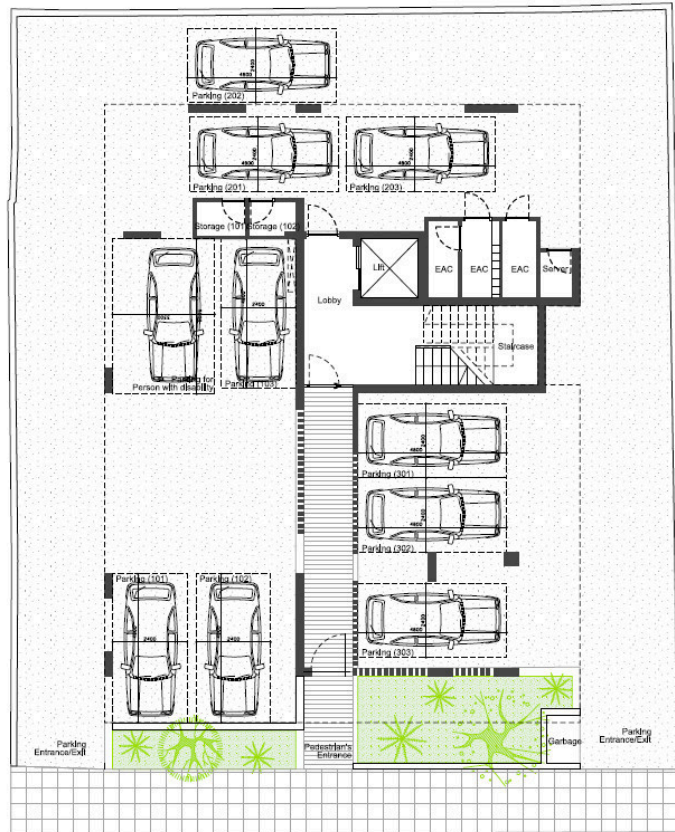
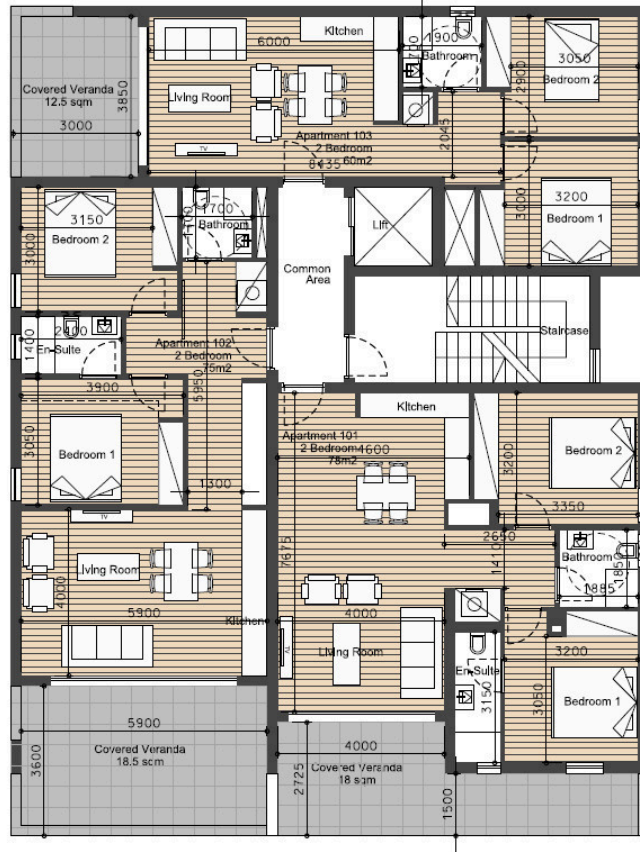
Petrou Kai Pavlou is known for its vibrant yet peaceful environment. The area is popular with families and professionals who appreciate the blend of urban convenience and quiet residential streets. Residents enjoy easy access to shops, schools, cafes, and parks, making daily errands simple and enjoyable. Public transport links are also nearby, connecting you easily to the rest of the city.

This apartment promises modern finishes, a thoughtful layout, and excellent energy efficiency with an A rating. It's an ideal choice for those looking for a comfortable home or a smart investment close to all essential amenities.

*Location on map is indicative.



Floor plans



Additional information

Facilities

Parking, Covered

Solar water heater

Storage

Features

Ceramic tiles

En suite bathroom

Laminate flooring

Near amenities

Contact us



Katerina Athini

✉ katerina@cyprusdomus.com

