

#10033

# New Apartments For Sale In Petrou & Pavlou Area

📍 Petrou Kai Pavlou, Limassol

€392,000 +VAT





# Overview

## Specifications

Bedrooms



2

Bathrooms



2

Covered



75 m<sup>2</sup>

Type

**Apartment**

Status

**Off plan**

Covered veranda

**22.5 m<sup>2</sup>**

Energy efficiency rating



## Description

This spacious unit offers an internal area of 75 m<sup>2</sup>, featuring two comfortable bedrooms and two well-appointed bathrooms. The open-plan living and dining area create a welcoming atmosphere, perfect for both relaxation and entertainment.

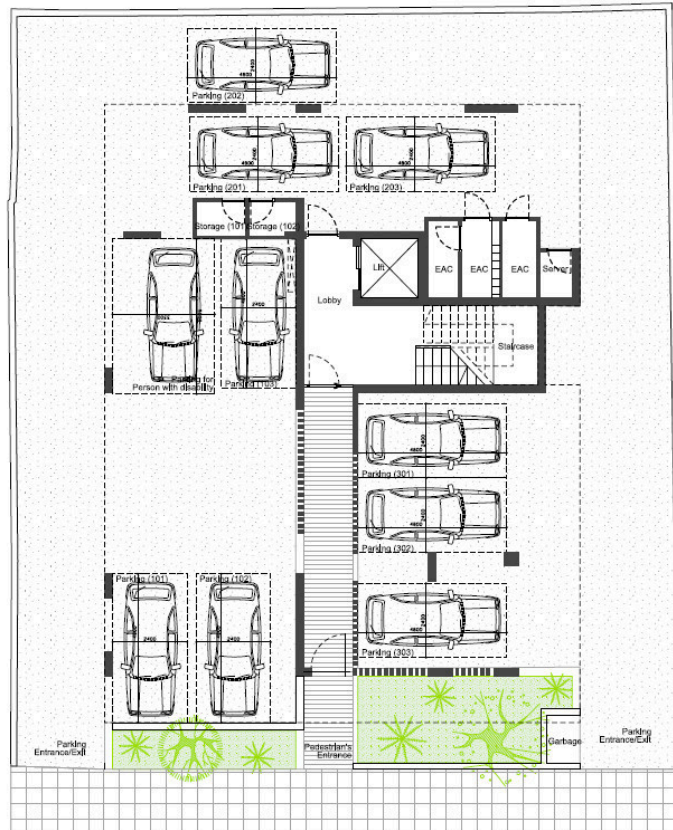
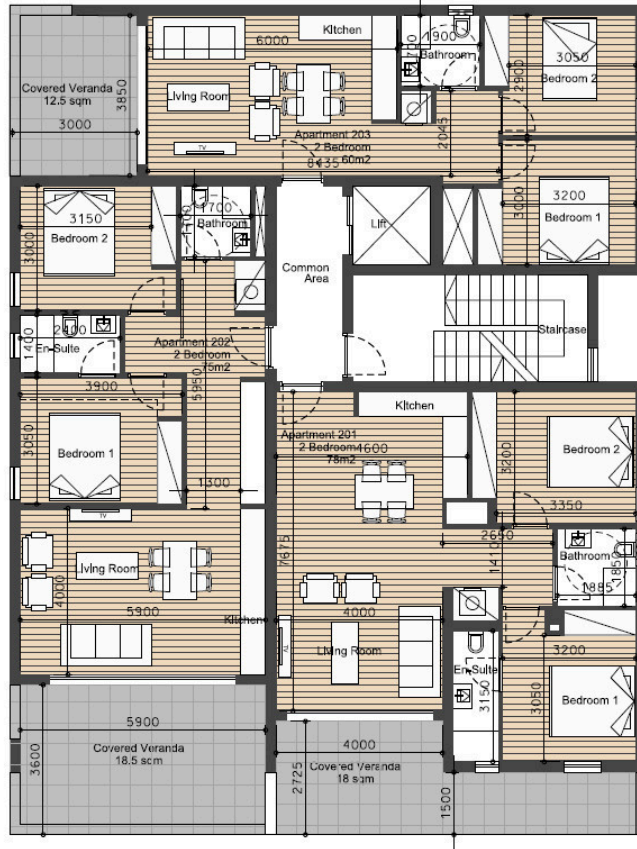
Petrou Kai Pavlou is known for its vibrant yet peaceful environment. The area is popular with families and professionals who appreciate the blend of urban convenience and quiet residential streets. Residents enjoy easy access to shops, schools, cafes, and parks, making daily errands simple and enjoyable. Public transport links are also nearby, connecting you easily to the rest of the city.

This apartment promises modern finishes, a thoughtful layout, and excellent energy efficiency with an A rating. It's an ideal choice for those looking for a comfortable home or a smart investment close to all essential amenities.

\*Location on map is indicative.



# Floor plans



# Additional information

## Facilities

Parking, Covered

Solar water heater

Storage

## Features

Ceramic tiles

En suite bathroom

Laminate flooring

Near amenities

## Contact us



**Katerina Athini**

✉ [katerina@cyprusdomus.com](mailto:katerina@cyprusdomus.com)

