

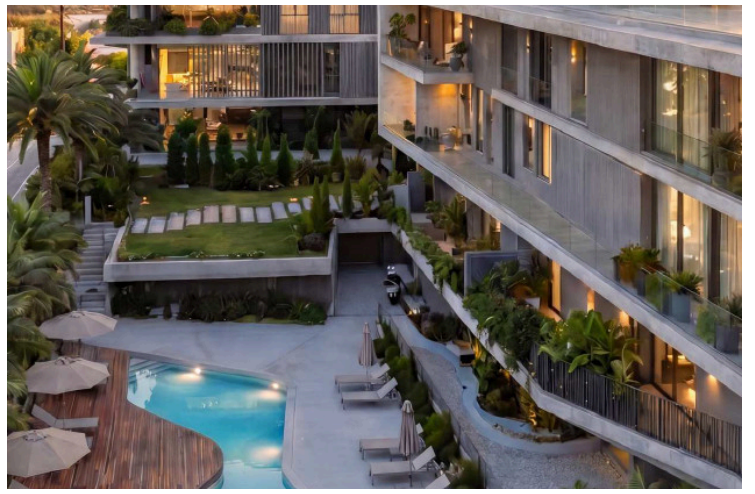
#10071

New Apartments For Sale In Panthea Area

📍 Panthea, Limassol

€425,000 +VAT





Overview

Specifications

Bedrooms



2

Bathrooms



2

Covered



85 m²

Type

Apartment

Status

Off plan

Covered veranda

17 m²

Description

This spacious home features an internal area of 85 square meters, thoughtfully designed with two bedrooms and two bathrooms, perfect for couples or small families.

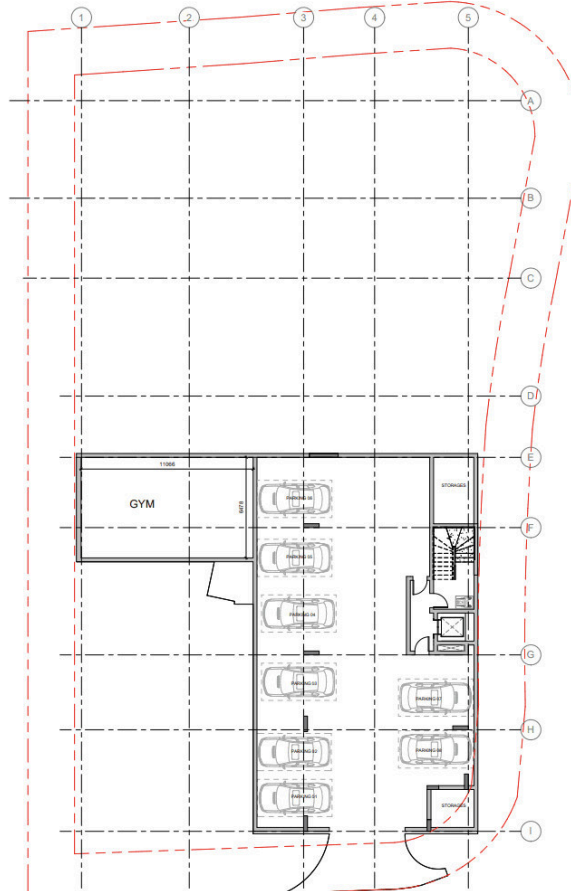
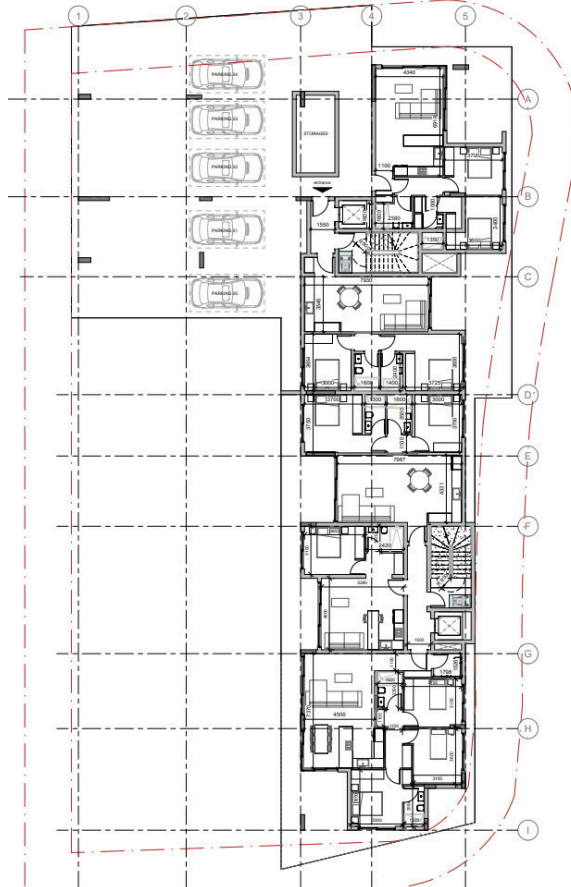
The living space extends towards large windows that provide a stunning panoramic view, making everyday living both relaxing and inspiring.

Residents will have access to a beautiful communal swimming pool, ideal for unwinding after a long day. The building also includes a fully equipped gym, ensuring you can maintain a healthy and active lifestyle right at your doorstep.

*Location on map is indicative.



Floor plans



Additional information

Facilities

Aircondition, Central system

Gym

Landscaped garden

Parking, Covered

Pool, Communal

Sauna

Solar photovoltaic panels

Solar water heater

Storage

Features

Electric car charger (provision)

High ceilings

Panoramic view

Smart home automation
(provision)

Thermal insulation

Contact us



Katerina Athini

✉ katerina@cyprusdomus.com

