

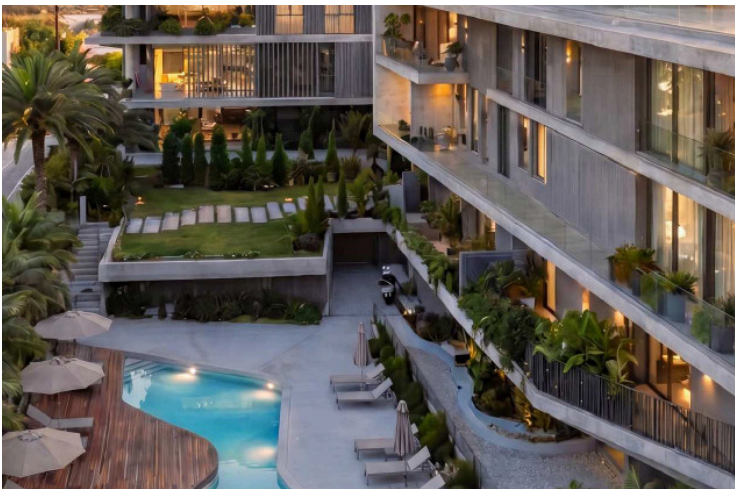
#10074

# New Apartment With Roof Garden For Sale In Panthea Area

📍 Panthea, Limassol

€635,000 +VAT





# Overview

## Specifications

Bedrooms



3

Bathrooms



3

Covered



120 m<sup>2</sup>

Type

**Apartment**

Covered veranda

**22 m<sup>2</sup>**

Roof garden

**50 m<sup>2</sup>**

Status

**Off plan**

## Description

Spacious apartment in the desirable Panthea area, offering 120 m<sup>2</sup> of well-designed internal space. This modern home features three comfortable bedrooms and three bathrooms, ensuring privacy and convenience for the whole family.

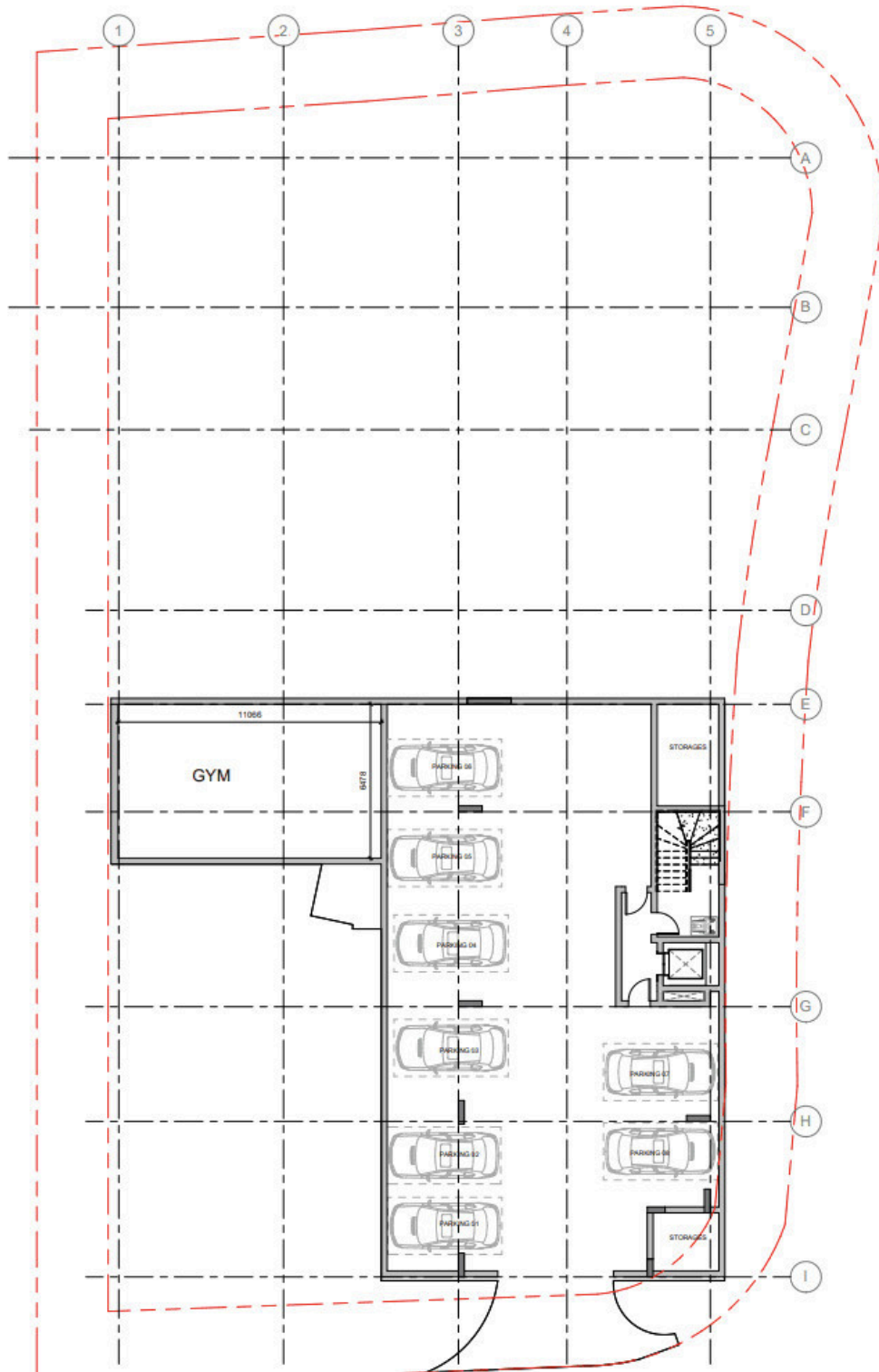
Panthea is known for its calm atmosphere and elevated position, providing stunning panoramic views of the city and sea. This peaceful neighborhood is close to schools, parks, shops, and quick connections to main roads, making it ideal for families and professionals.

The apartment is equipped with a central air conditioning system for year-round comfort. Residents can enjoy a large communal swimming pool and a fully equipped gym, perfect for relaxation and well-being.

\*Location on map is indicative.



# Floor plans



# Additional information

## Facilities

Aircondition, Central system

Gym

Landscaped garden

Parking, Covered

Pool, Communal

Sauna

Solar photovoltaic panels

Solar water heater

Storage

## Features

Electric car charger (provision)

High ceilings

Panoramic view

Roof garden

Smart home automation  
(provision)

Thermal insulation

## Contact us



**Katerina Athini**

✉ [katerina@cyprusdomus.com](mailto:katerina@cyprusdomus.com)

