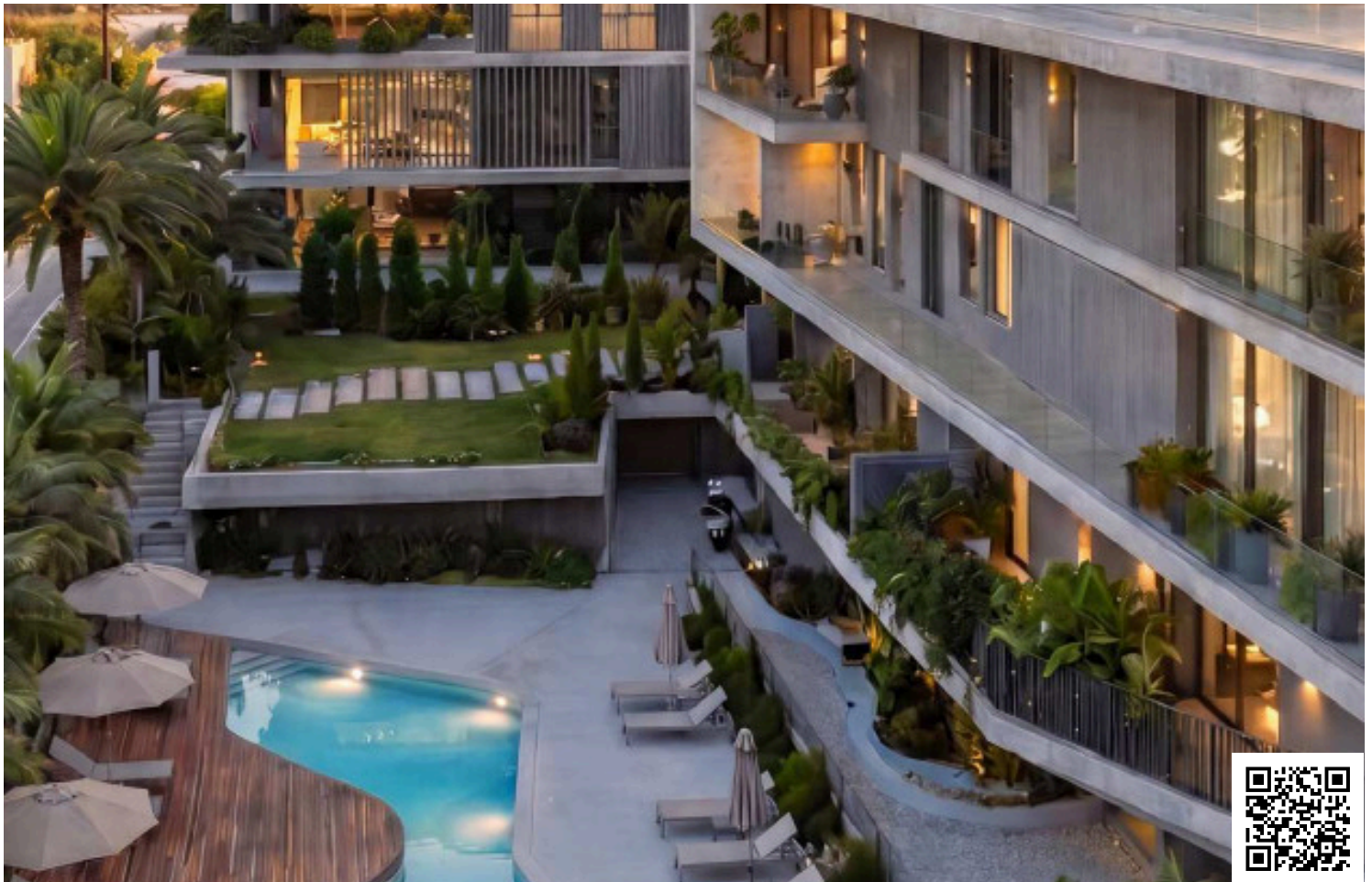


#10075

New Apartment With Roof Garden For Sale In Panthea Area

📍 Panthea, Limassol

€485,000 +VAT





Overview

Specifications

Bedrooms



2

Bathrooms



2

Covered



87 m²

Type

Apartment

Covered veranda

14 m²

Roof garden

50 m²

Status

Off plan

Description

Spacious apartment in the desirable Panthea area, offering 87 m² of well-designed internal space featuring two bedrooms and two bathrooms

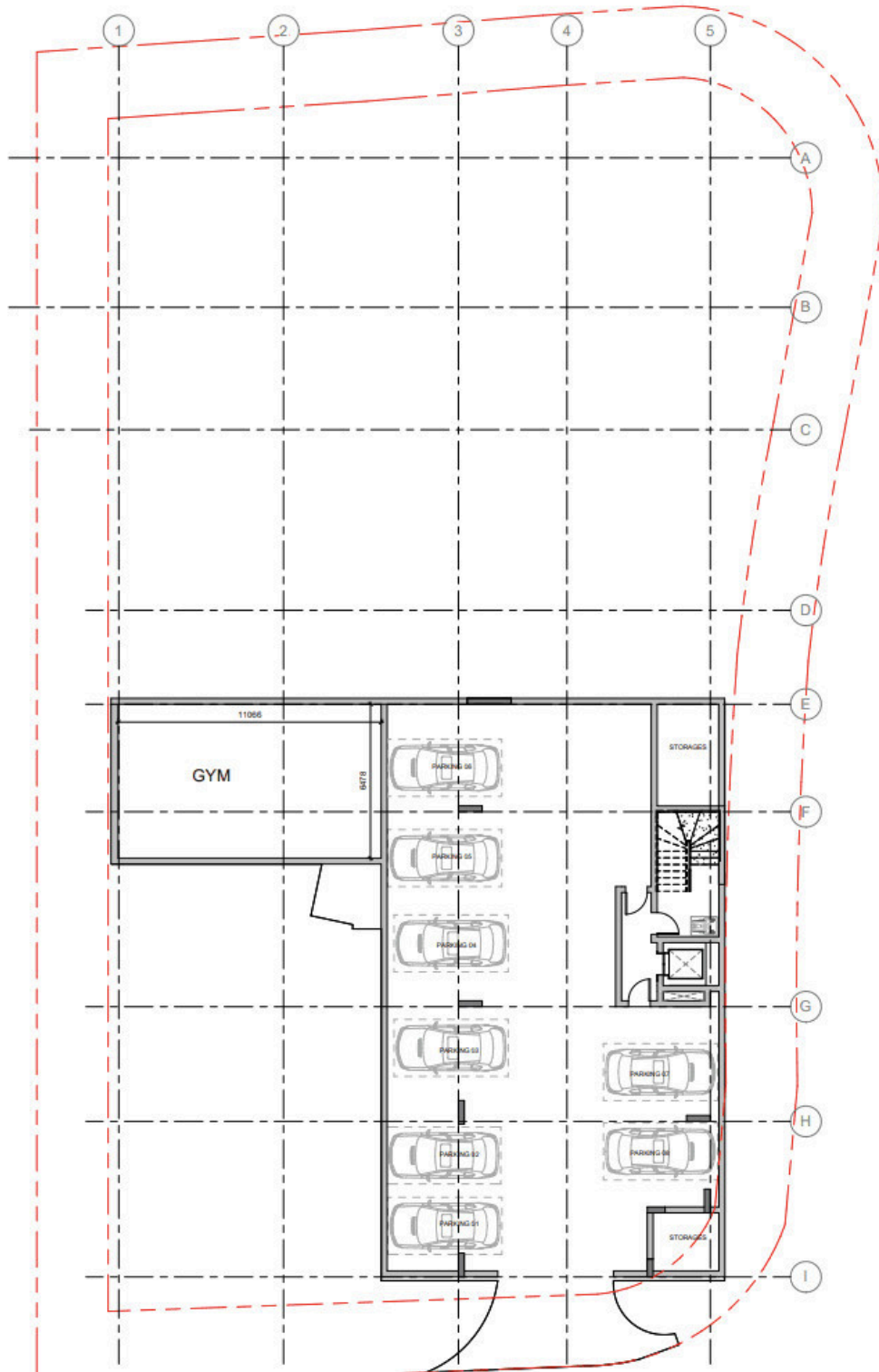
Panthea is known for its calm atmosphere and elevated position, providing stunning panoramic views of the city and sea. This peaceful neighborhood is close to schools, parks, shops, and quick connections to main roads, making it ideal for families and professionals.

The apartment is equipped with a central air conditioning system for year-round comfort. Residents can enjoy a large communal swimming pool and a fully equipped gym, perfect for relaxation and well-being.

*Location on map is indicative.



Floor plans



Additional information

Facilities

Aircondition, Central system

Gym

Landscaped garden

Parking, Covered

Pool, Communal

Sauna

Solar photovoltaic panels

Solar water heater

Storage

Features

Electric car charger (provision)

High ceilings

Panoramic view

Roof garden

Smart home automation
(provision)

Thermal insulation

Contact us



Katerina Athini

✉ katerina@cyprusdomus.com

