

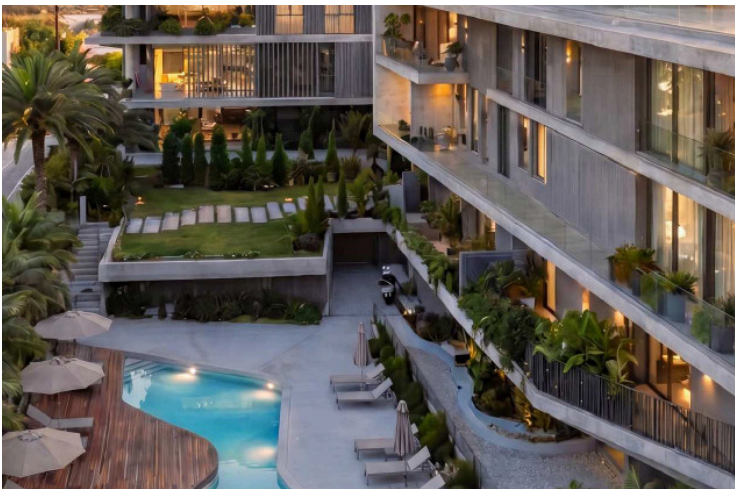
#10076

# New Apartments For Sale In Panthea Area

📍 Panthea, Limassol

€280,000 +VAT





# Overview

## Specifications

Bedrooms



Bathrooms



Covered

 51 m<sup>2</sup>

Type

**Apartment**

Status

**Off plan**

Covered veranda

**11 m<sup>2</sup>**

## Description

This modern one-bedroom apartment offers a smart and comfortable layout with 51 square meters of internal space. The apartment features a bright living area, a spacious bedroom, and a sleek bathroom. Large windows allow plenty of natural light and offer a beautiful panoramic view, making the home feel open and welcoming.

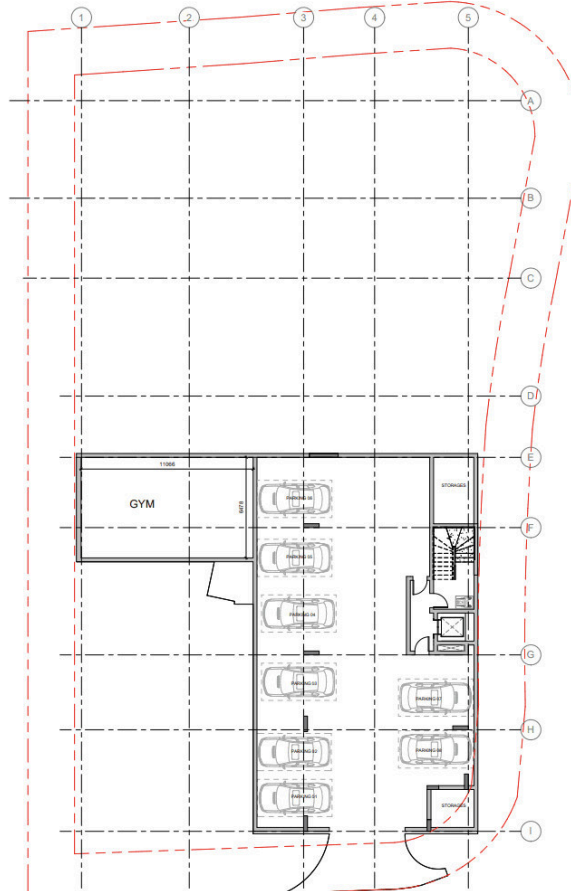
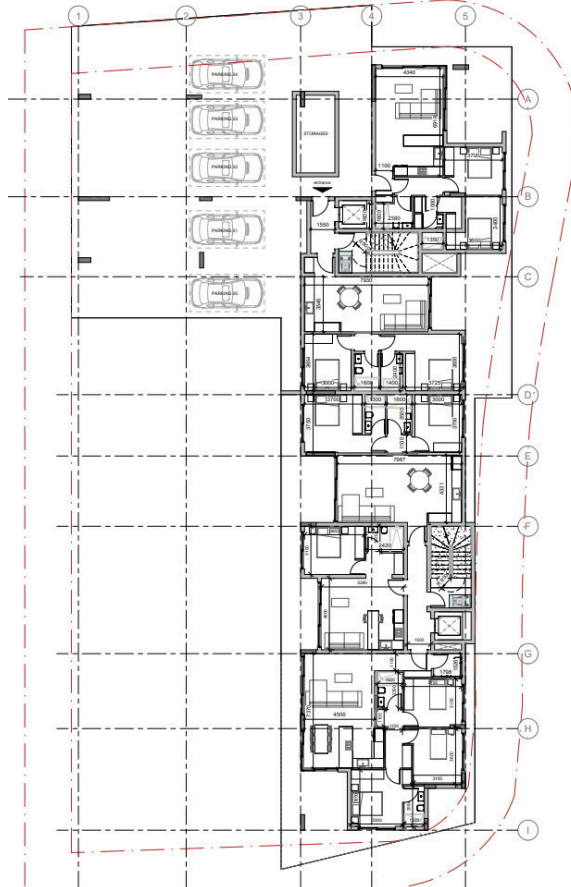
Residents will enjoy access to a well-maintained communal swimming pool, perfect for relaxing or socializing with neighbors. For those who prefer a more active lifestyle, a fully equipped gym is also available within the complex.

Located in Panthea, a peaceful residential area known for its scenic hills and well-kept surroundings, the apartment benefits from easy access to city amenities, schools, and parks. Panthea is popular for its calm atmosphere and strong sense of community, making it ideal for professionals, singles, or couples seeking a quiet yet convenient place to live.

\*Location on map is indicative.



# Floor plans



# Additional information

## Facilities

Aircondition, Central system

Gym

Landscaped garden

Parking, Covered

Pool, Communal

Sauna

Solar photovoltaic panels

Solar water heater

Storage

## Features

Electric car charger (provision)

High ceilings

Panoramic view

Smart home automation  
(provision)

Thermal insulation

## Contact us



**Katerina Athini**

✉ [katerina@cyprusdomus.com](mailto:katerina@cyprusdomus.com)

