

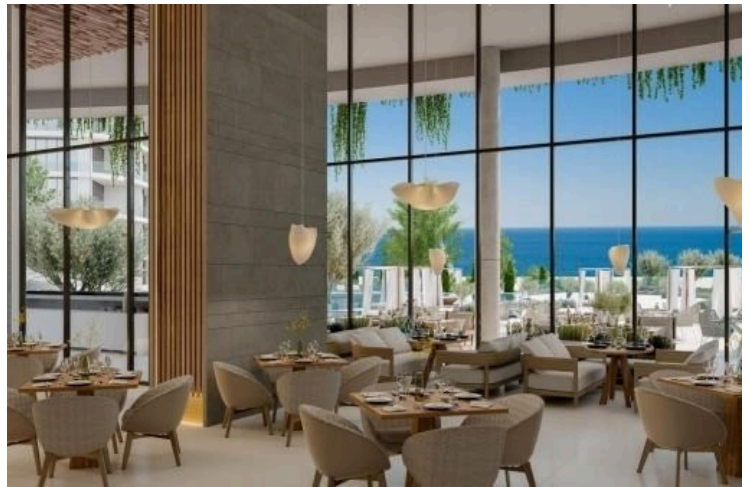
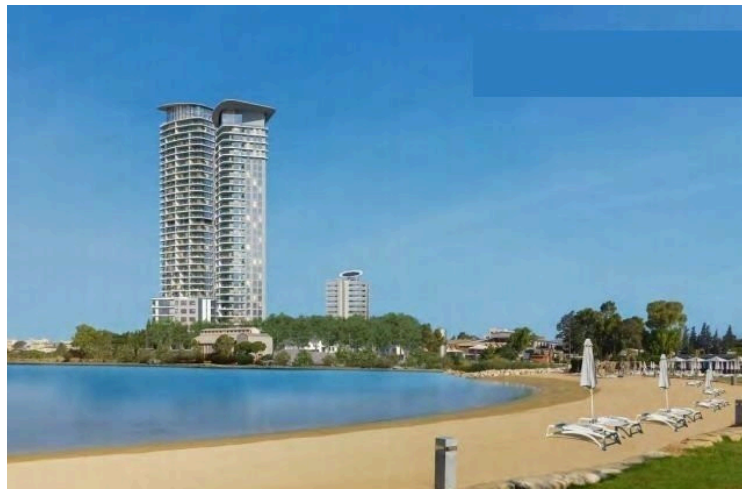
#1291

Luxury Apartments In Limassol With Uncompromised Sea views

📍 Tsiflikoudia, Limassol

€1,420,000 +VAT





Overview

Specifications

Bedrooms



2

Bathrooms



2

Covered

83.5 m²

Type

Apartment

Status

Under construction

Description

The Apartments are located in the heart of Cyprus' most thriving cosmopolitan city with uninterrupted views of Limassol and the sea providing world class facilities and second-to-none services.

There are a top-tier investment opportunity.

*Location on the map is indicative.



Floor plans



Additional information

Facilities

Childrens playground

Gym

Indoor pool, Private, heated

Landscaped garden

Parking, Underground

Pool, Communal

Spa

Features

En suite bathroom

Sea front

Sea view

Contact us



Vassilis Papadopoulos

☎ (+357) 99662023

✉ info@cyprusdomus.com

