

#1380

New Modern House In Erimi Area

 Erimi, Limassol

€310,000 +VAT





Overview

Specifications

Bedrooms

 **3**

Bathrooms

 **2**

Covered

 **145.4 m²**

Type

House

Toilets

1

Plot

244 m²

Status

Under construction

Description

The House is located in a very quite and residential area with easy access from/to the highway.

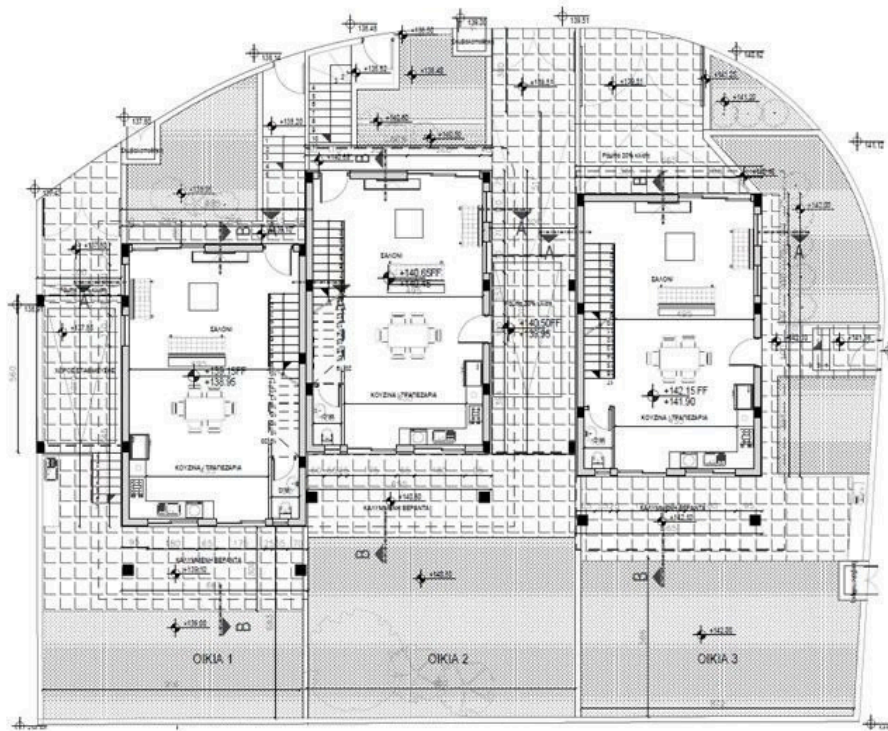
It consists of an open plan kitchen, dining and living area and 1 guest w/c on the ground floor, and 3 bedrooms and 2 bathrooms (1 en-suite) on the upper floor.

Featured House No. 1

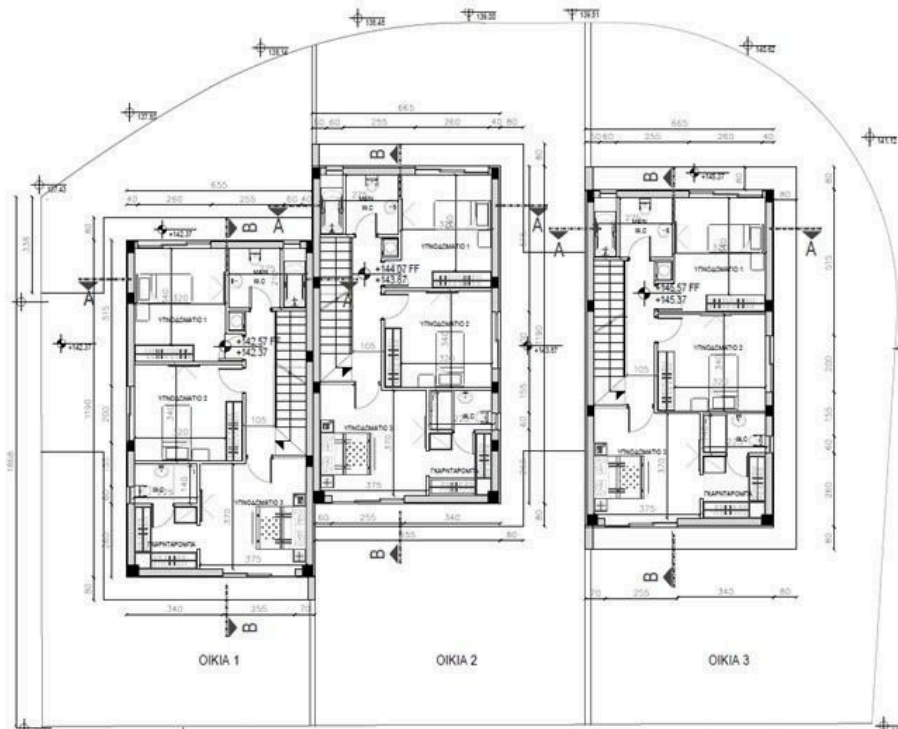
*Location on the map is indicative.

Floor plans

Ground Floor



Upper Floor



Additional information

Features

En suite bathroom

Walk-in closet

Contact us



Vassilis Papadopoulos

📞 (+357) 99662023

✉️ info@cyprusdomus.com