

#1427

New Commercial Building In Germasogeia Area

 Germasogeia, Limassol

€13,000,000 +VAT





Overview

Specifications

Covered

 **2423 m²**

Type	Commercial Building	Status	Under construction
Plot	1040 m²		

Description

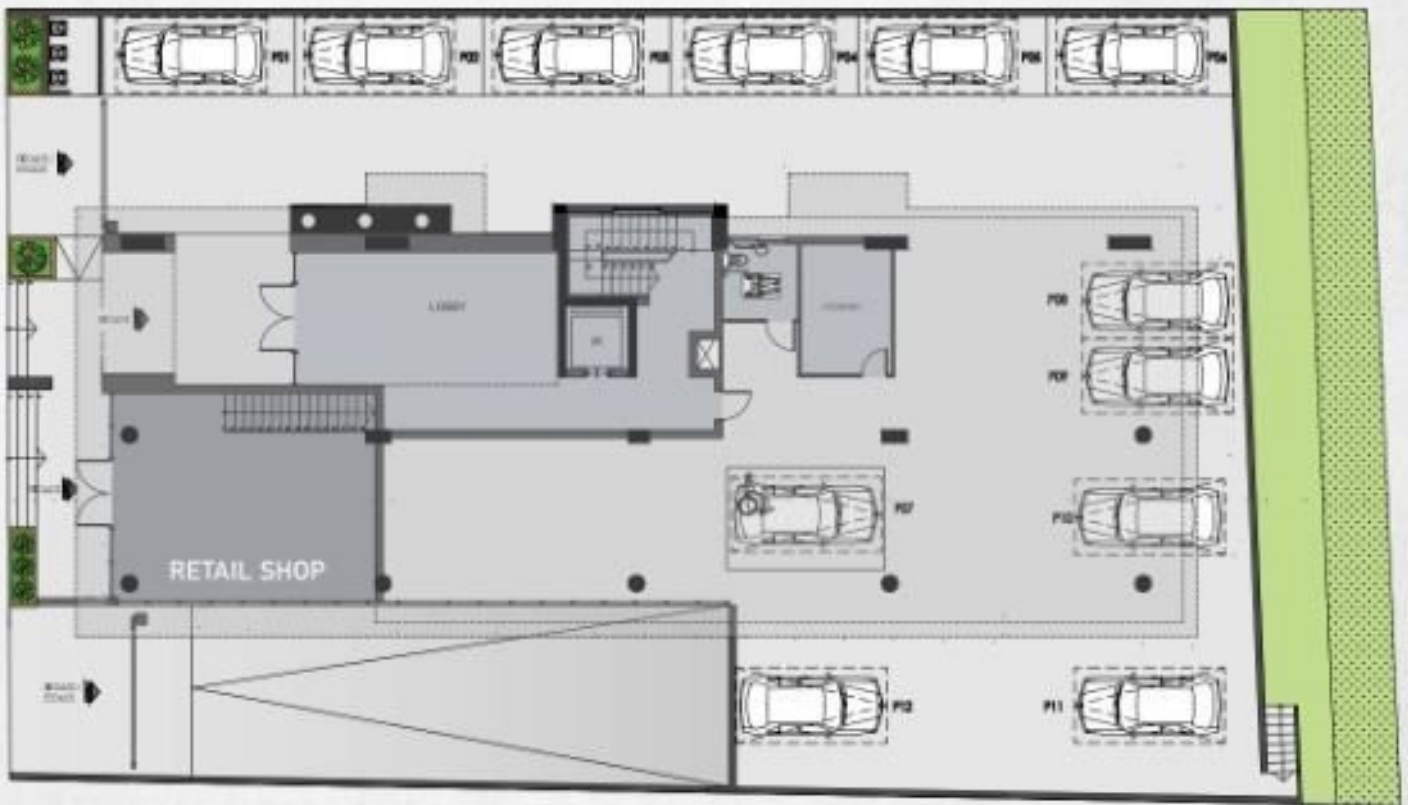
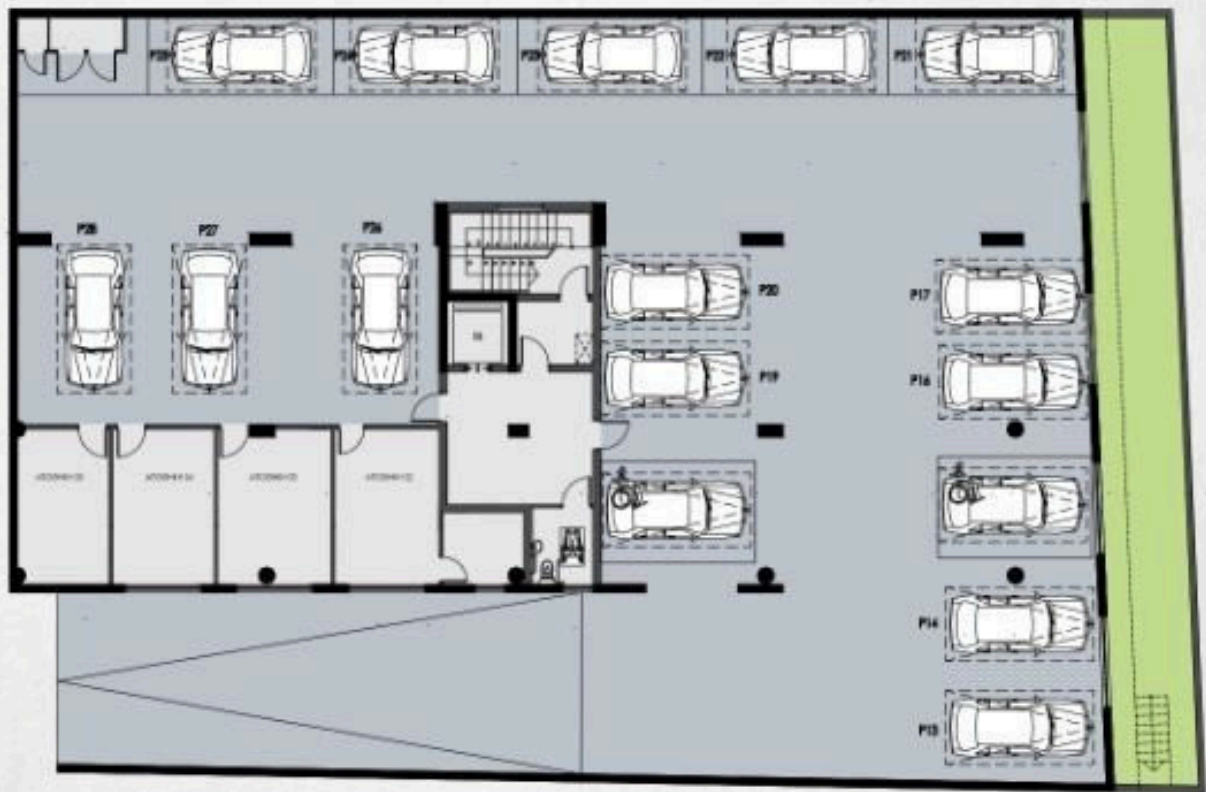
Designed to cater for today's business need ,the Project provides open spaces, giving a light and airy working environment, with floor to ceiling windows offering panoramic views across the city as well as views of the beautiful seafront of Limassol, thus providing a stimulation of both creativity and productivity.

This outstanding building comprises of 7 floors of commercial office space, all of which are meticulously designed to reach the level of quality any high caliber business deserves and expects.

Common Internal Area : 222 sqm



Floor plans



Additional information

Facilities

Aircondition, Central system

Features

Fire detector

Contact us



Vassilis Papadopoulos

☎ (+357) 99662023

✉ info@cyprusdomus.com

