

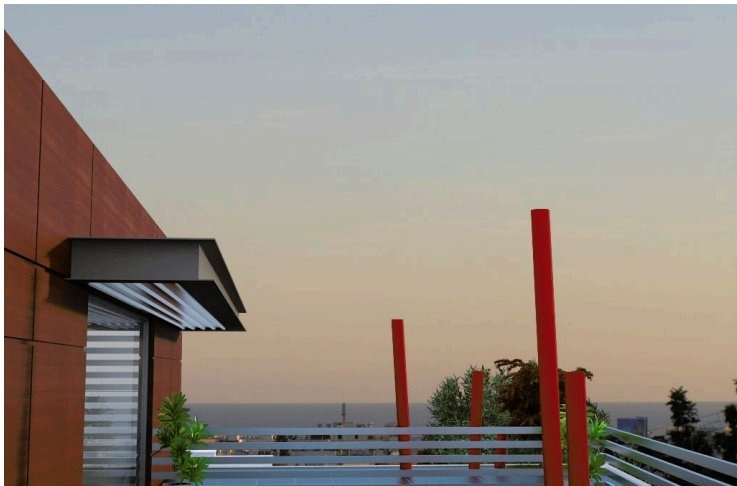
#1456

New Commercial Building with Roof Garden In Mesa Geitonia

 Mesa Geitonia, Limassol

€2,950,000 +VAT





Overview

Specifications

Covered

 **435 m²**

Type

Commercial Building

Status

Off plan

Plot

883 m²

Description

3-storey plus roof garden contemporary building located in Limassol.

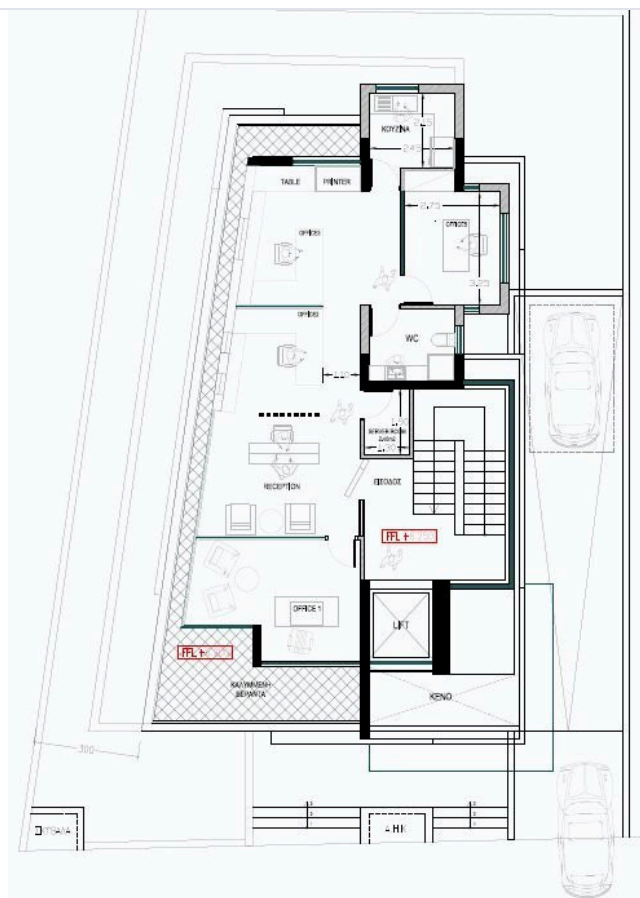
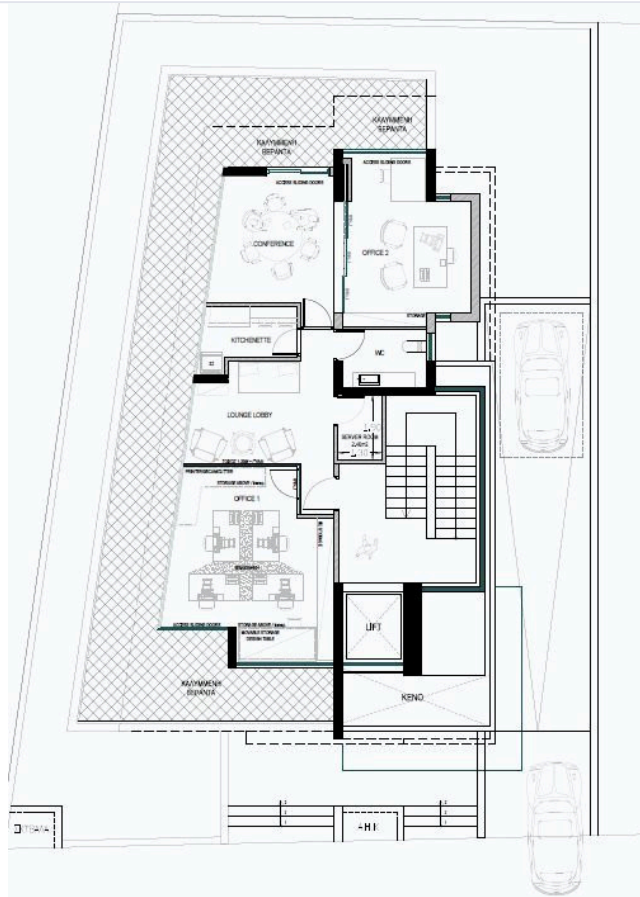
Each of its three floors boasting a unique design, synonymous with innovation and modernity.

Making it particularly attractive for prestigious companies seeking an inspirational building in which to set up their business.

The project is located in a very commercial position facing the main road (Limassol-Nicosia) and has very easy access from the highway and good view from the highway.



Floor plans



Additional information

Facilities

Aircondition, Central system

Elevator

Heating, Provision

Solar photovoltaic panels

Features

Alarm system (provision)

Double glazing

Fire detector

Raised floors

Roof garden

Contact us



Vassilis Papadopoulos

☎ (+357) 99662023

✉ info@cyprusdomus.com

