

#2115

Ground Floor Office At Polemidia Area

📍 Kato Polemidia, Limassol

€4,500 /month





Overview

Specifications

Covered

 320 m²

Type

Office

Status

Used

Toilets

4

Description

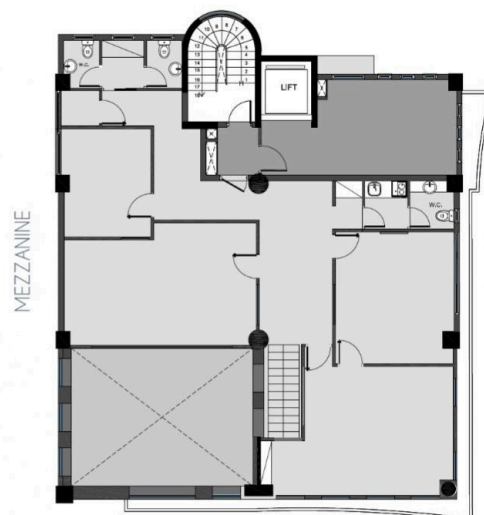
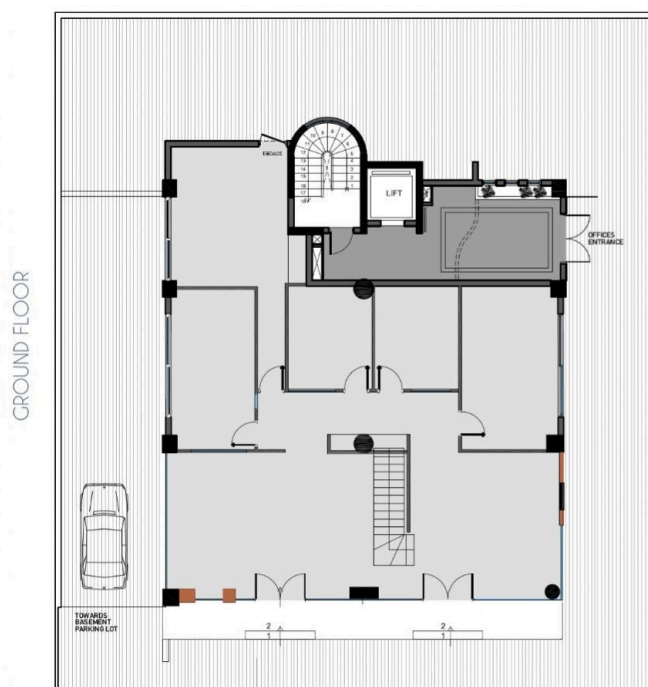
Ground Floor Office At Polemidia Area

- ? Fully partitioned
- ? Structural cabling
- ? Secured Parking
- ? Central Location

*Location on the map is indicative.



Floor plans



GROUND FLOOR & MEZZANINE

320m² COVERED AREA



Additional information

Contact us



Vassilis Papadopoulos

☎ (+357) 99662023

✉ info@cyprusdomus.com

