

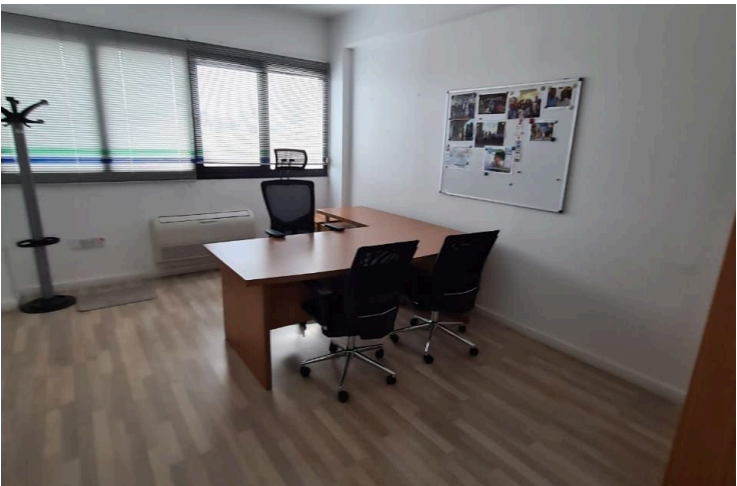
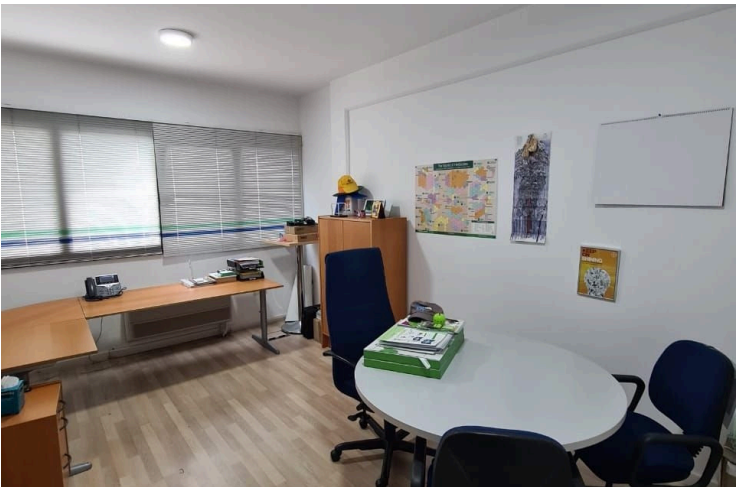
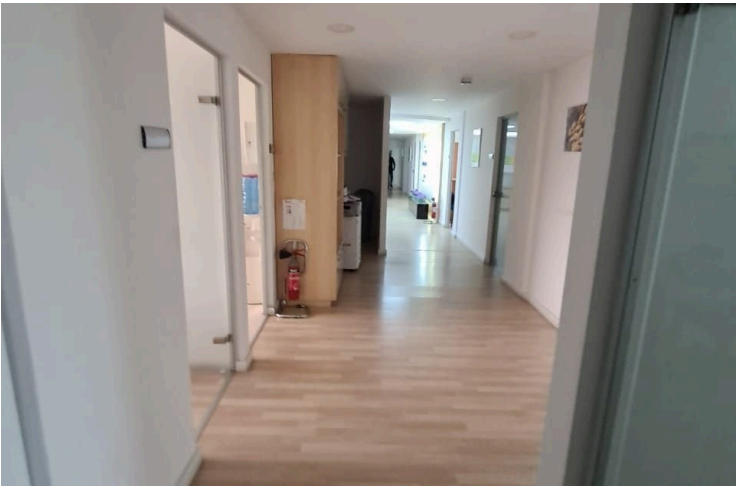
#2236

Completed Office In Petrou & Pavlou Area

📍 Petrou Kai Pavlou, Limassol

€10,000 /month





Overview

Specifications

Covered

 330 m²

Type

Office

Status

Used

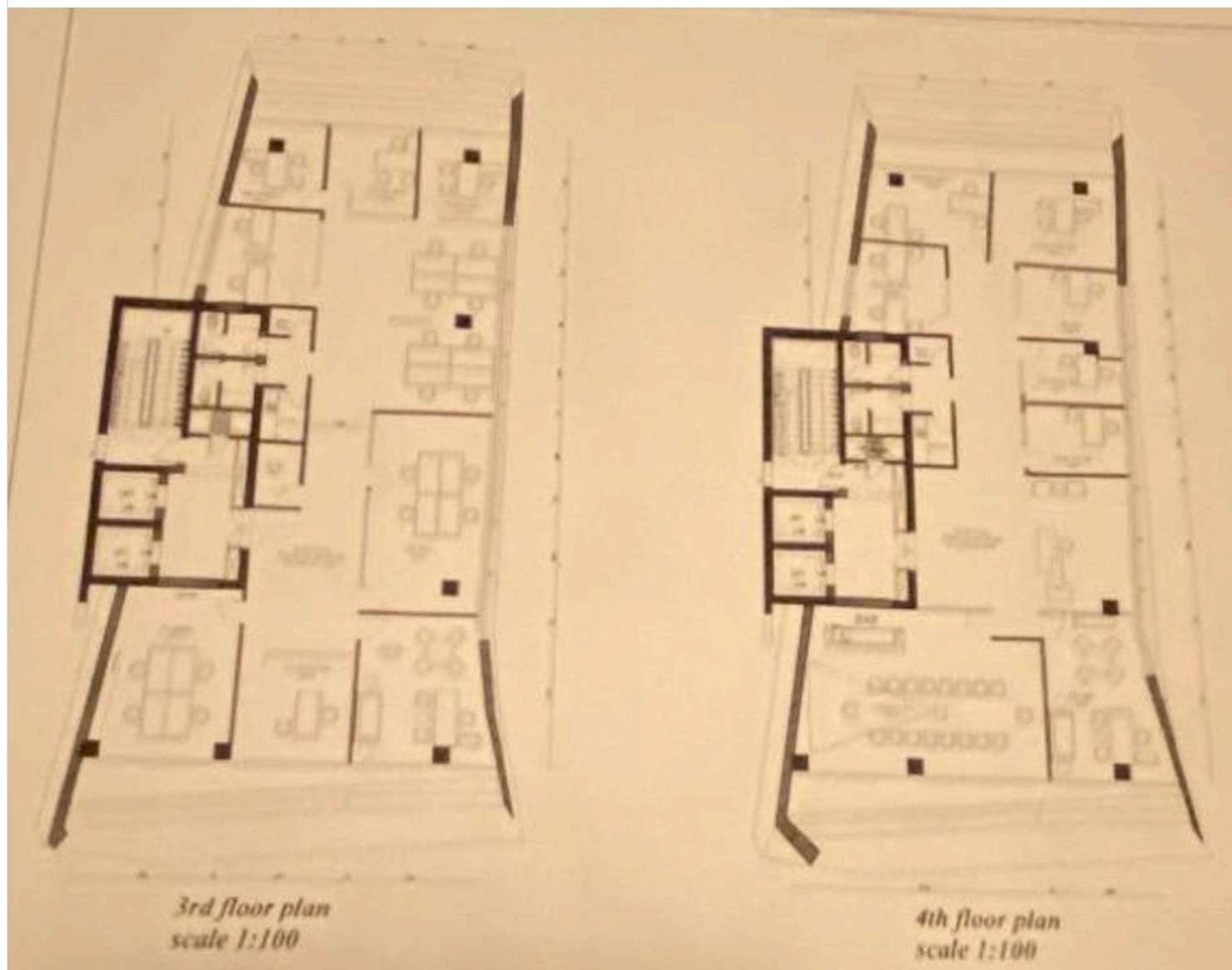
Description

Completed office in a central location in Limassol, Petrou & Pavlou Area.

*Location on the map is indicative.



| Floor plans



Additional information

Contact us



Vassilis Papadopoulos

☎ (+357) 99662023

✉ info@cyprusdomus.com

