

#2356

# New Modern Detached House In Episkopi

📍 Episkopi Lemesou, Limassol

**€284,000** +VAT





# Overview

## Specifications

Bedrooms



3

Bathrooms



2

Covered

130 m<sup>2</sup>

Type

House

Toilets

1

Plot

160 m<sup>2</sup>

Status

Under construction

## Description

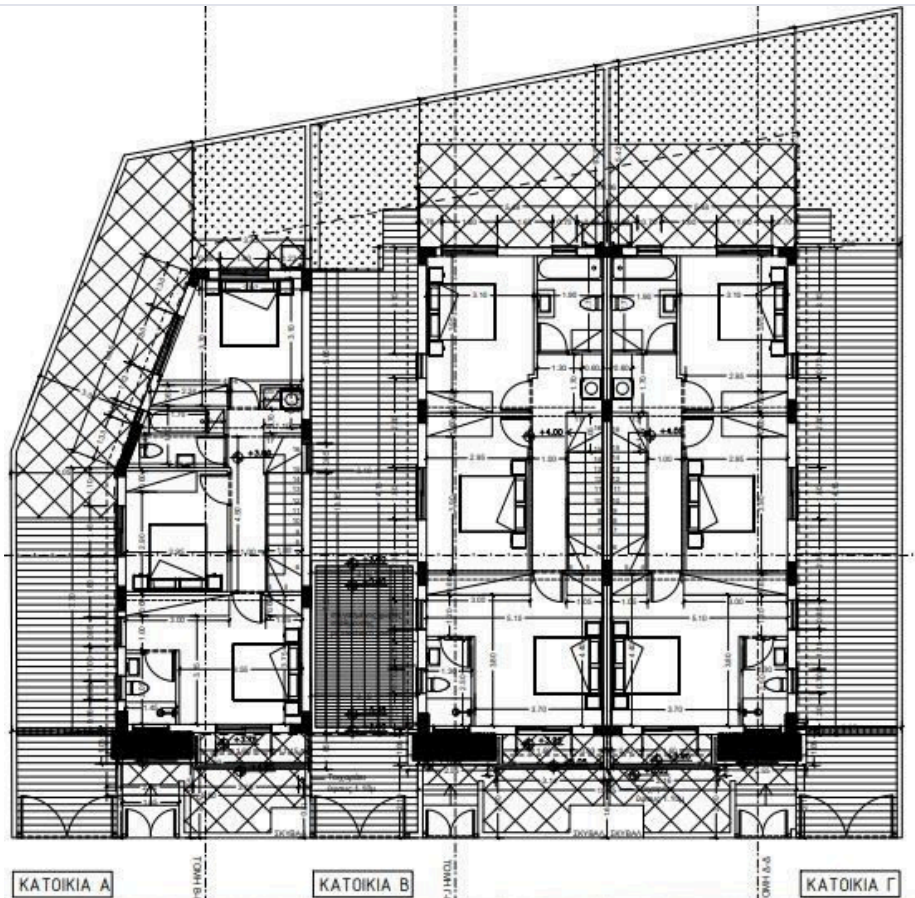
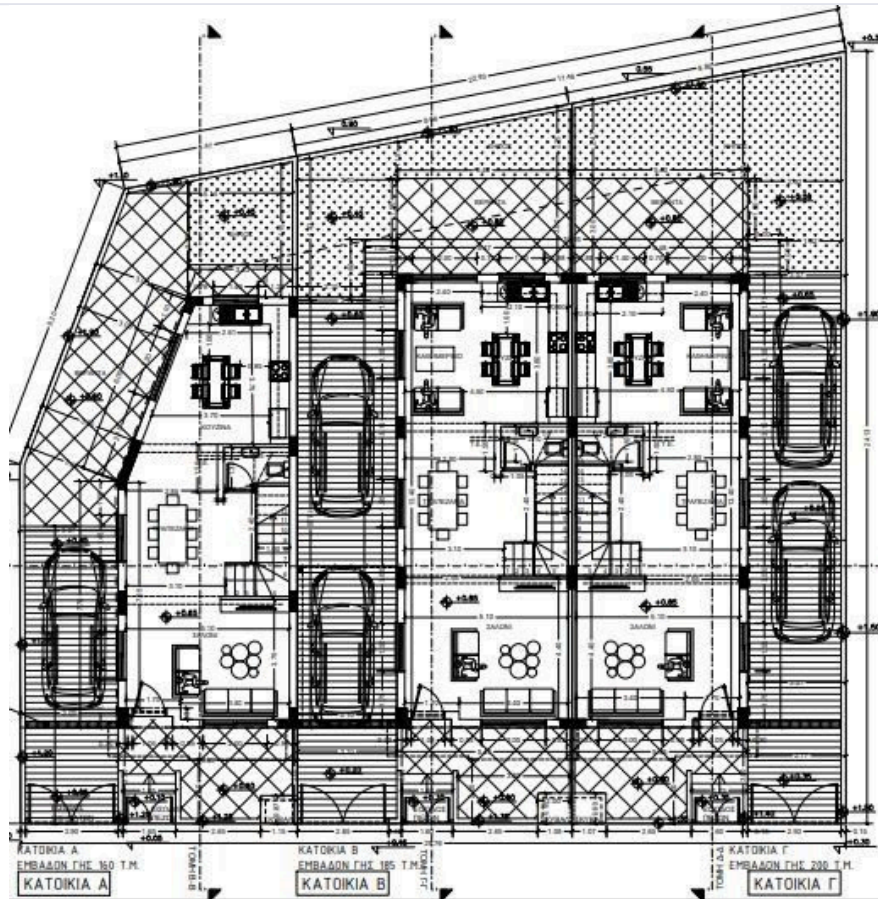
Merging modern design and quality, this new project of 3 houses is located in a peaceful area of Episkopi, just a short drive away from all that the cosmopolitan city of Limassol has to offer, with easy access to highway and close to all amenities.

Externally there is a garden, verandas and covered parking.

Quality materials, modern finishes, energy efficiency and much more are the main assets of this project.

\*Location on the map is indicative.

# Floor plans





# Additional information

## Facilities

Aircondition, Provision

Solar photovoltaic panels

Solar water heater

## Features

Cul de sac

Double glazing

Easy access to highway

En suite bathroom

Fitted wardrobes

Garden

Guest WC

Modern design

Near amenities

Next to green area

Pressurized water system

Quiet area

Thermal insulation

Veranda

## Contact us



**Vassilis Papadopoulos**

 (+357) 99662023

 [info@cyprusdomus.com](mailto:info@cyprusdomus.com)