

#2395

New Luxury Penthouse with Sea View In Germasogeia

 Germasogeia, Limassol

€790,000





Overview

Specifications

Bedrooms



3

Bathrooms



2

Covered

120 m²

Type

Apartment

Toilets

1

Status

Under construction

Year of construction

2022

Description

The Project is a premium apartment development located in Germasogeia, a popular suburb of Limassol.

It comprises two independent 4-storey buildings with ample off-road parking and communal facilities that include a swimming pool play area, and landscaped grounds.

Privacy and security features are integrated into the overall design concept.

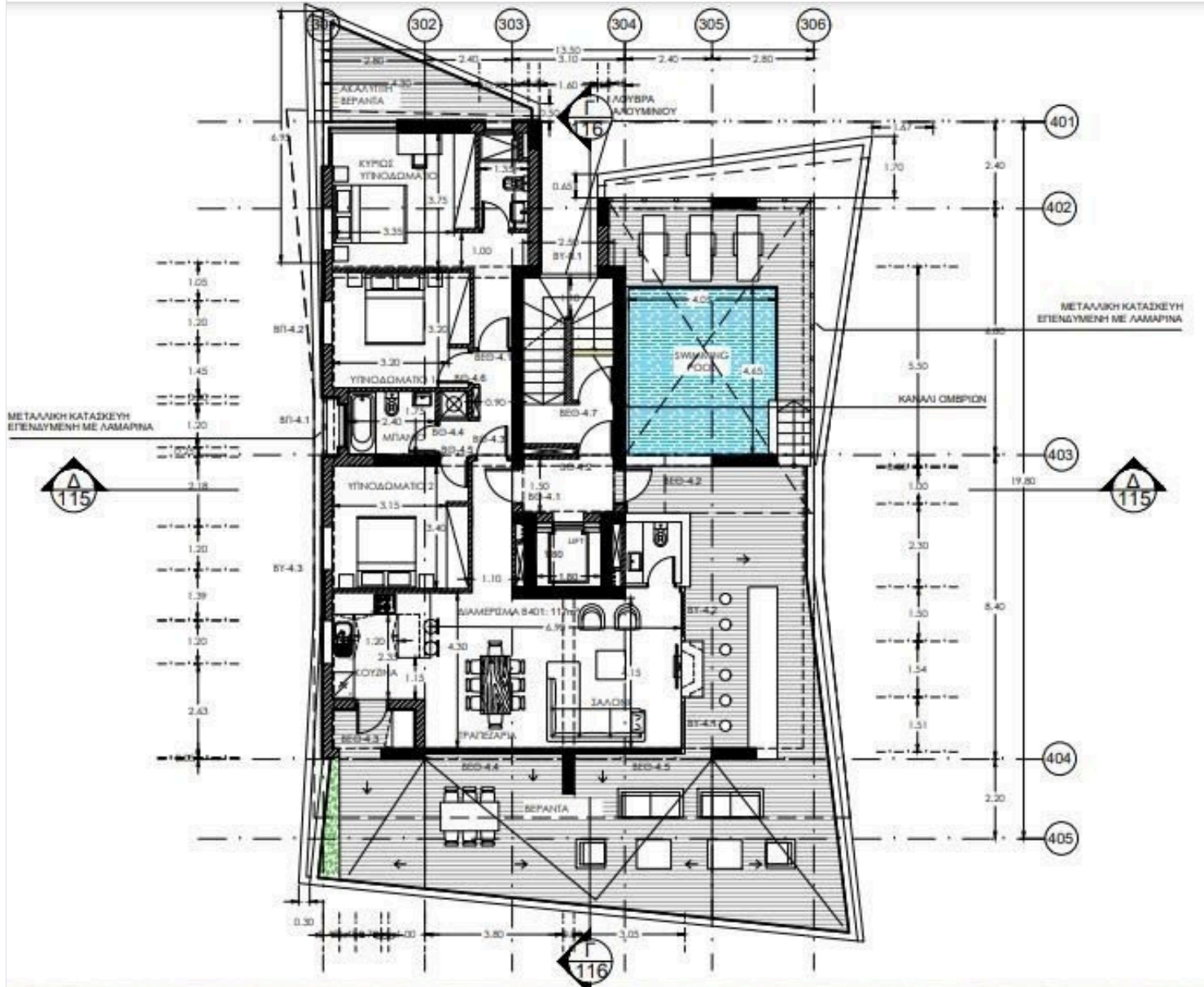
The fourth level apartments are either two- or three-bedroom, with private roof garden and outdoor Jacuzzi.

Ground-level outdoor features are a communal swimming pool, garden areas and parking spaces.

*Location on the map is indicative.



Floor plans



Additional information

Facilities

Aircondition, Provision

Parking, Covered

Storage

Heating, Provision

Pool, Private

Landscaped garden

Solar water heater

Features

Double glazing

Jacuzzi

En suite bathroom

Mountain view

Indoor fireplace

Sea view

Contact us



Vassilis Papadopoulos

☎ (+357) 99662023

✉ info@cyprusdomus.com

