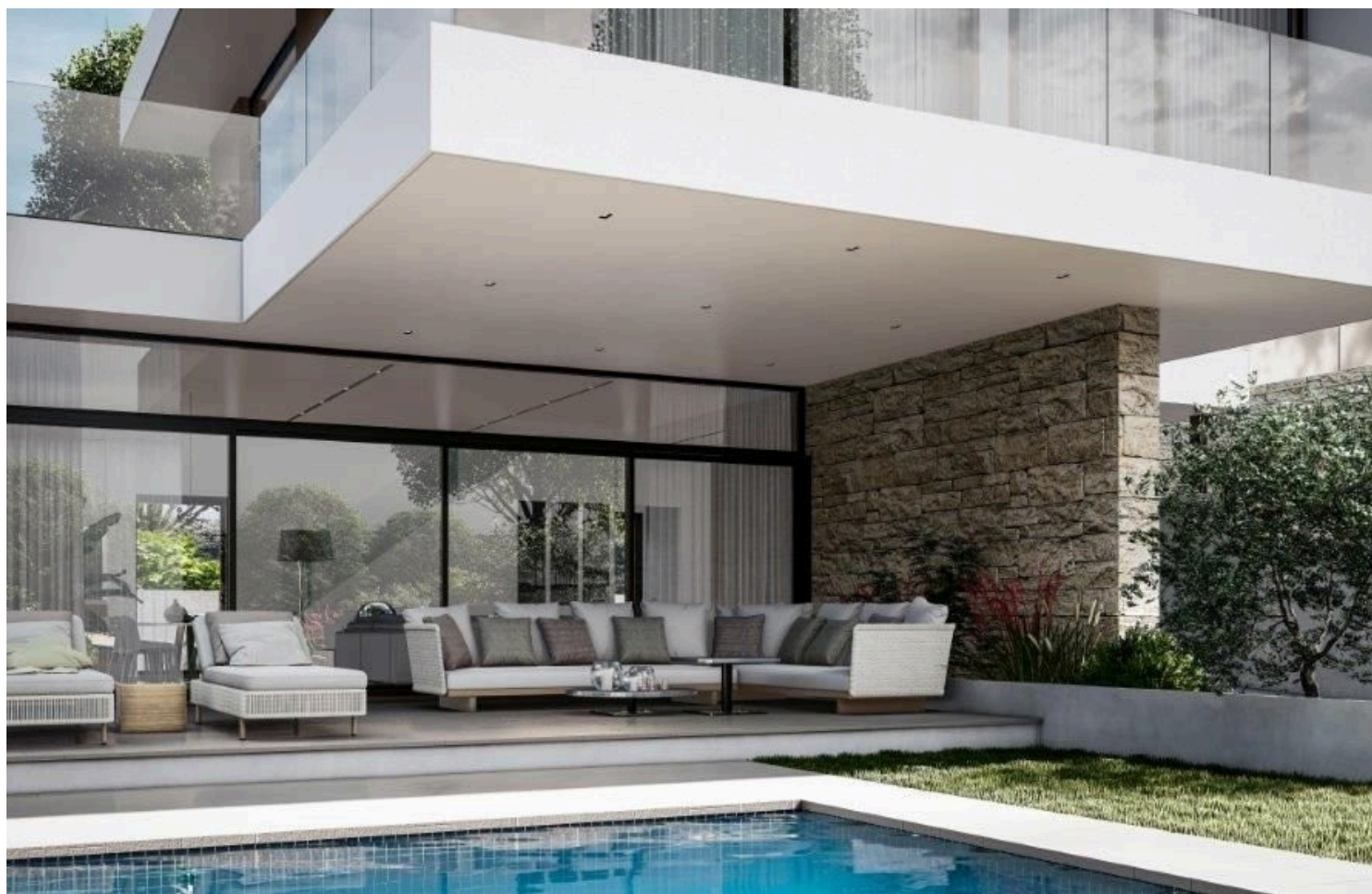


#2506

New Luxury Houses At Moni Area

 Moni, Limassol

€640,000 +VAT





Overview

Specifications

Bedrooms



3

Bathrooms



2

Covered



214 m²

Type

House

Toilets

1

Plot

513 m²

Status

Off plan

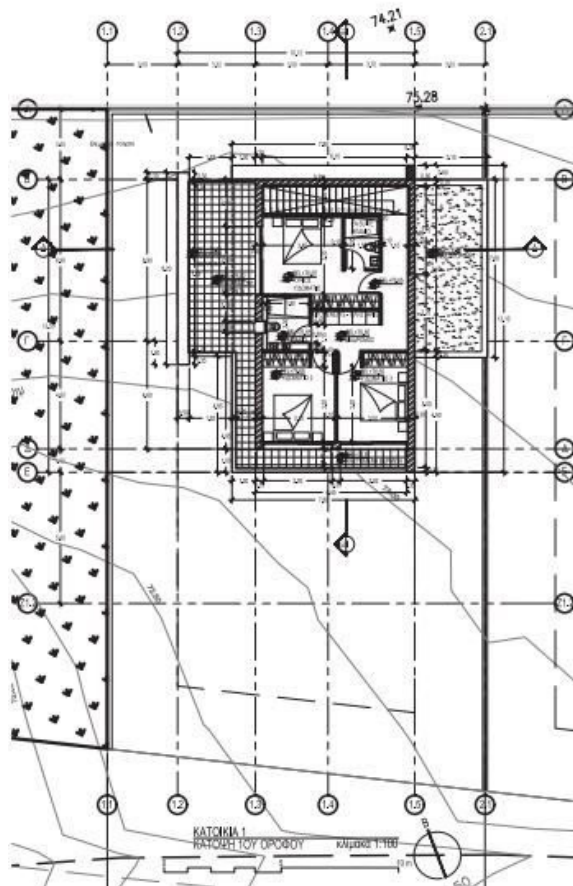
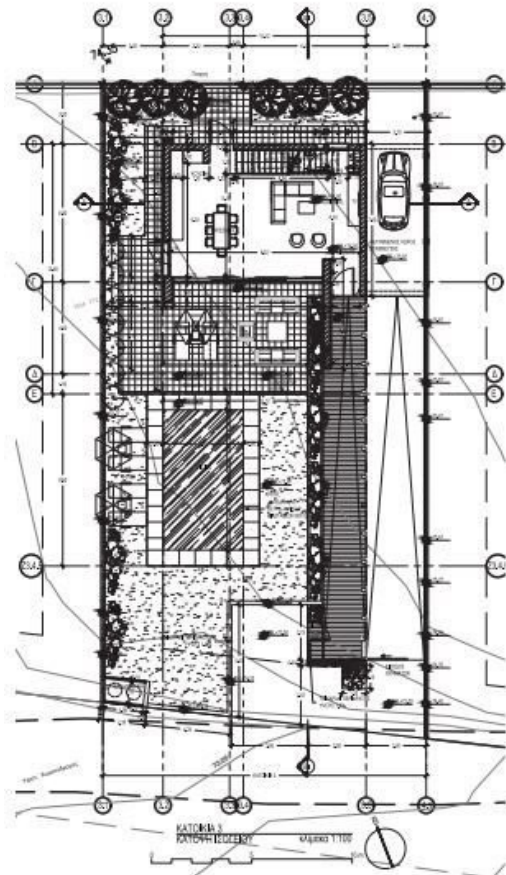
Description

The contemporary yet classy and luxury design style of the Residences, integrates the sophisticated art style that define an exquisite way of life.

The quick access to the motorway and sea front road of Limassol as well as the quiet and peaceful surroundings makes the project an ideal location for anyone.

*Location on the map is indicative.

Floor plans



Additional information

Facilities

Parking, Covered

Pool, Private

Features

En suite bathroom

Contact us



Vassilis Papadopoulos

📞 (+357) 99662023

✉️ info@cyprusdomus.com