

#2675

Contemporary Office Building In Katholiki Area

 Katholiki, Limassol

€5,725,000 +VAT





Overview

Specifications

Covered

 **1033 m²**

Type

Commercial Building

Status

Under construction

Description

The development consists of 1,100sqm of office space, including covered verandas, split across 6 floors plus 170sqm of retail space on ground and mezzanine floors.

In addition, there is 260 sqm of communal area and 340 sqm of parking area creating 19 covered parking spaces in total, split across basement and ground floor.

A unique product in Limassol's current offering, targeting a highly sought-after segment in the market of medium sized, newly built office units, currently suffering from low supply levels.

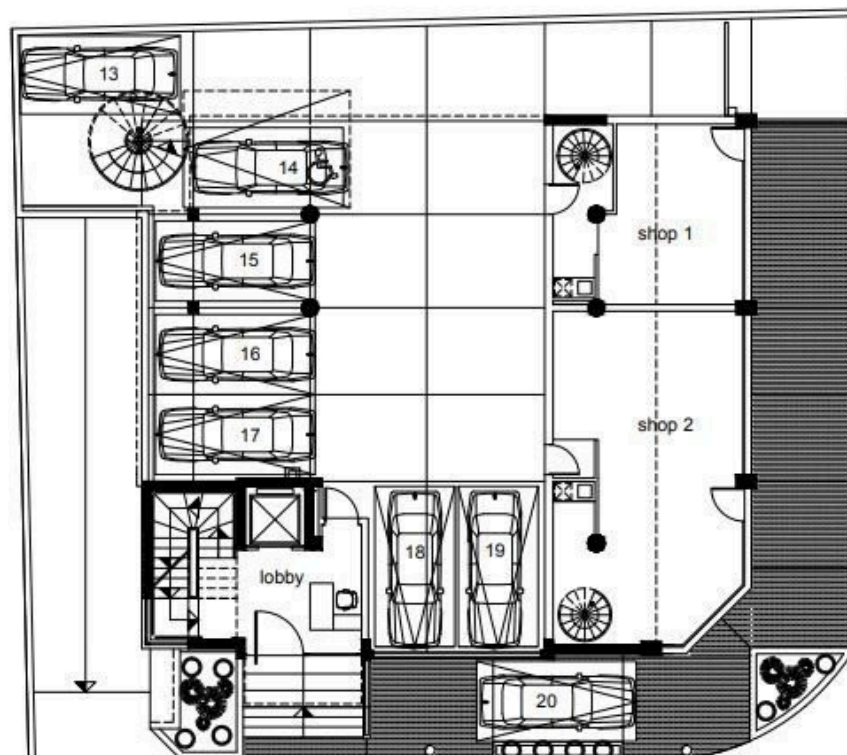
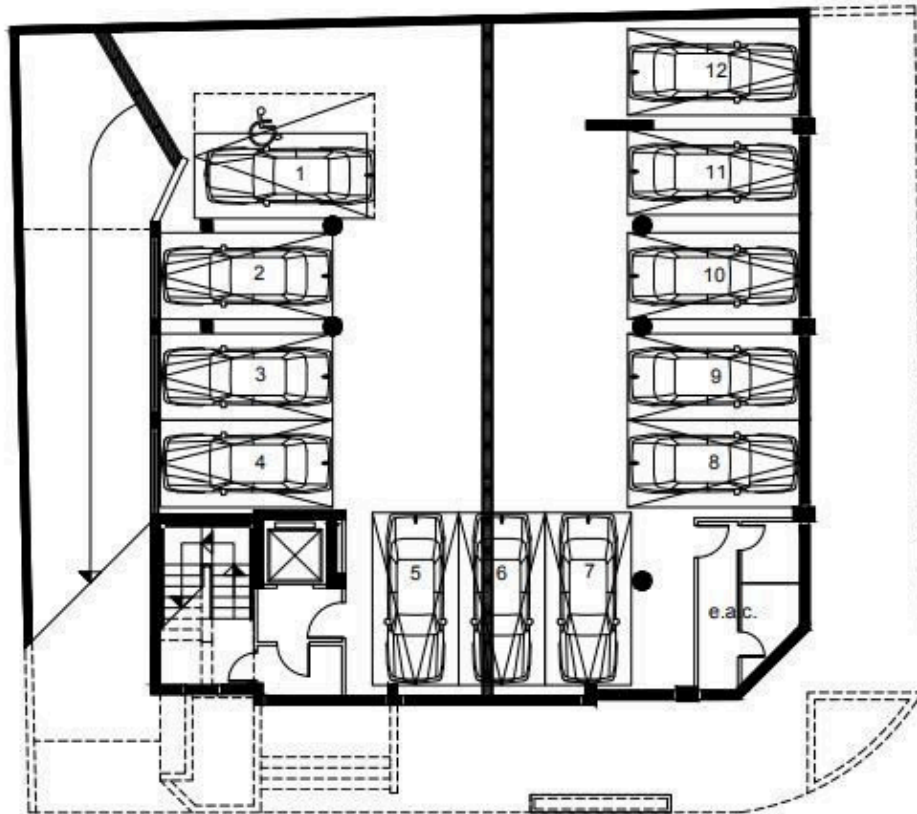
Modern infrastructure for low running costs.

Flexible internal layouts and arrangement.

*Location on the map is indicative.



Floor plans



Additional information

Contact us



Vassilis Papadopoulos

☎ (+357) 99662023

✉ info@cyprusdomus.com

