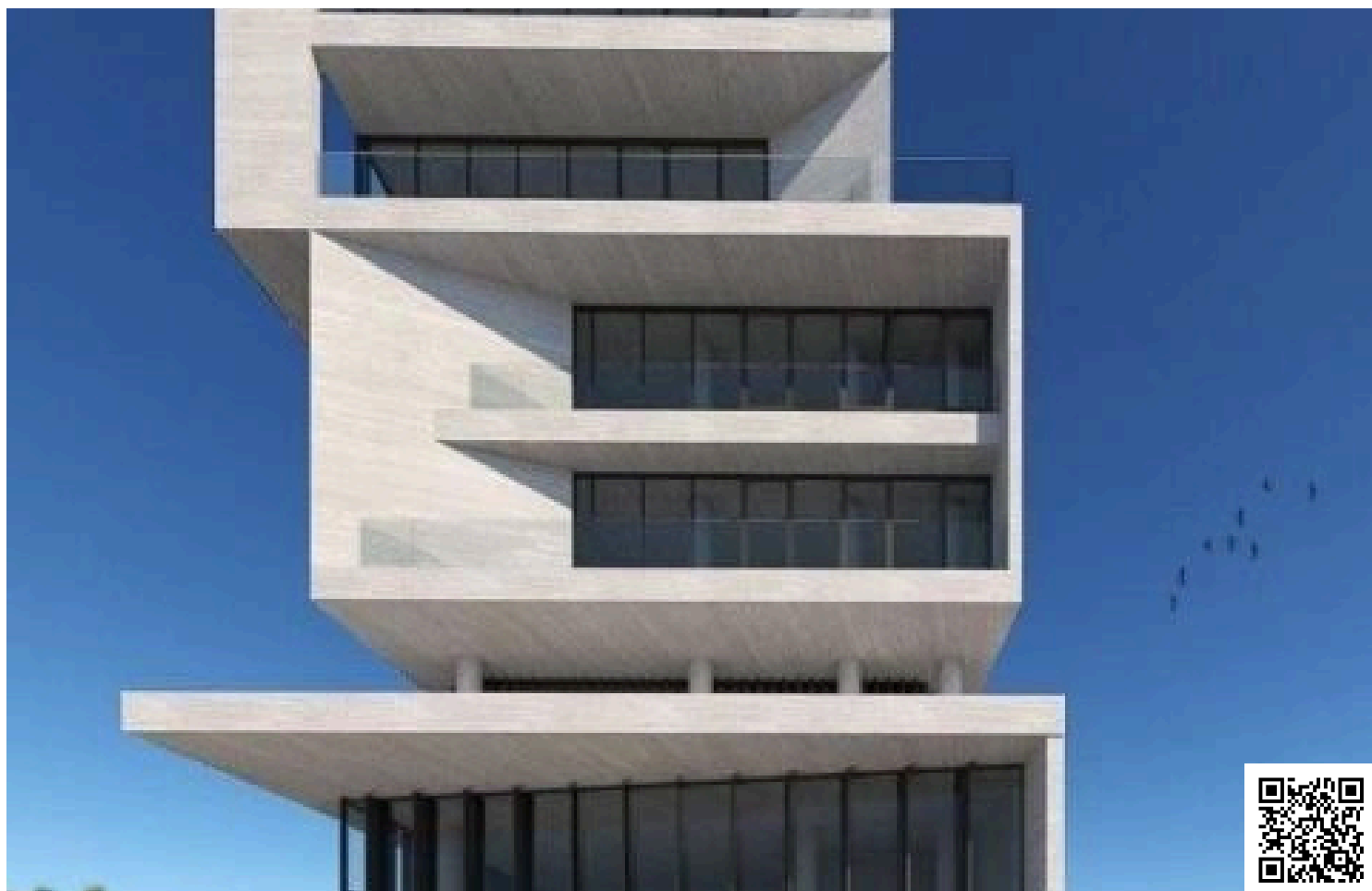


#2686

# New Ultra Modern Office In Petrou & Pavlou Area

 Petrou Kai Pavlou, Limassol

**€2,656,192** +VAT





# Overview

## Specifications

Covered

 **375 m<sup>2</sup>**

Type

**Office**

Status

**Off plan**

## Description

The exceptionally favorable location of this office building determines the success of the investment.

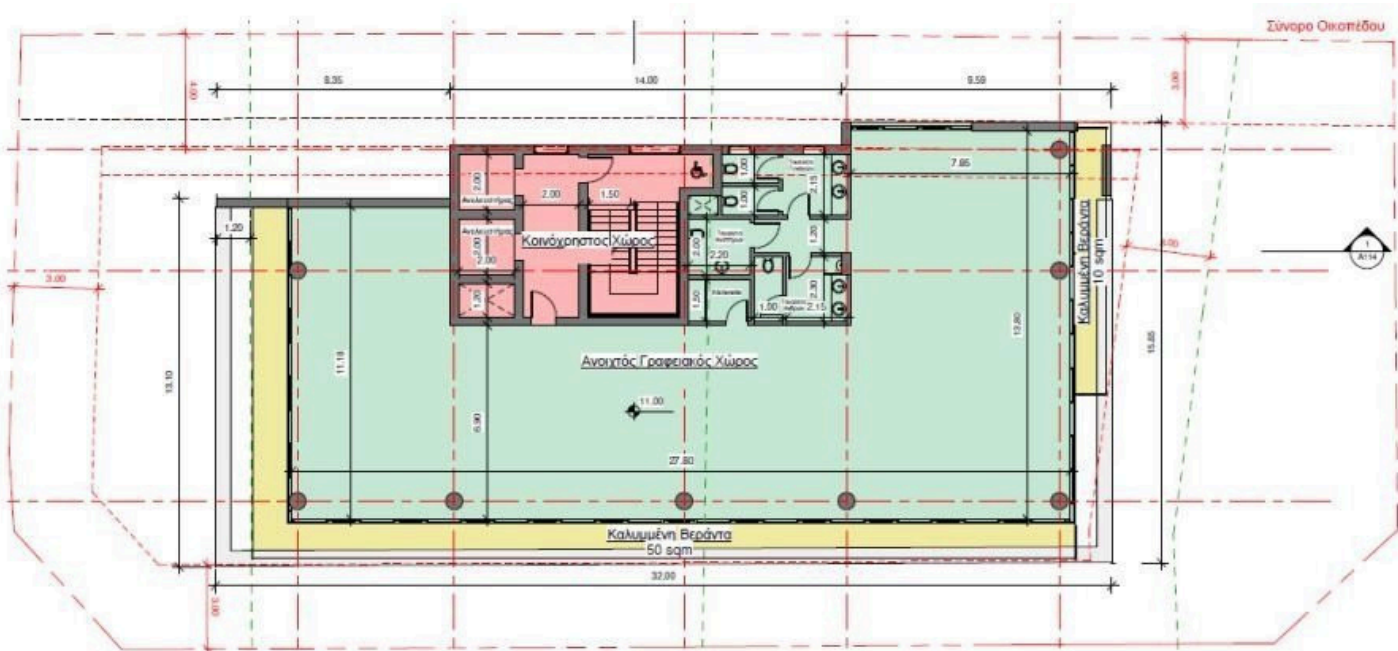
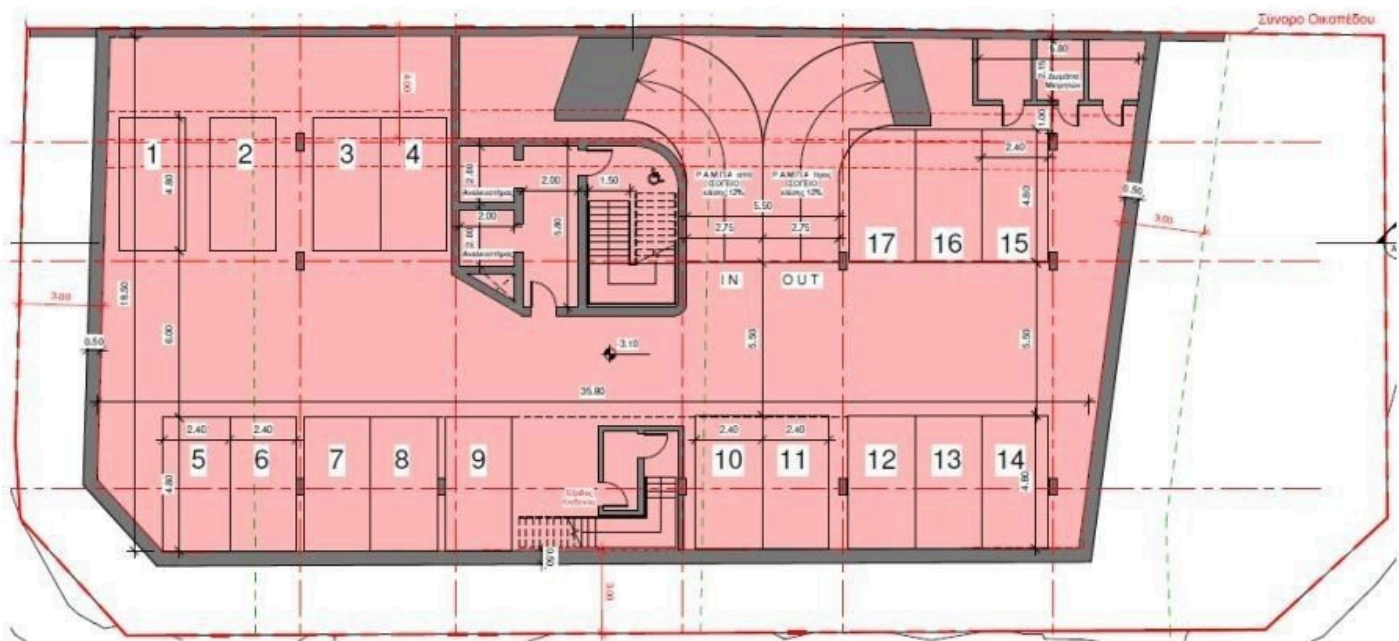
Its will be extremely easy to be find, as it is adjacent to two major traffic arteries, just in the heart of the business center of Limassol, on equidistant from the tourist and historical parts and only 5 minutes drive from the highway leading to one of the two international airports of Cyprus.

The building is designed to achieve the maximum amount of effective commercial property.

\*Location on the map is indicative.



# Floor plans



# Additional information

## Facilities

Aircondition, Central system

## Features

Alarm system

Fire detector

Reception

## Contact us



**Vassilis Papadopoulos**

📞 (+357) 99662023

✉️ [info@cyprusdomus.com](mailto:info@cyprusdomus.com)

