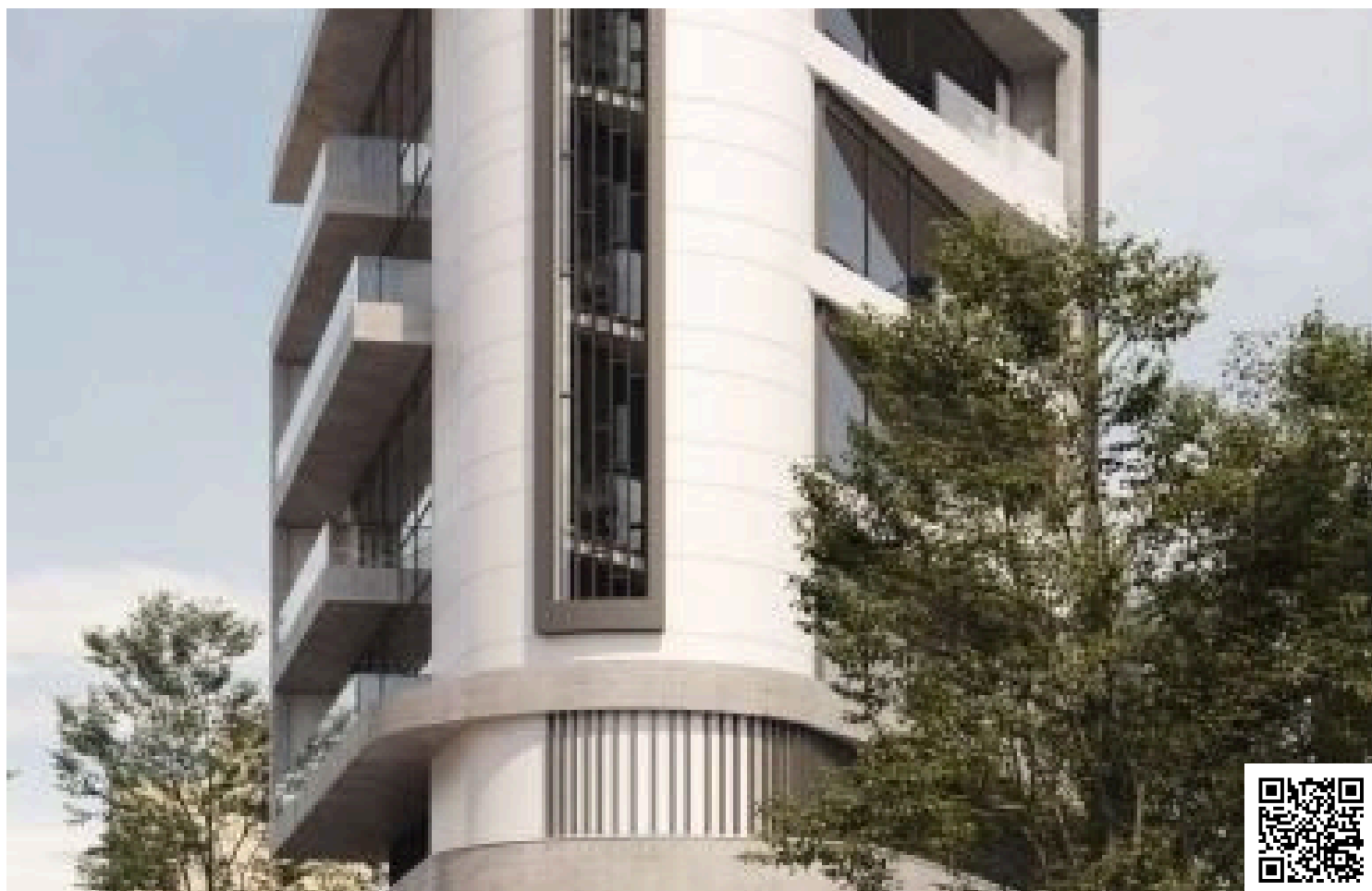


#2798

# New Modern Office Building In Mesa Geitonia Area

 Mesa Geitonia, Limassol

**€10,200,000** +VAT






# Overview

## Specifications

Covered

 **1744 m<sup>2</sup>**

Type	<b>Commercial Building</b>	Status	<b>Off plan</b>
Plot	<b>550 m<sup>2</sup></b>	Energy efficiency rating	 <b>B</b>

## Description

The area is at the peak of cosmopolitan society and it's a ceremony of dignity and delight, with luxury boutiques, cafés, law firms and banks.

The building is designed to achieve the maximum amount of effective commercial property, for rent.

A 9 storey commercial tower in the heart of Limassol , in one of the most commercial cosmopolitan areas in the city.

With 5 open plan luxury offices, one on each floor, ? 2 levels retail shop/showroom with mezzanine, mechanical floor and roof garden.

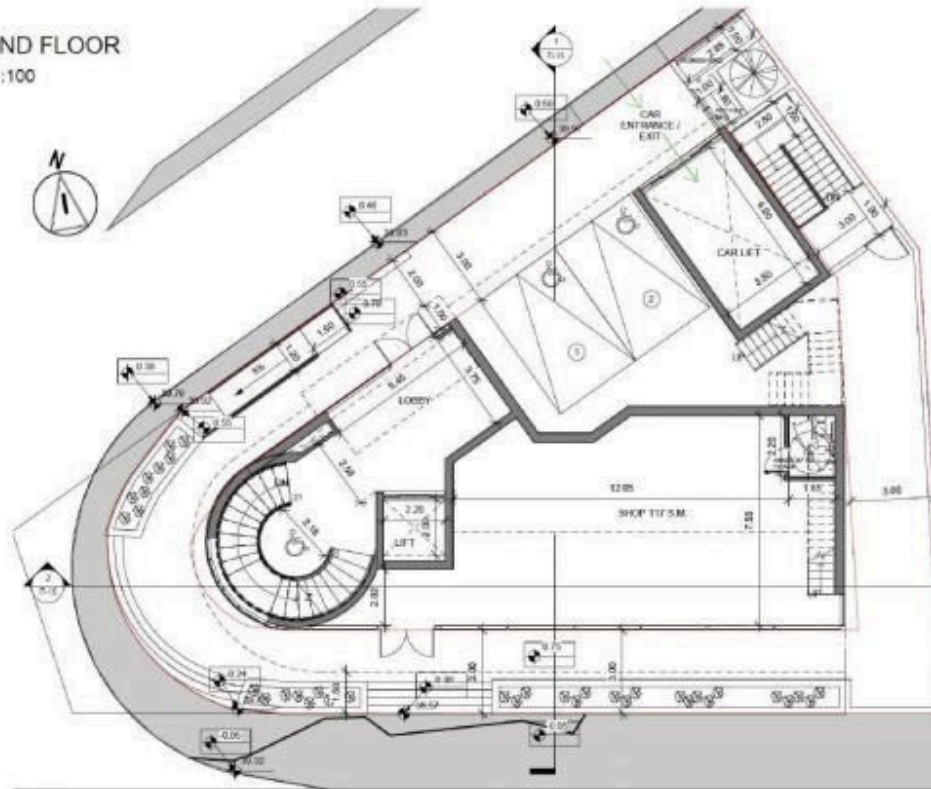
Buildings includes level of underground parking.

\*Location on the map is indicative.

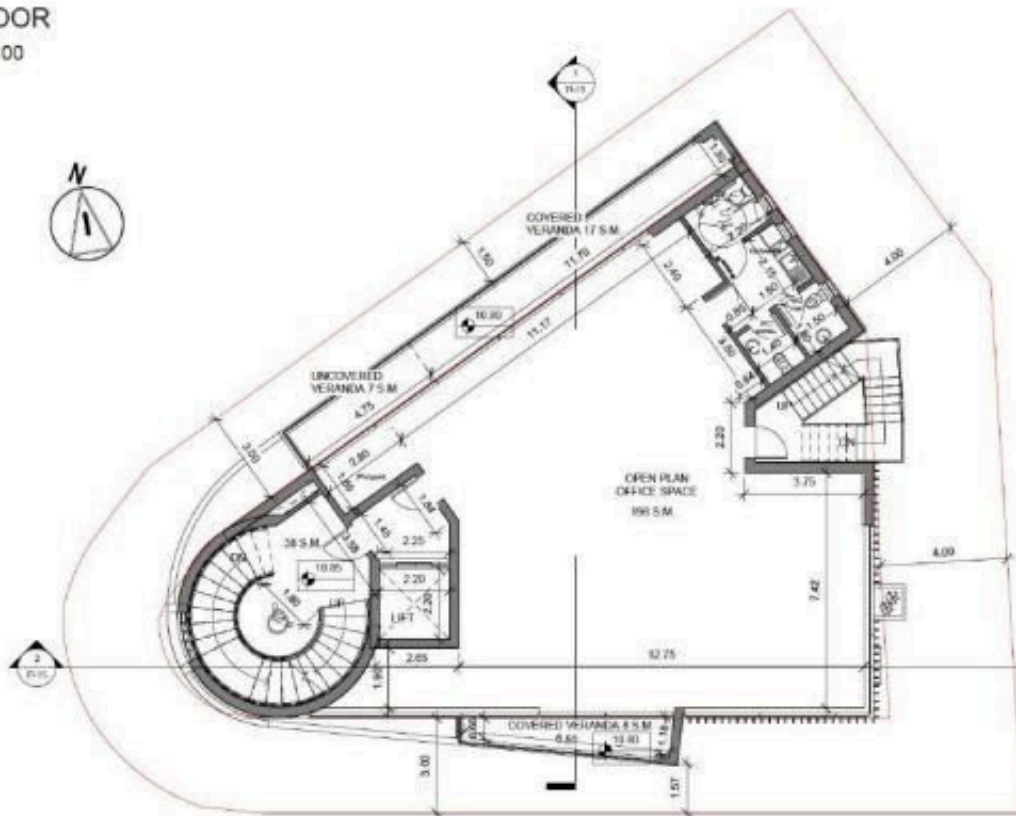


# Floor plans

GROUND FLOOR  
SCALE 1:100



1ST FLOOR  
SCALE 1:100



# Additional information

## Facilities

Parking, Underground


## Features

Raised floors

## Contact us



**Vassilis Papadopoulos**

 (+357) 99662023

 [info@cyprusdomus.com](mailto:info@cyprusdomus.com)

