

#2829

Office In Germasogeia Area

 Germasogeia, Limassol

€7,000 /month





Overview

Specifications

Covered

 270 m²

Type	Office	Status	Used
------	--------	--------	------

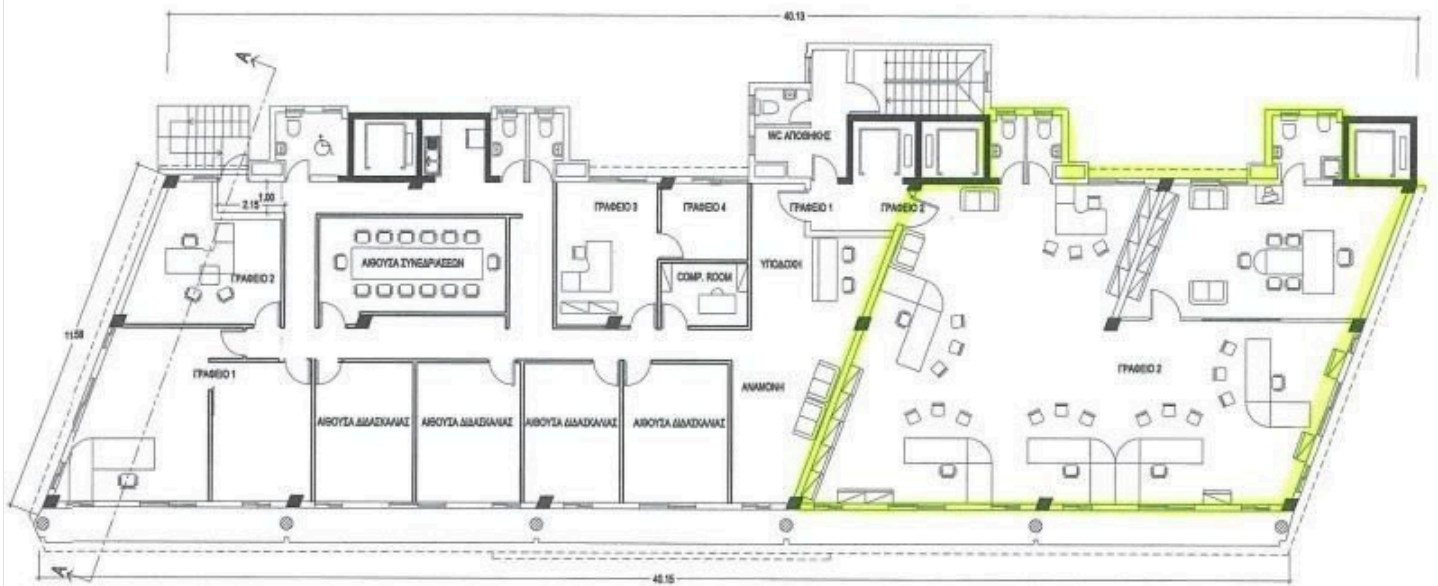
Description

Commercial Building in one of the busiest Avenues in Limassol with easy access to the city and high way, unique design, great for companies that want to showcase their products.

*Featured Office No.1

*Location on the map is indicative.

Floor plans



Additional information

Contact us



Vassilis Papadopoulos

☎ (+357) 99662023

✉ info@cyprusdomus.com

