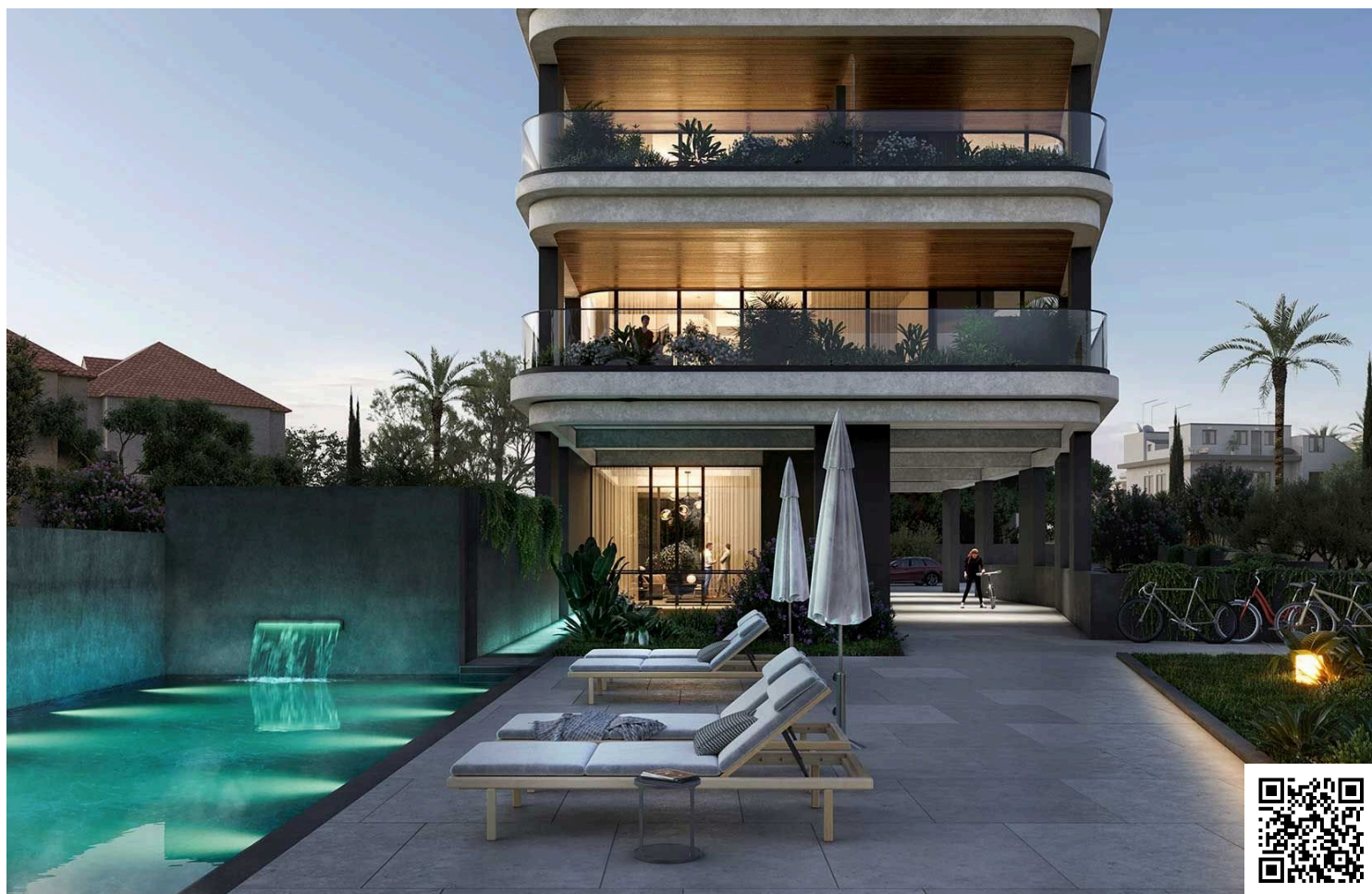


#2980

# New Luxury Apartments In Parekklisia Area

 Parekklisia, Limassol

**€7,270,000** +VAT







# Overview

## Specifications

Bedrooms



4

Bathrooms



4

Covered

311.5 m<sup>2</sup>

Type

**Apartment**

Status

**Under construction**

Energy efficiency rating



## Description

An astonishing modern complex with breathtaking views of the Mediterranean sea.

Created to enjoy genuine seafront living at its best.

The Project is a work of outstanding artistry and design by a leading London Architect.

Offering iconic residential and luxury with 5-star services.

Each apartment will have two parking spaces, a storage room, and a maid's room.

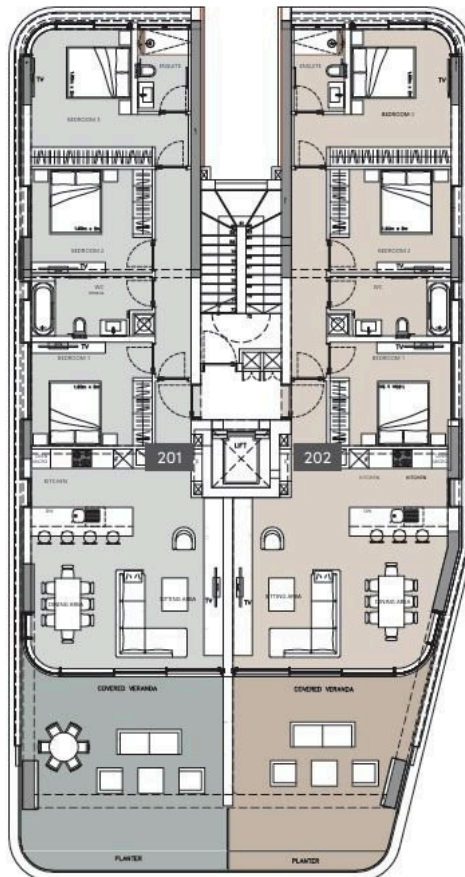
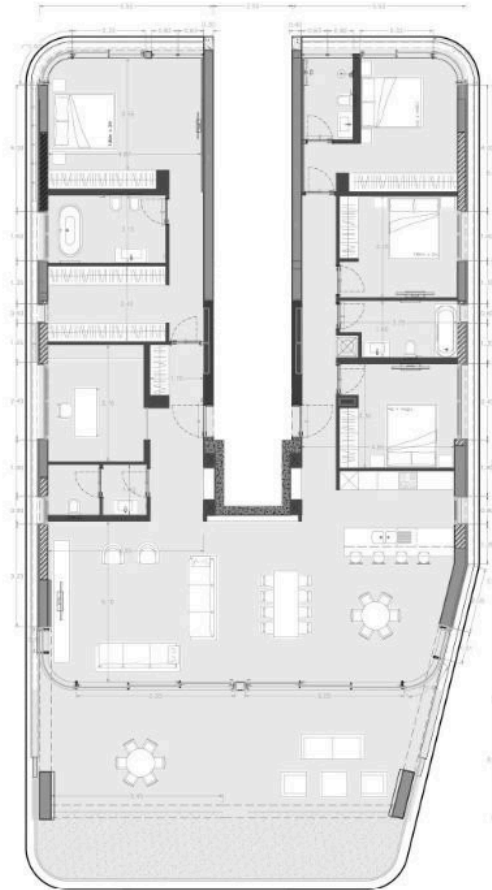
The indoor facilities include communal swimming pool, gym and sauna.

\*Location on the map is indicative.





# Floor plans



# Additional information

## Facilities

Aircondition, Central system

Maid's room

Sauna

Gym

Parking, Covered

Storage

Heating, Underfloor

Pool, Communal

## Features

Double glazing

Thermal insulation

En suite bathroom

High ceilings

## Contact us



**Vassilis Papadopoulos**

☎ (+357) 99662023

✉ [info@cyprusdomus.com](mailto:info@cyprusdomus.com)

