

#3155

New Contemporary Penthouse In Kato Polemidia Area

📍 Kato Polemidia, Limassol

€245,000 +VAT





Overview

Specifications

Bedrooms

 2

Bathrooms

 2

Covered

 74 m²

Type

Apartment

Status

Off plan

Year of construction

2023

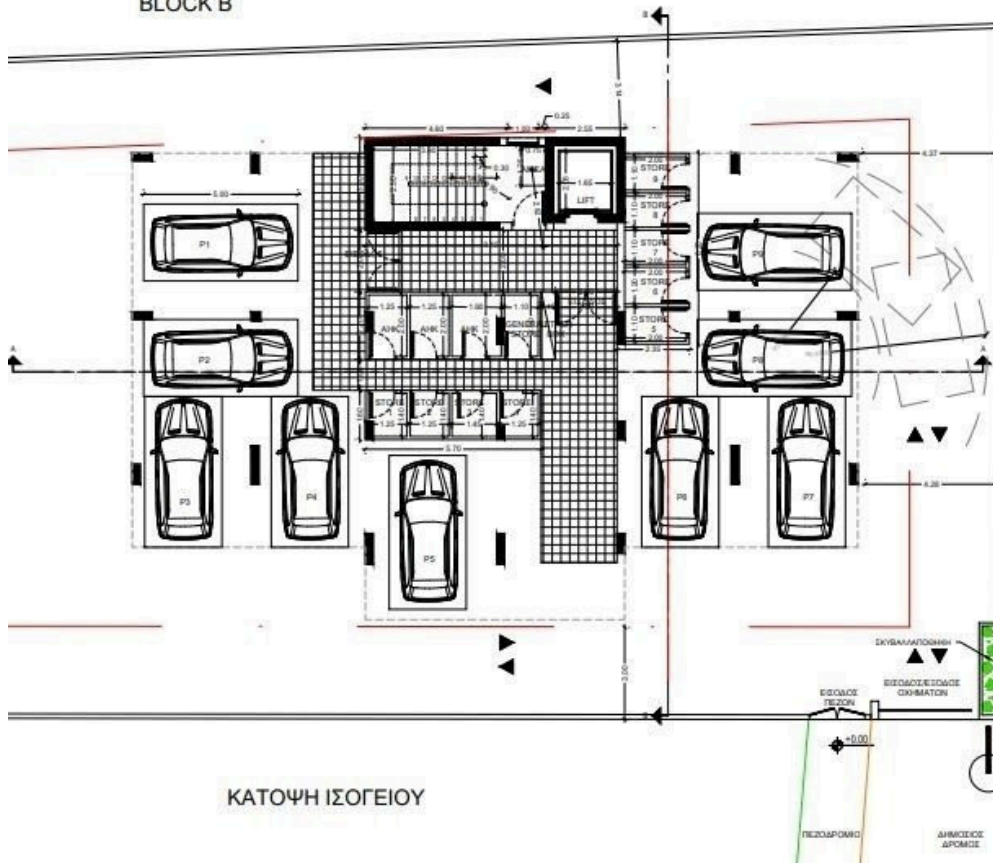
Description

The apartment consists of an open kitchen, dining and living area, 2 bedrooms and 2 bathrooms (1 en-suite).

*Location on the map is indicative.

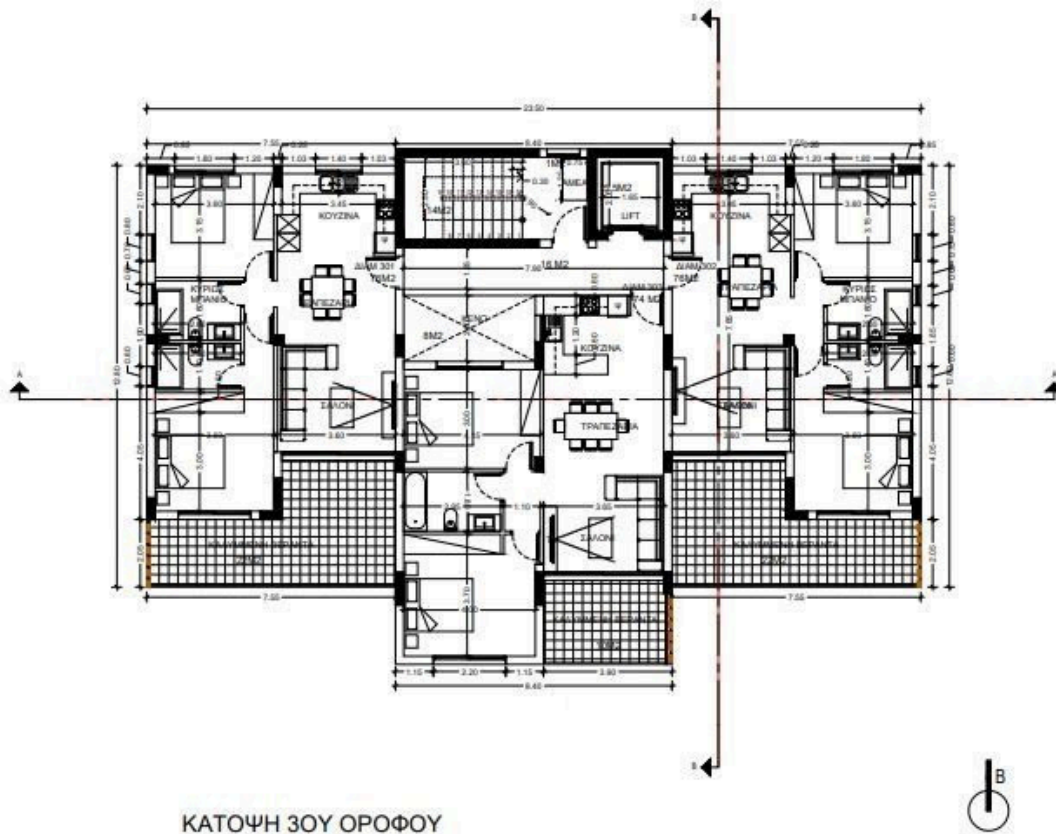
Floor plans

BLOCK B



ΚΑΤΟΨΗ ΙΣΟΓΕΙΟΥ

BLOCK B



ΚΑΤΟΨΗ 3ΟΥ ΟΡΟΦΟΥ

Additional information

Facilities

Aircondition, Provision

Heating, Provision

Parking, Covered

Storage

Features

Double glazing

En suite bathroom

Thermal insulation

Contact us



Vassilis Papadopoulos

📞 (+357) 99662023

📧 info@cyprusdomus.com