

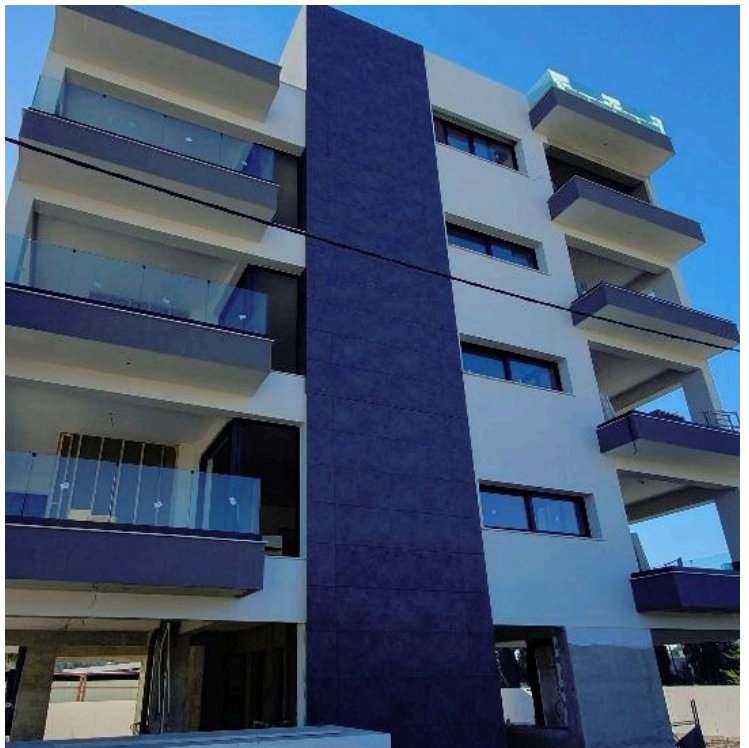
#3226

# New Whole Floor Modern Sea View Penthouse In Tsiflikoudia Area

 Tsiflikoudia, Limassol

**€700,000** +VAT





# Overview

## Specifications

Bedrooms		Bathrooms		Covered			
 3		 2		 130 m <sup>2</sup>			
Type	Apartment			Year of construction	2024		
Status	Completed			Energy efficiency rating	 A		

## Description

The Project comprises of two and three bedroom apartments.

It's an ideal investment for a family seeking a permanent residence on the outskirts of town, with easy and quick access to the motorway.

The top floor apartments enjoy a splendid view from their large verandas.

The apartments have large rooms, comfortable verandas and the building is located in a very quiet area.

In the surrounding area there are all the necessary amenities, such as parks and schools.

\*Location on the map is indicative.





# Additional information

## Facilities

Aircondition, Split system

Heating, Underfloor

Parking, Covered

Storage

## Features

Barbeque

CCTV

En suite bathroom

Jacuzzi

Smart home automation

## Contact us



**Vassilis Papadopoulos**

☎ (+357) 99662023

✉ [info@cyprusdomus.com](mailto:info@cyprusdomus.com)

