

#3264

New Luxury Penthouse With Roof Garden At Panthea Area

 Panthea, Limassol

€430,000 +VAT





Overview

Specifications

Bedrooms	Bathrooms	Covered
 2	 2	 86 m ²
Type	Apartment	Year of construction
Status	Under construction	2024

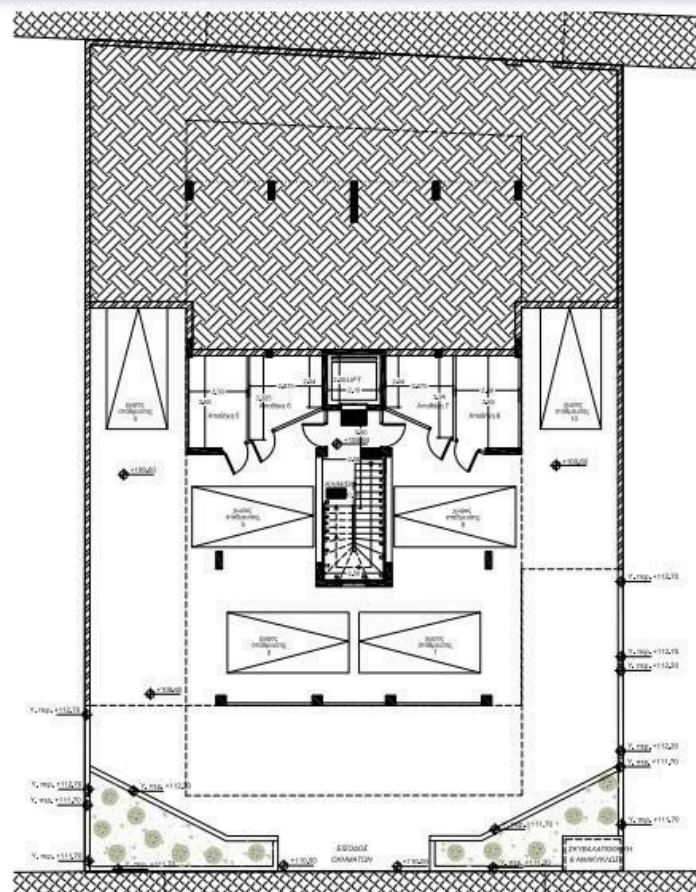
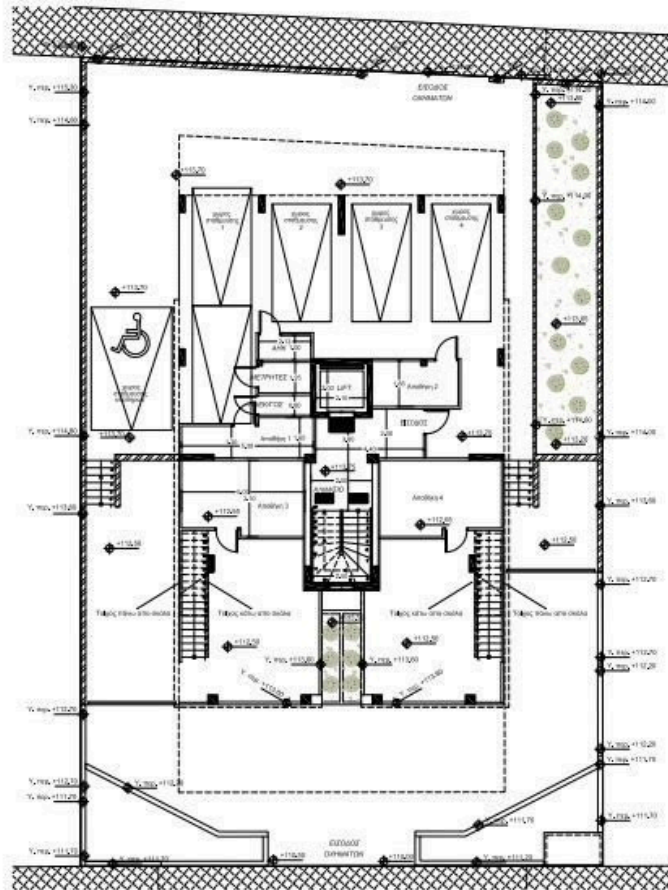
Description

The building is designed giving great emphasis in indoor comfort and functionality as well as big verandas from which its residence will be able to enjoy the spectacular city and sea view.

Each apartment has its own covered parking space and private store room, while the central entrance of the building will be controlled by a video intercom system.

*Location on the map is indicative.

Floor plans



Additional information

Facilities

Aircondition, Split system

Heating, Underfloor

Parking, Covered

Storage

Features

En suite bathroom

Roof garden

Contact us



Vassilis Papadopoulos

📞 (+357) 99662023

✉️ info@cyprusdomus.com