

#3417

New Unique Design House In Moni Area

 Moni, Limassol

€284,000 +VAT





Overview

Specifications

Bedrooms

 3

Bathrooms

 2

Covered

 92 m²

Type **House**

Toilets **1**

Plot **212 m²**

Status **Off plan**

Year of construction **2024**

Energy efficiency rating  **A**

Description

Each villa boasts a private garden, private parking, covered/uncovered terraces.

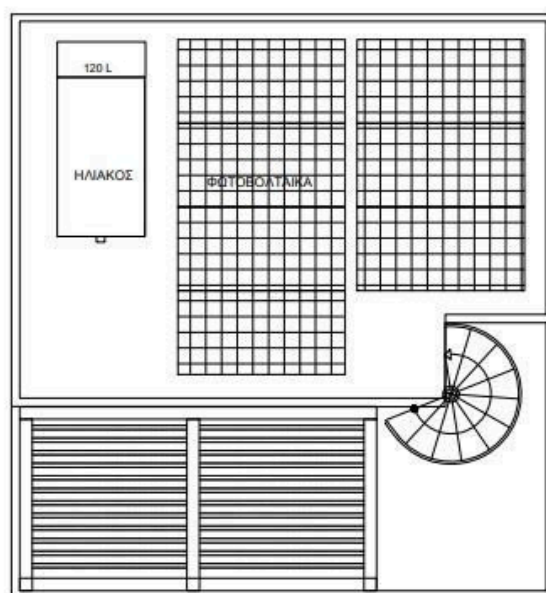
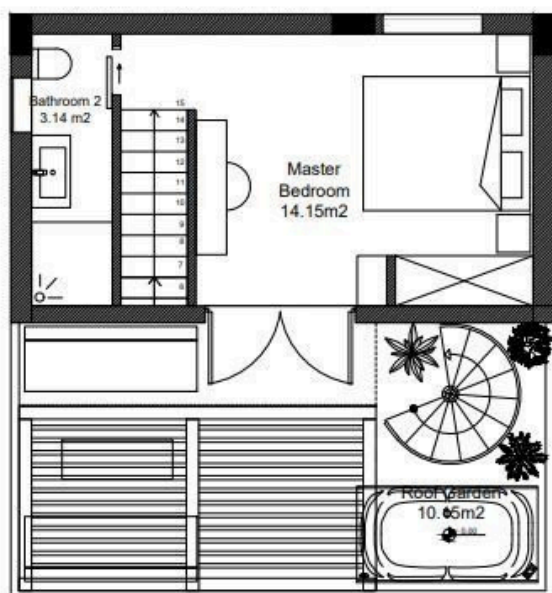
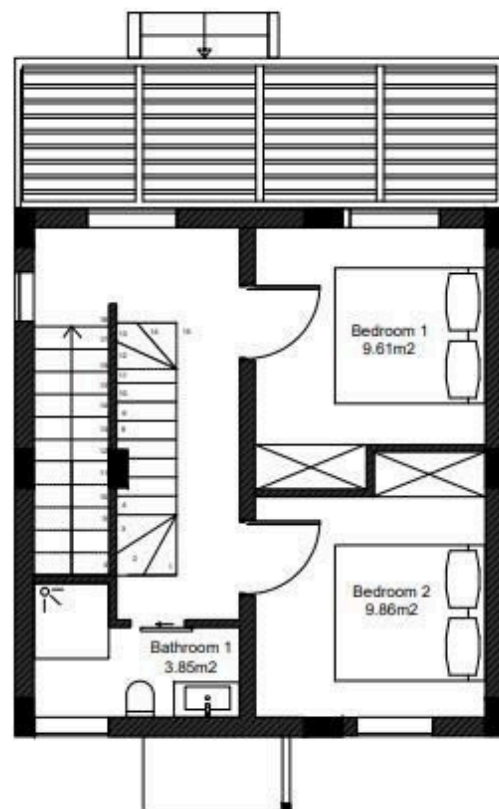
Residents benefit from the picturesque landscape.

The contemporary design, the privacy, and the surrounding nature make it the ideal place for you to create a lovely home away from the city hustle.

*Location on the map is indicative.



Floor plans



Additional information

Contact us



Vassilis Papadopoulos

☎ (+357) 99662023

✉ info@cyprusdomus.com

