

#3419

New Unique Design House In Moni Area

 Moni, Limassol




€315,000 +VAT





Overview

Specifications

Bedrooms		Bathrooms		Covered	
 3		 2		 92 m ²	
Type		House		Status	
Toilets		1		Year of construction	
Plot		352 m ²		Energy efficiency rating	
				Off plan	
				2024	
				 A	

Description

Each villa boasts a private garden, private parking, covered/uncovered terraces.

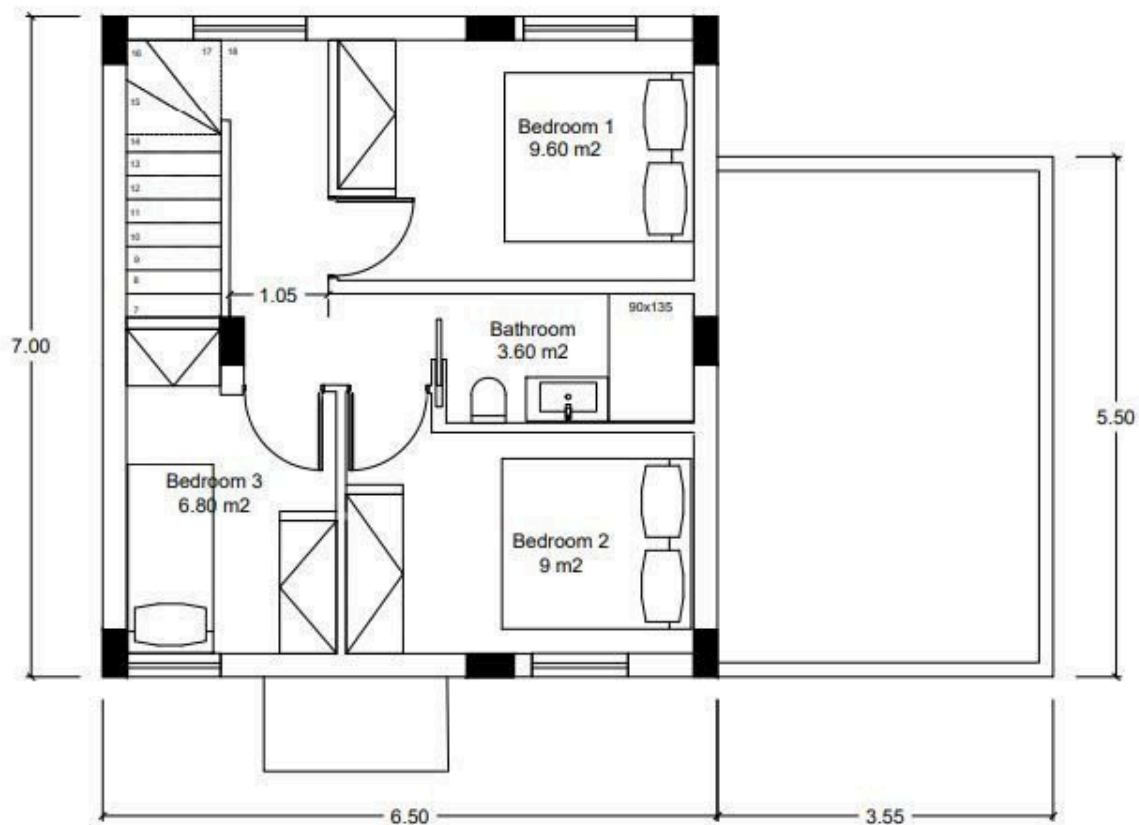
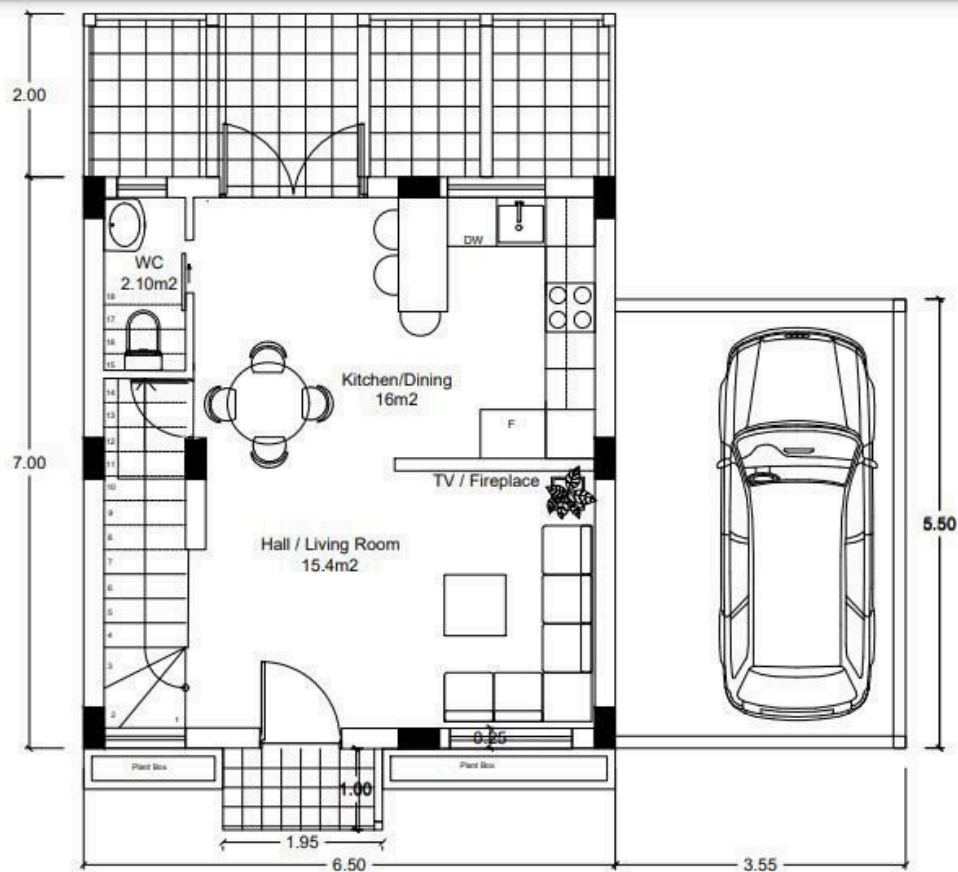
Residents benefit from the picturesque landscape.

The contemporary design, the privacy, and the surrounding nature make it the ideal place for you to create a lovely home away from the city hustle.

*Location on the map is indicative.



Floor plans



Additional information

Contact us



Vassilis Papadopoulos

☎ (+357) 99662023

✉ info@cyprusdomus.com

