

#3511

New Modern Apartments In Ypsonas Area

 Ypsonas, Limassol

€255,000 +VAT





Overview

Specifications

Bedrooms



Bathrooms



Covered



Type

Apartment

Status

Off plan

Description

The building is located in one of the most prestigious area of Limassol, Ypsonas, near all necessary amenities.

The proximity of the highway allows an easy connection with the city center, the seaside and the main cities of the island.

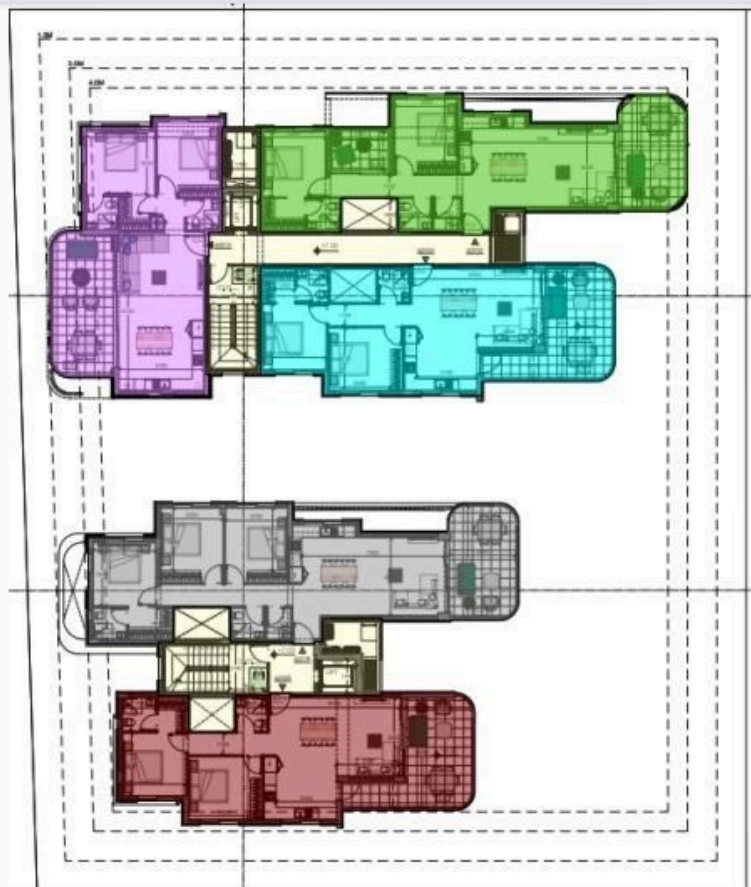
The project of two luxury block of apartments consisting of two and three bedroom apartments.

Each apartment has it's own storage room and parking space.

The building also provides an amazing pool and beautiful garden on the ground floor.

*Location on the map is indicative.

Floor plans



Additional information

Facilities

Parking, Covered

Pool, Communal

Storage

Features

En suite bathroom

Contact us



Vassilis Papadopoulos

📞 (+357) 99662023

✉️ info@cyprusdomus.com