

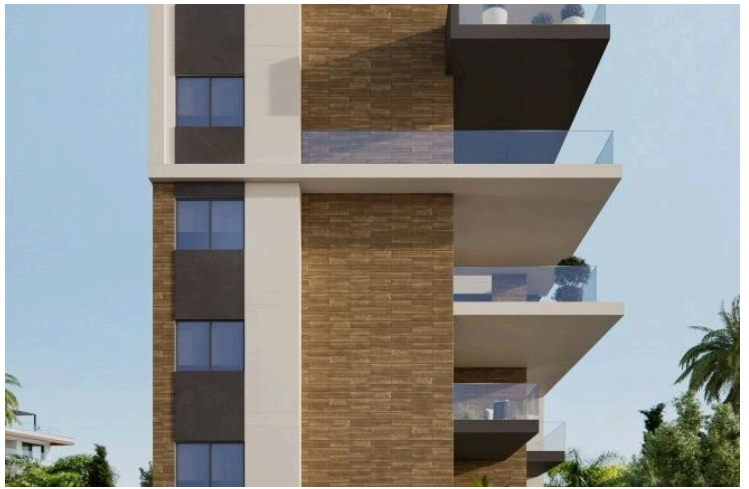
#3518

# New Contemporary Design Apartment In Germasogeia Area

📍 Germasogeia Tourist Area, Limassol

€800,000 +VAT





# Overview

## Specifications

Bedrooms



2

Bathrooms



2

Covered

110 m<sup>2</sup>

Type

**Apartment**

Covered veranda

**31 m<sup>2</sup>**

Status

**Under construction**

Energy efficiency rating



## Description

A contemporary residential project in Germasogeia tourist area of Limassol.

It is conveniently located within walking distance to all necessary city amenities, yet tucked away from the hustle and bustle of the seafront road.

The common facilities include a swimming pool, barbecue area, covered and uncovered parking areas, storage area, an electric vehicle charging point and green areas.

The complex benefits from secure gated entrance and video intercom entry system to all units.

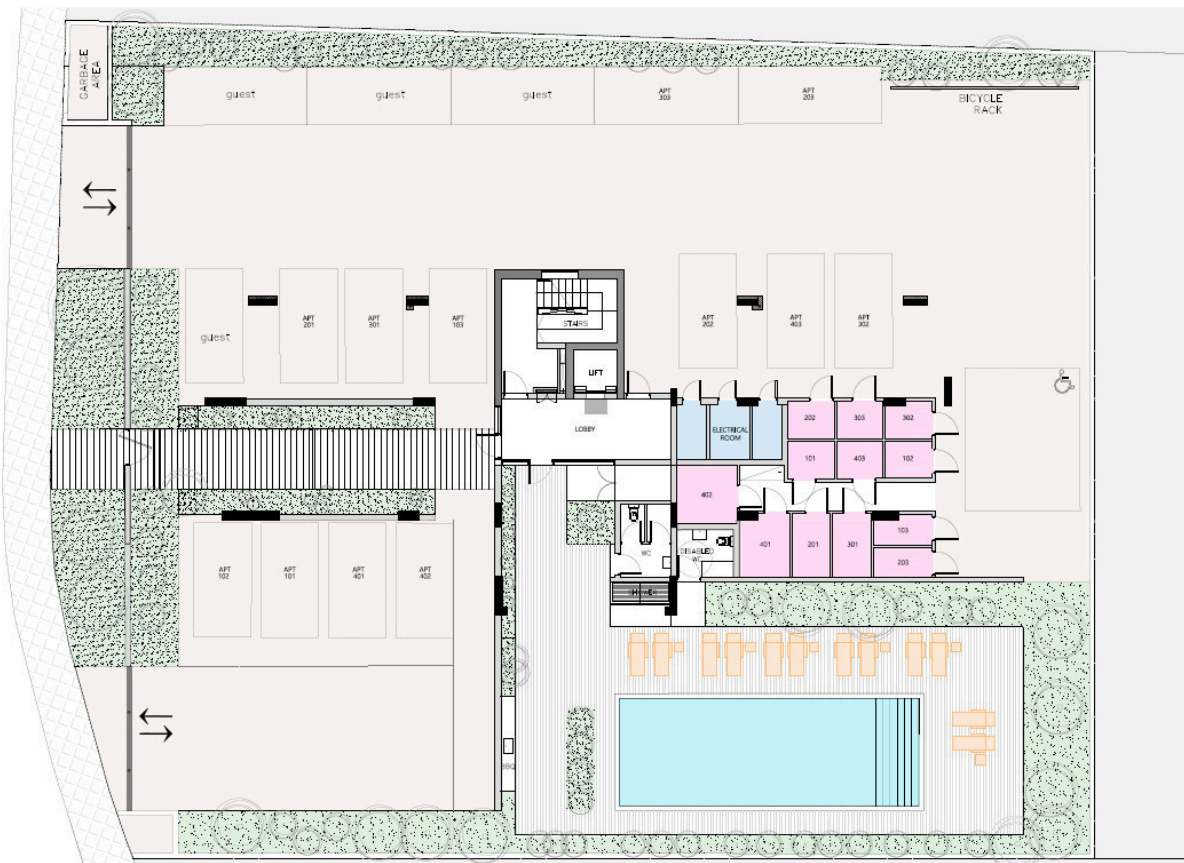
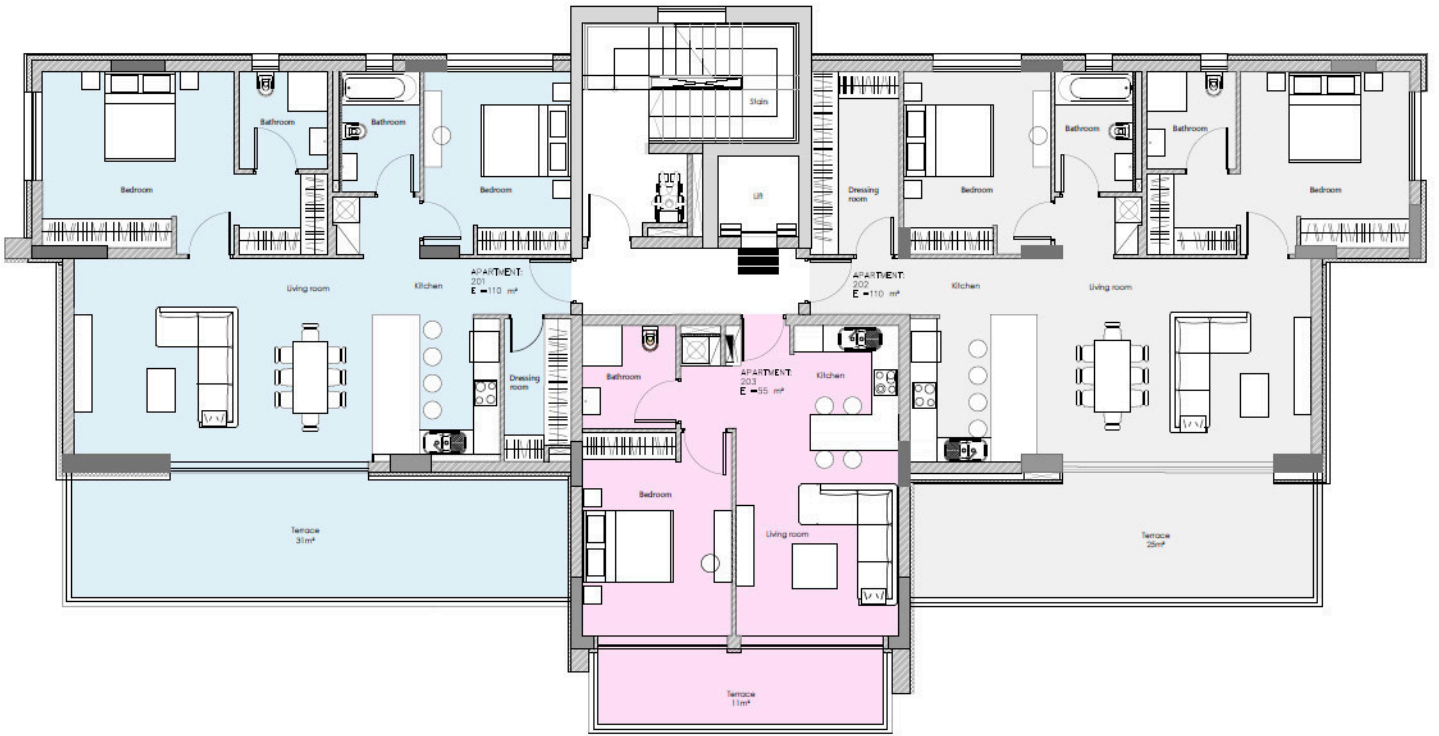
Each apartment has a storage room and a parking space, while the penthouses have 2 parking spaces.

The large verandas and rooftop terraces provide beautiful views to the mountains and the city.

\*Location on the map is indicative.



# Floor plans



N



# Additional information

## Facilities

Aircondition, Central system

Heating, Underfloor

Parking, Covered

Pool, Communal

Solar photovoltaic panels

Storage

## Features

Double glazing


High ceilings

Thermal insulation

## Contact us



**Vassilis Papadopoulos**

 (+357) 99662023

 [info@cyprusdomus.com](mailto:info@cyprusdomus.com)

