

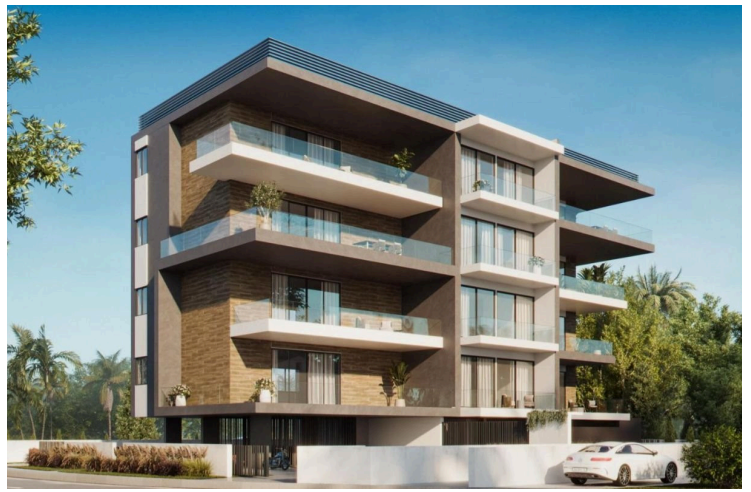
#3522

New Contemporary Design Penthouse In Germasogeia Area

📍 Germasogeia Tourist Area, Limassol

€920,000 +VAT





Overview

Specifications

Bedrooms

 2

Bathrooms

 2

Covered

 110 m²

Type

Apartment

Covered veranda

32 m²

Uncovered veranda

5 m²

Status

Under construction

Energy efficiency rating

 **A**

Description

A contemporary residential project in Germasogeia tourist area of Limassol.

It is conveniently located within walking distance to all necessary city amenities, yet tucked away from the hustle and bustle of the seafront road.

The common facilities include a swimming pool, barbecue area, covered and uncovered parking areas, storage area, an electric vehicle charging point and green areas.

The complex benefits from secure gated entrance and video intercom entry system to all units.

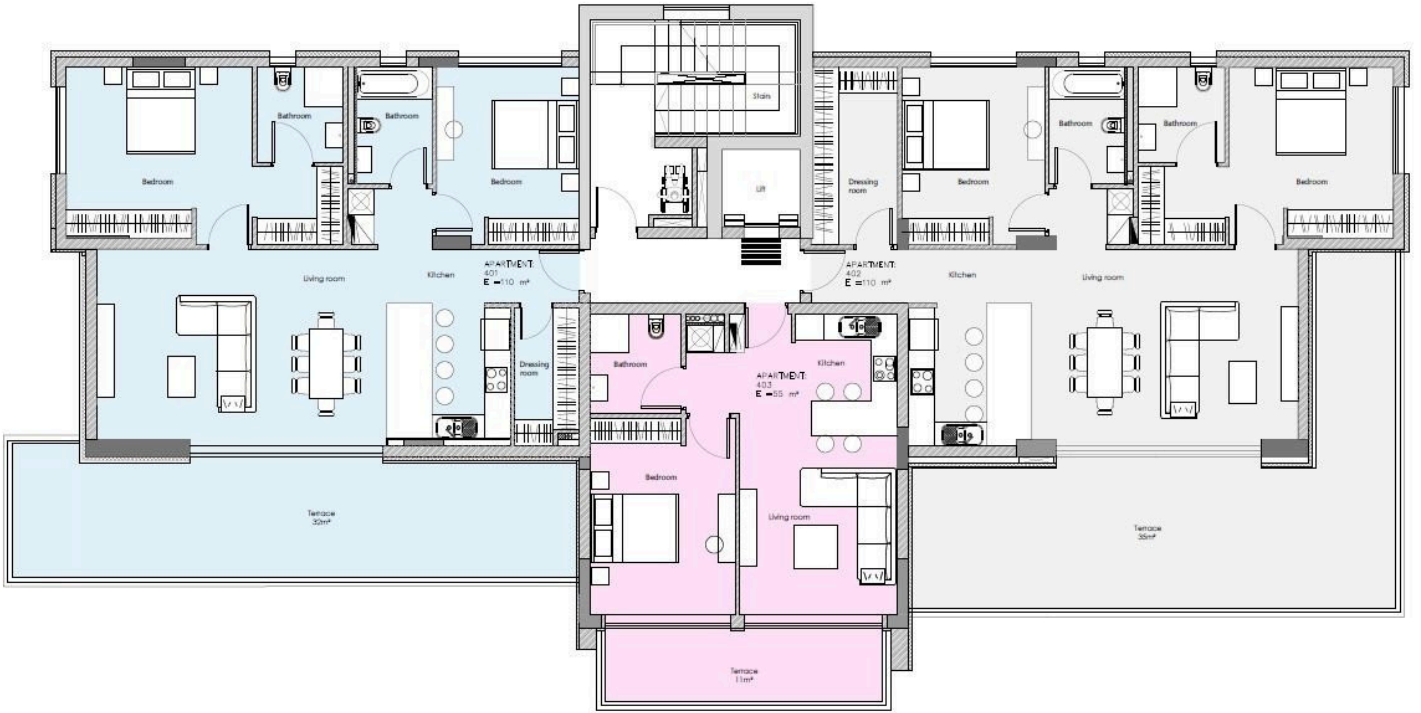
Each apartment has a storage room and a parking space.

The large verandas and rooftop terraces provide beautiful views to the mountains and the city.

*Location on the map is indicative.



Floor plans



N



Additional information

Facilities

Aircondition, Central system

Heating, Underfloor

Parking, Covered

Pool, Communal

Solar photovoltaic panels

Storage

Features

Double glazing


High ceilings

Thermal insulation

Contact us



Vassilis Papadopoulos

 (+357) 99662023

 info@cyprusdomus.com

