

#3617

New Ultra Modern Office In Mesa Geitonia Area

📍 Mesa Geitonia, Limassol

€1,159,000 +VAT





Overview

Specifications

Covered

 175 m²

Type	Office	Status	Under construction
Toilets	2		

Description

Thoughtfully designed as a high - performance office building, the Project delivers enhanced opportunities for high levels of employee satisfaction, greater productivity, and improved mental and physical well-being.

To accomplish these objectives, the building benefits from an integrated design approach that focuses on meeting design and functionality objectives.

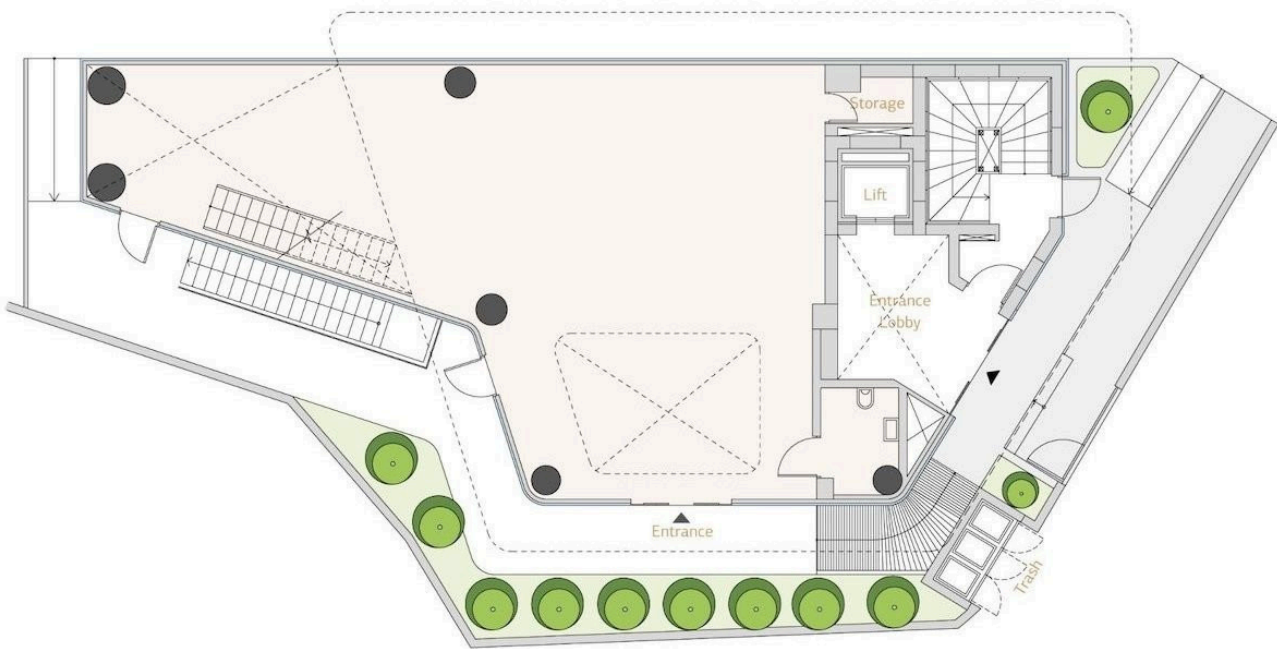
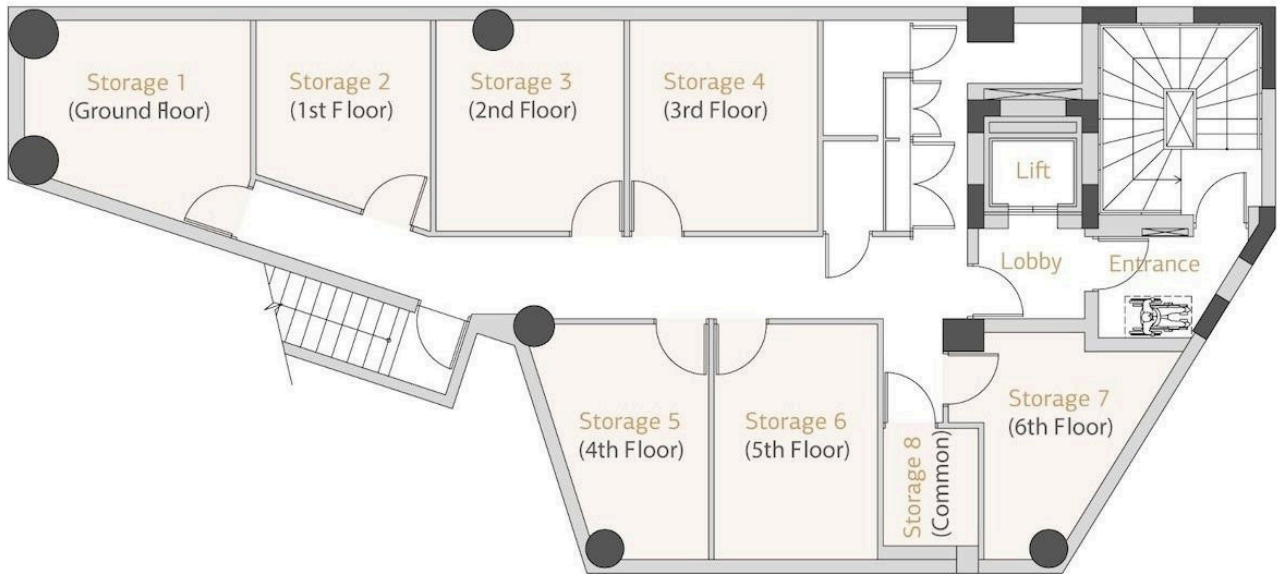
To meet the corporate needs of its occupants, adaptable and advanced infrastructure working environments are incorporated throughout.

At the same time, the building addresses all key elements that ensure optimal employee well- being : it is safe, healthy, comfortable, durable, aesthetically - pleasing, sustainable, and fully accessible.

*Location on the map is indicative.



Floor plans



Additional information

Facilities

Aircondition, Central system

Elevator

Parking, Underground

Solar photovoltaic panels

Features

24-hour security

Alarm system

Ceramic tiles

Double glazing

Easy access to highway

Easy access to main roads

Internet

Kitchenette

Luxury specifications

Meeting room

Near amenities

Raised floors

Reception

Roof garden

Sea view

Secure door

Sound insulation

Thermal insulation

Contact us



Vassilis Papadopoulos

☎ (+357) 99662023

✉ info@cyprusdomus.com

