

#3844

New Modern Apartments In Parekkklisia Area

📍 Parekkklisia, Limassol




€275,000 +VAT





Overview

Specifications

Bedrooms	Bathrooms	Covered
 2	 2	 78.5 m ²
Type	Apartment	
Status	Off plan	

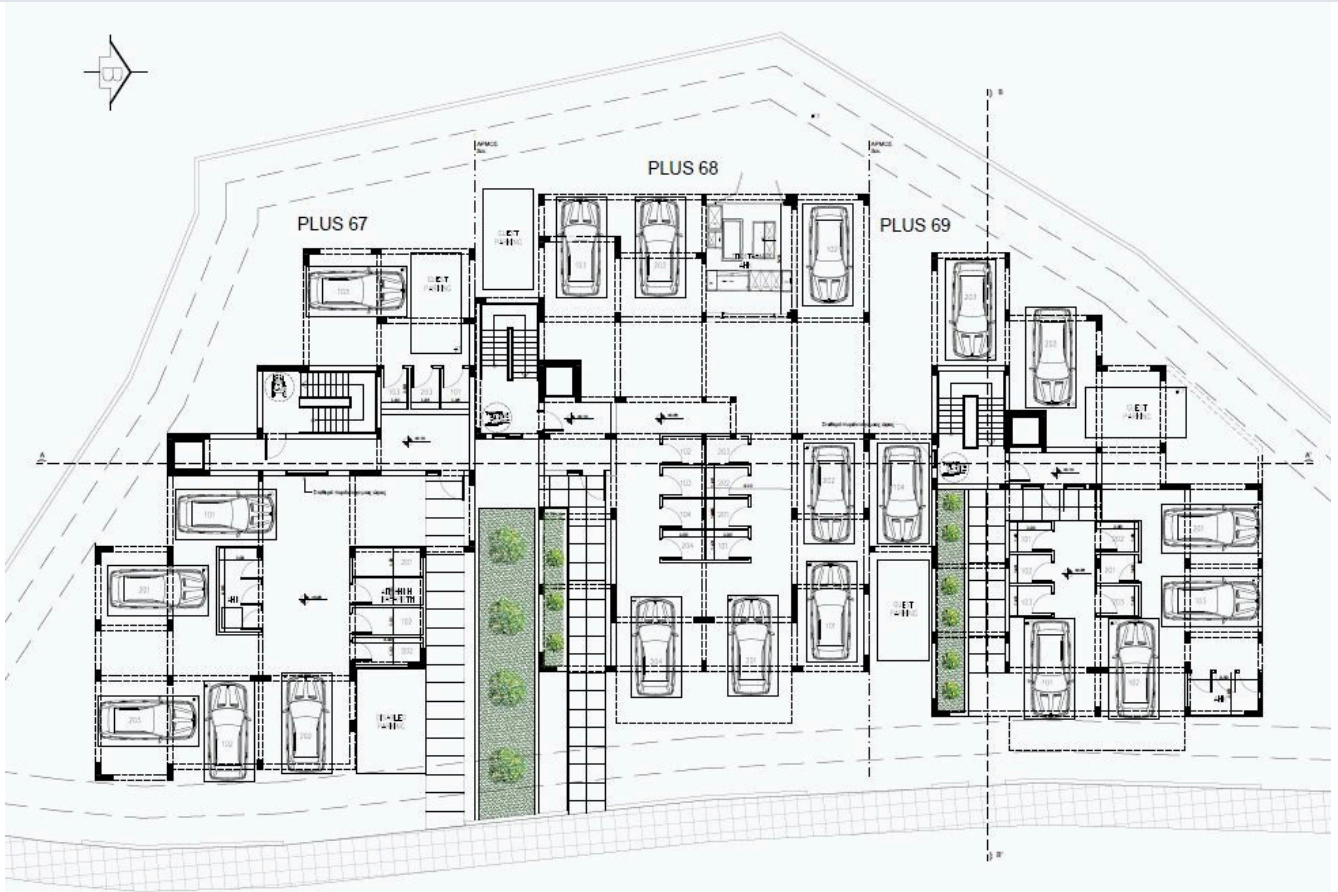
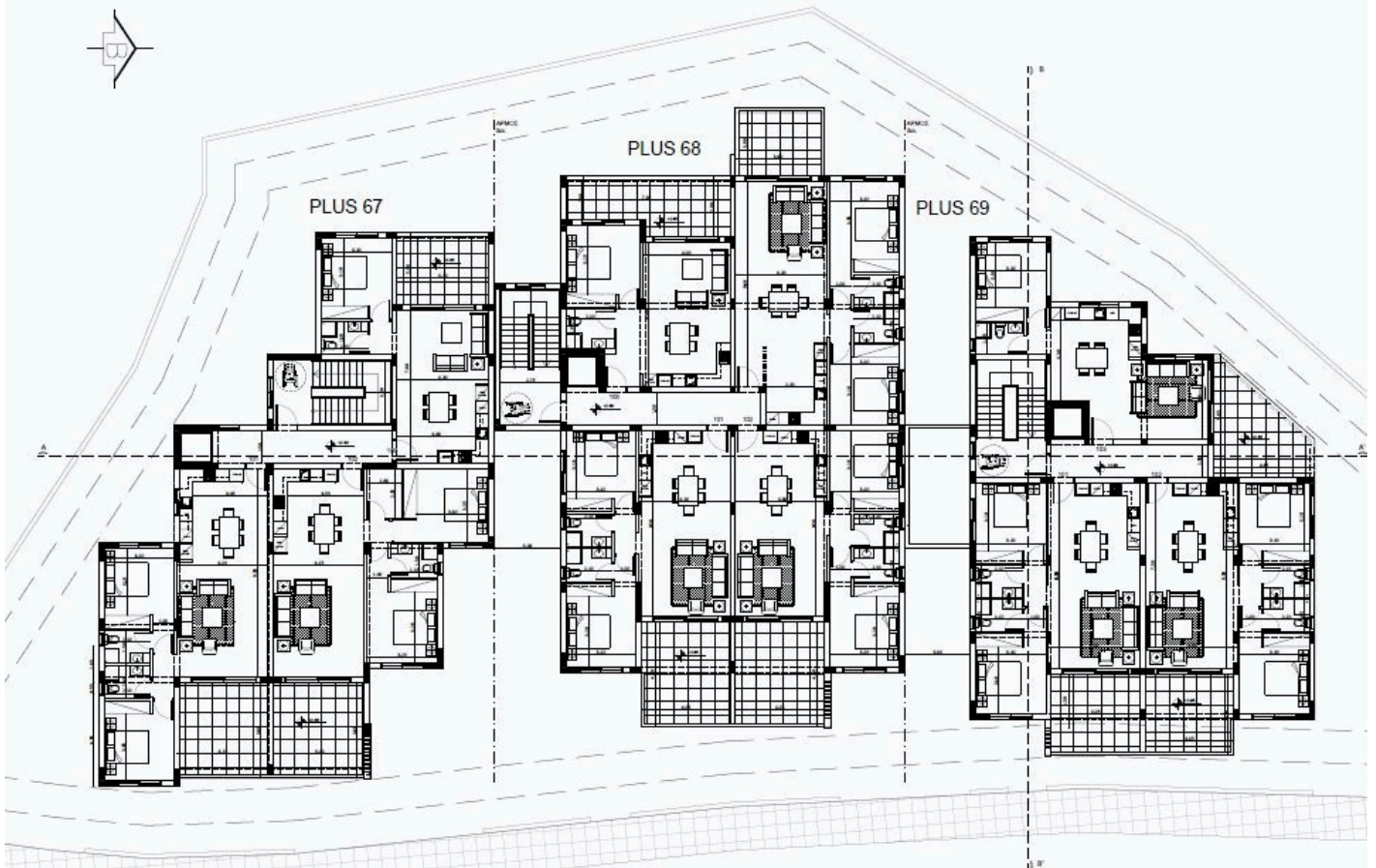
Description

The apartments consist of an open plan kitchen, dining and living area, 2 bedrooms and 2 bathrooms (1 en-suite).
It has 1 covered parking and 1 storage.

*Location on the map is indicative.



Floor plans



Additional information

Facilities

Parking, Covered

Storage

Features

En suite bathroom

Contact us



Vassilis Papadopoulos

📞 (+357) 99662023

✉️ info@cyprusdomus.com

