

#3967

New Luxury Apartments In Germasogeia Area

📍 Germasogeia Tourist Area, Limassol



€666,600 +VAT





Overview

Specifications

Bedrooms	Bathrooms	Covered	
 2	 2	 94.2 m ²	
Type	Apartment	Status	Under construction

Description

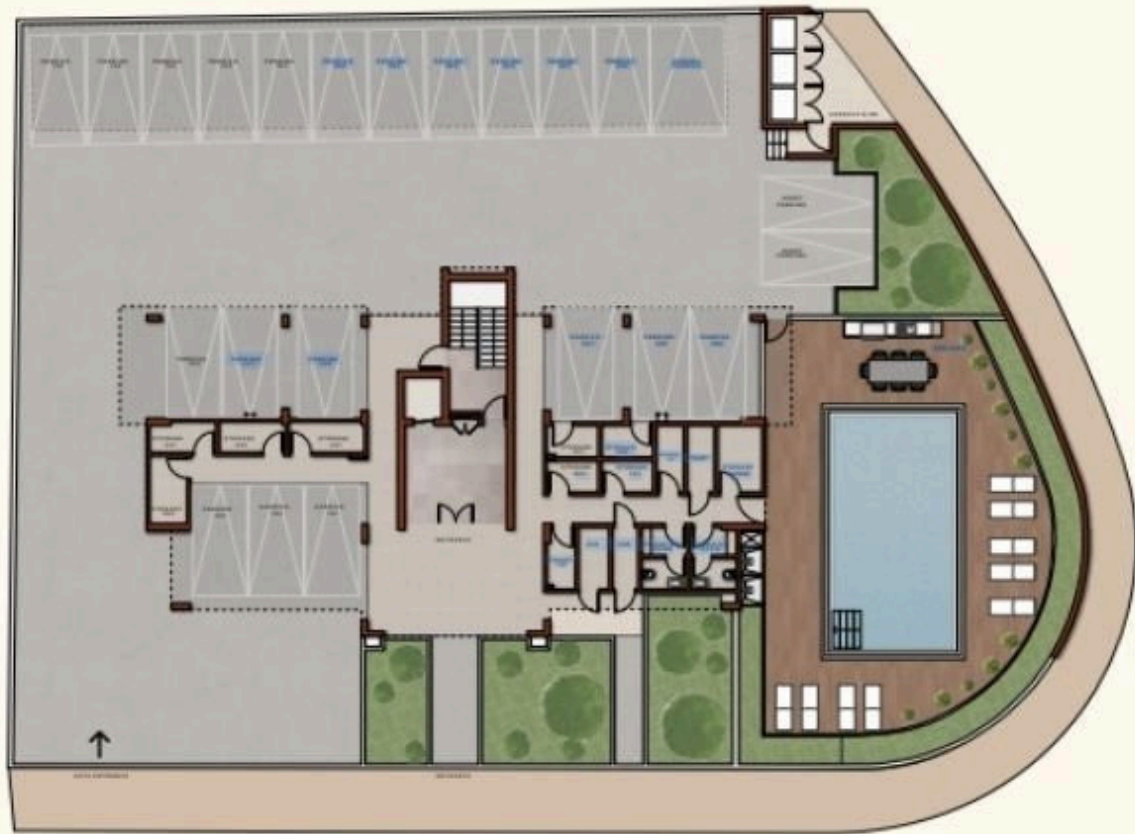
The Project has been designed with great attention to detail.

Every aspect of the building has been carefully thought through and designed to ensure a seamless and harmonious experience for its residents.

From bespoke lighting to high-quality finishes and unique textures and materials, it emphasizes on individuality and is the perfect fit for those seeking a first- class urban living experience.

*Location on the map is indicative.

Floor plans



Additional information

Facilities

Parking, Covered

Pool, Communal

Storage

Features

Double glazing

En suite bathroom

Thermal insulation

Contact us



Vassilis Papadopoulos

📞 (+357) 99662023

✉️ info@cyprusdomus.com