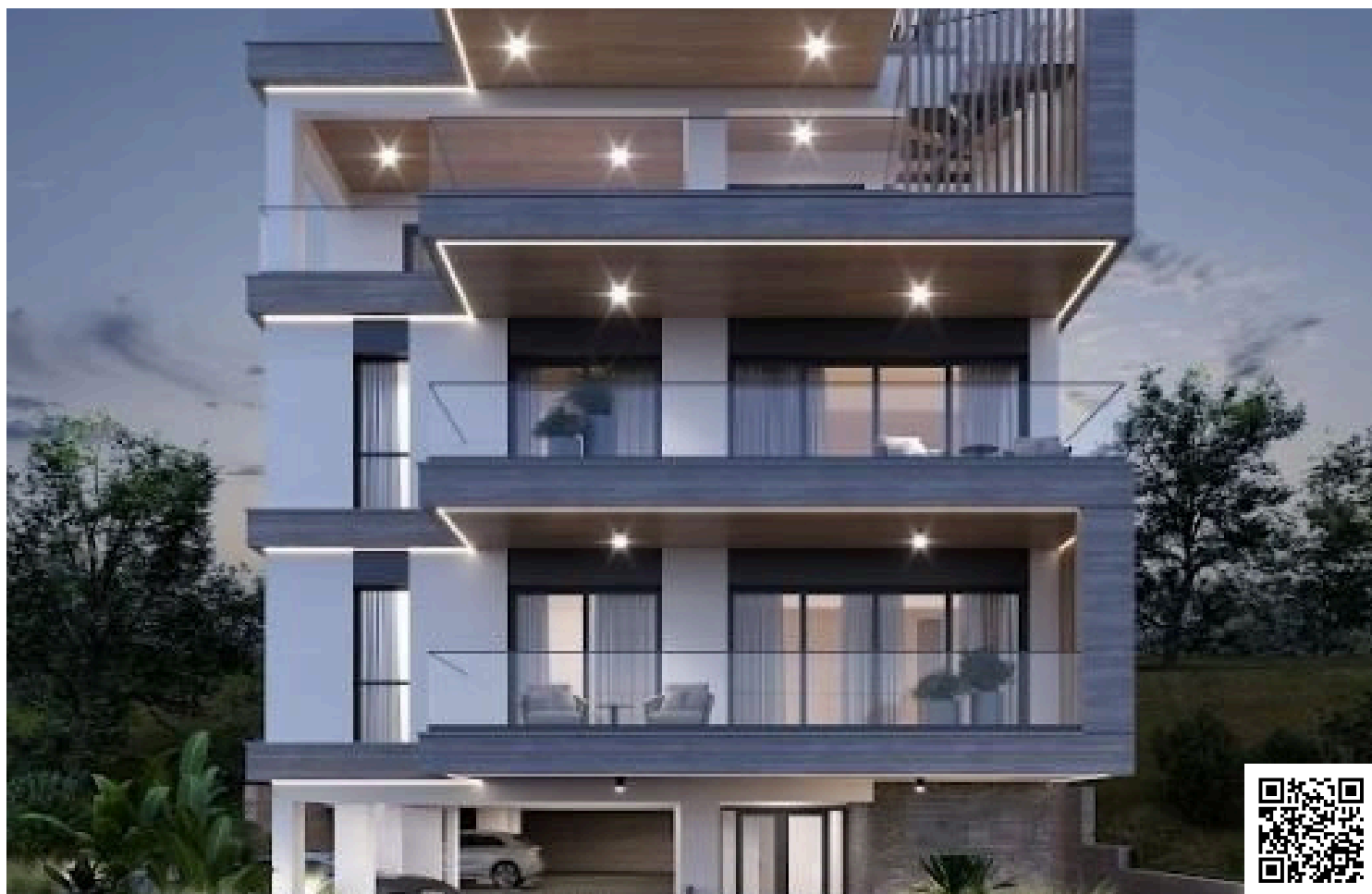


#3969

New Luxury Apartment In Germasogeia Area

 Germasogeia Tourist Area, Limassol

€504,000 +VAT





Overview

Specifications

Bedrooms



2

Bathrooms



2

Covered

84.6 m²

Type

Apartment

Status

Under construction

Covered veranda

26.3 m²

Description

The Project's remarkable privacy and breathtaking views derive from its unparalleled location in the lush green surroundings.

The thoughtfully designed building with a total of 7 luxury residences offers a boutique living experience.

The project is the ultimate home for those who have a sense of style and believe that it is the little things - the details - that make great difference.

Only five-minute drive from the city center, yet completely independent, it offers a warm, relaxed atmosphere with charming boutiques, galleries, restaurants, street cafes, sports and wellness facilities, as well high-quality kindergartens and schools.

*Location on the map is indicative.



Floor plans



Additional information

Facilities

Aircondition, Central system

Heating, Provision

Parking, Covered

Storage

Features

En suite bathroom

High ceilings

Contact us



Vassilis Papadopoulos

📞 (+357) 99662023

✉️ info@cyprusdomus.com

