

#4125

# New Modern Office Building In Kato Polemidia Area

 Kato Polemidia, Limassol

**€70,000** /month



# Overview

## Specifications

Covered

 1423 m<sup>2</sup>

Type	Commercial Building
Plot	1323 m <sup>2</sup>
Covered veranda	275 m <sup>2</sup>
Uncovered veranda	90 m <sup>2</sup>

Basement	700 m <sup>2</sup>
Covered parking	70 m <sup>2</sup>
Status	Under construction

## Description

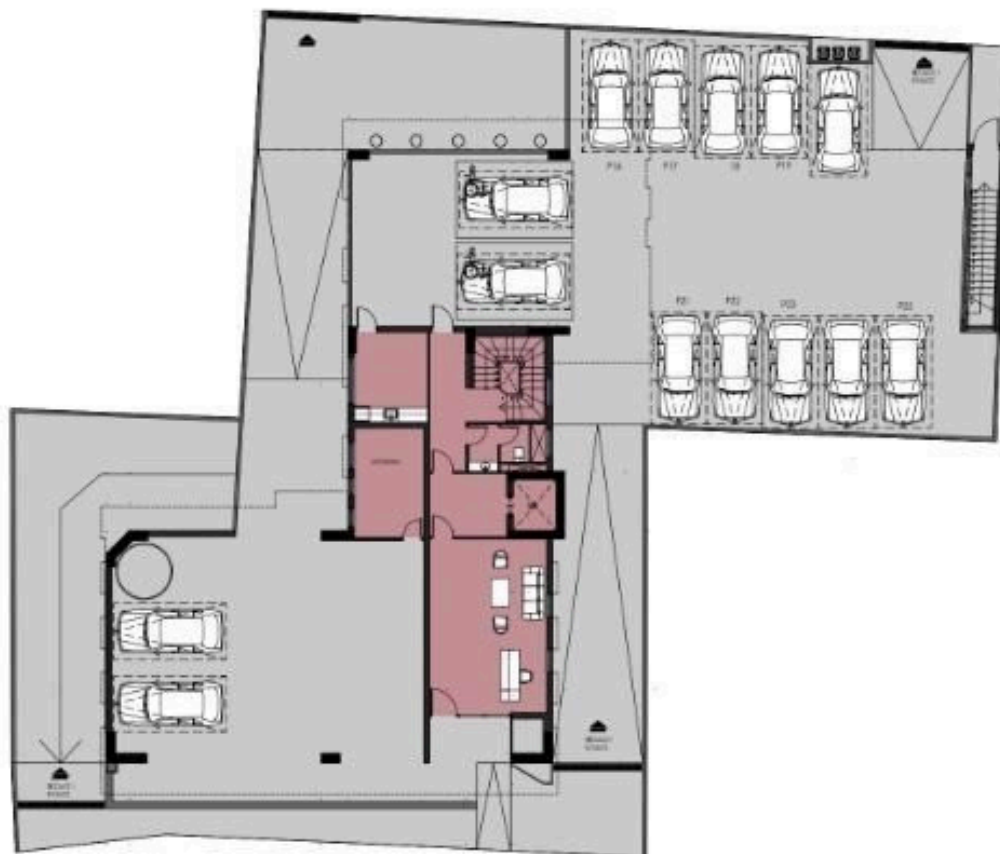
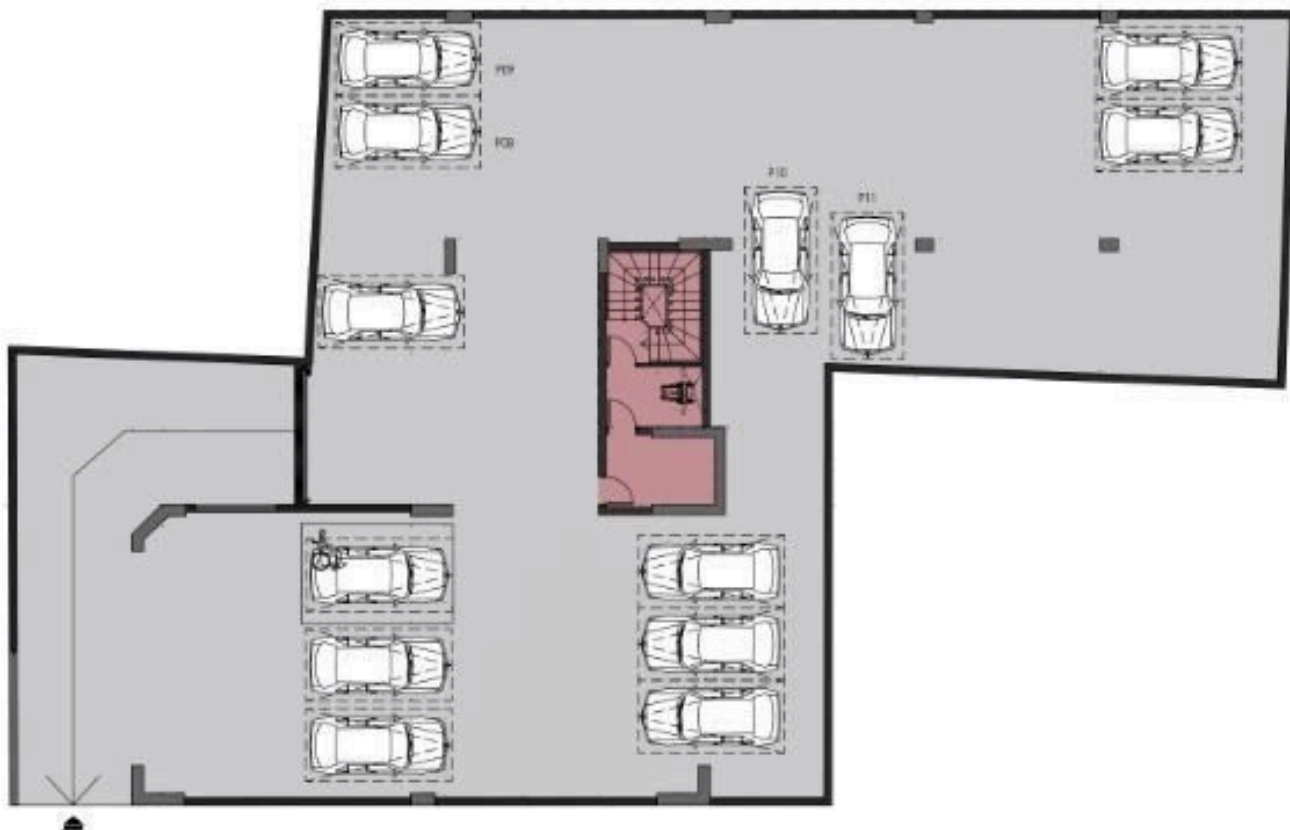
A landmark business center, located in one of Limassol’s main commercial hub.

This outstanding building comprises of 6 floors of commercial office space, all of which are meticulously designed to reach the level of quality any high calibre business deserves and expects.

Furthermore, the floor to ceiling windows provide astonishing city and mountain views, complementing the open plan configuration.

It is located at Kato Polemidia area , boasting close proximity to significant related infrastructures such as respectable business centers, banks and restaurants.

# Floor plans



# Additional information

## Facilities

Aircondition, Central system

## Features

CCTV

Fire detector

## Contact us



**Vassilis Papadopoulos**



(+357) 99662023



info@cyprusdomus.com