

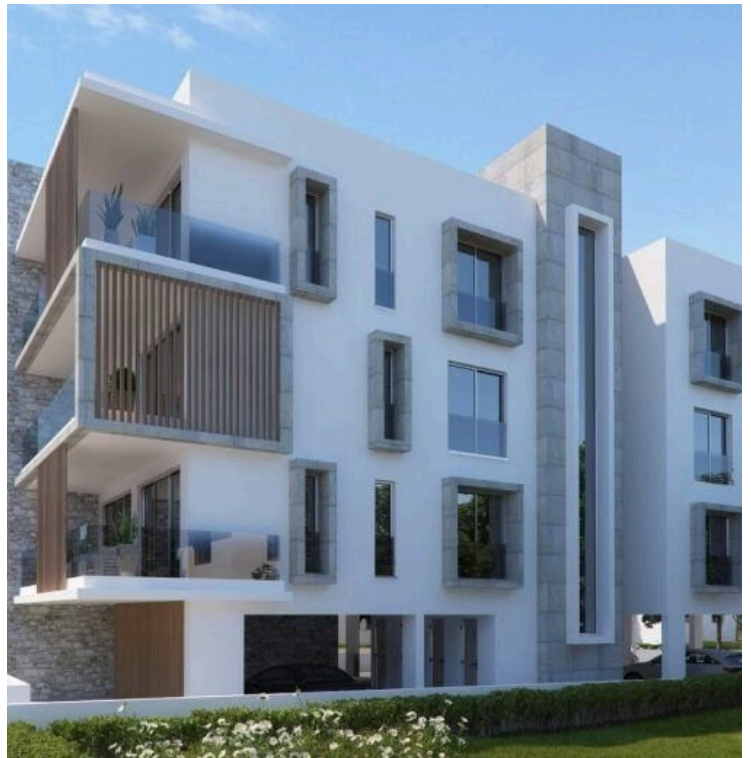
#4146

New Contemporary Apartments In Kato Polemida

📍 Kato Polemida, Limassol

€209,000 +VAT





Overview

Specifications

Bedrooms



Bathrooms



Covered

 **48.8 m²**

Type

Apartment

Status

Under construction

Description

Every unit has been crafted with generous spaces and home comfort in mind.

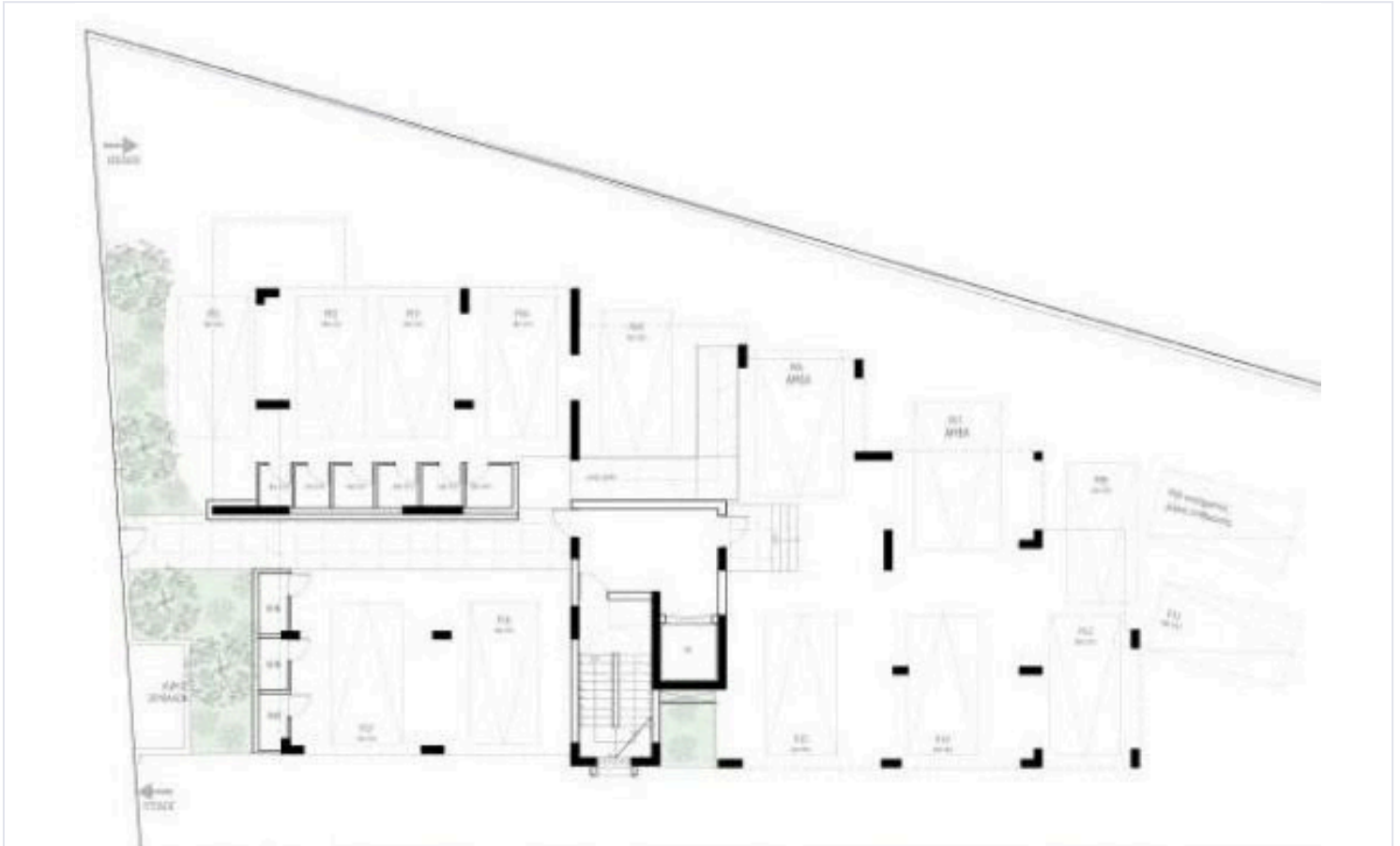
The open-plan kitchen, living room, and dining area create an inviting and airy ambiance, ideal for both relaxation and entertaining.

Additionally, the apartments feature large verandas, extending the living space outdoors and allowing residents to savor Limassol's pleasant weather.

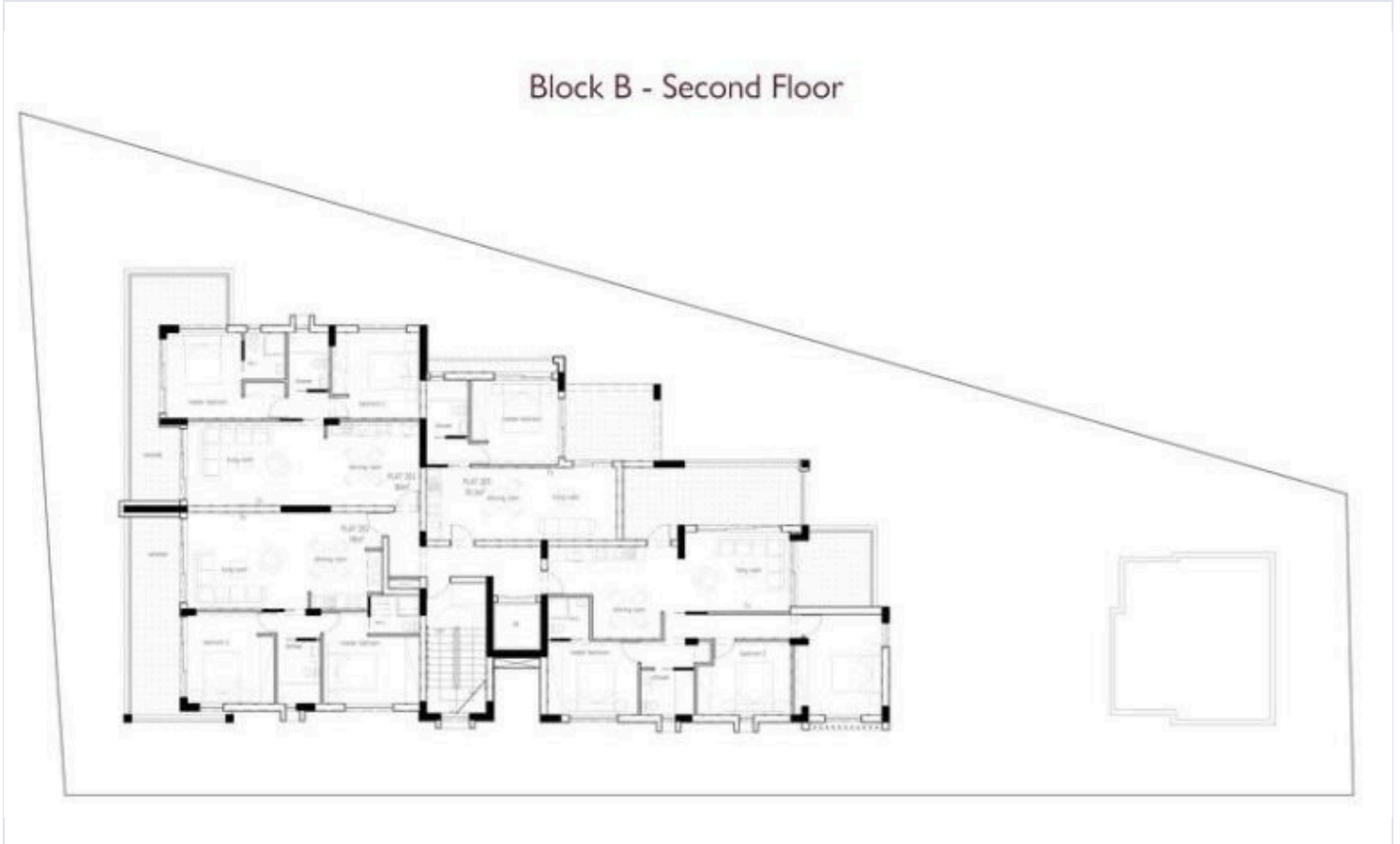
*Location on the map is indicative.



Floor plans



Block B - Second Floor



Additional information

Facilities

Parking, Covered

Solar water heater

Storage


Features

Double glazing

Contact us



Vassilis Papadopoulos

 (+357) 99662023

 info@cyprusdomus.com

