

#4222

New Commercial Building In Limassol's Historical Center

 Historical Center, Limassol

€4,800,000 +VAT





Overview

Specifications

Covered

 **795 m²**

Type

Commercial Building

Status

Off plan

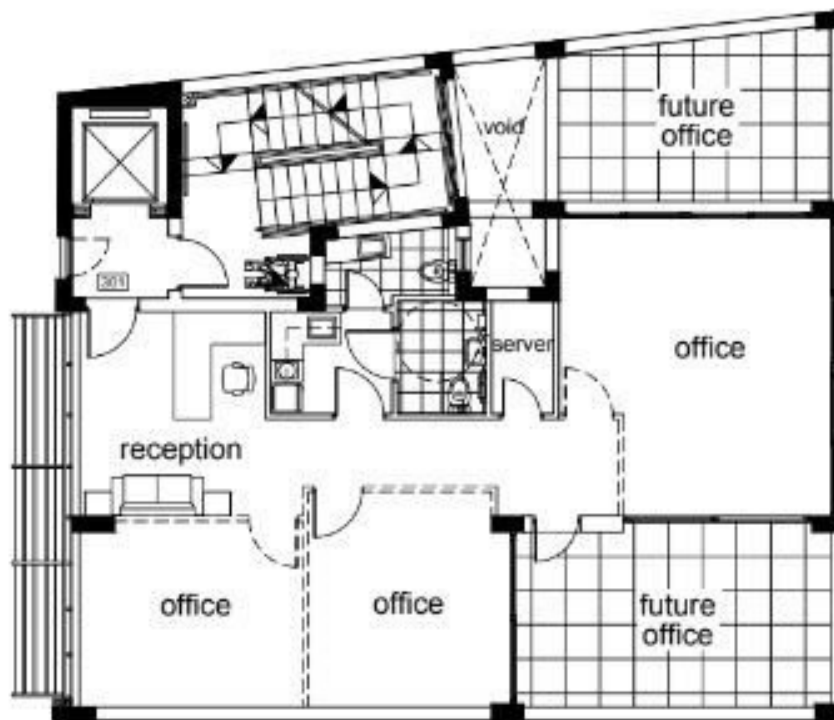
Description

This project is a 5-floor office building, which includes ground floor (reception), 4 floors of offices and a roof bar garden.

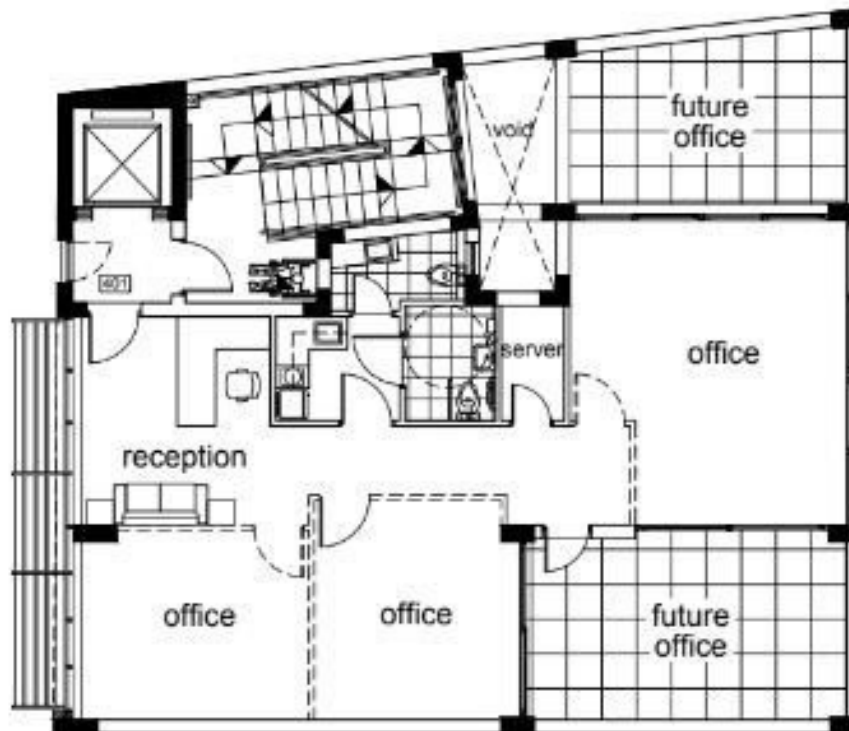
*Location on the map is indicative.



Floor plans



3rd floor - office



4rth floor - office



Additional information

Facilities

Parking, Covered

Contact us



Vassilis Papadopoulos

☎ (+357) 99662023

✉ info@cyprusdomus.com

