

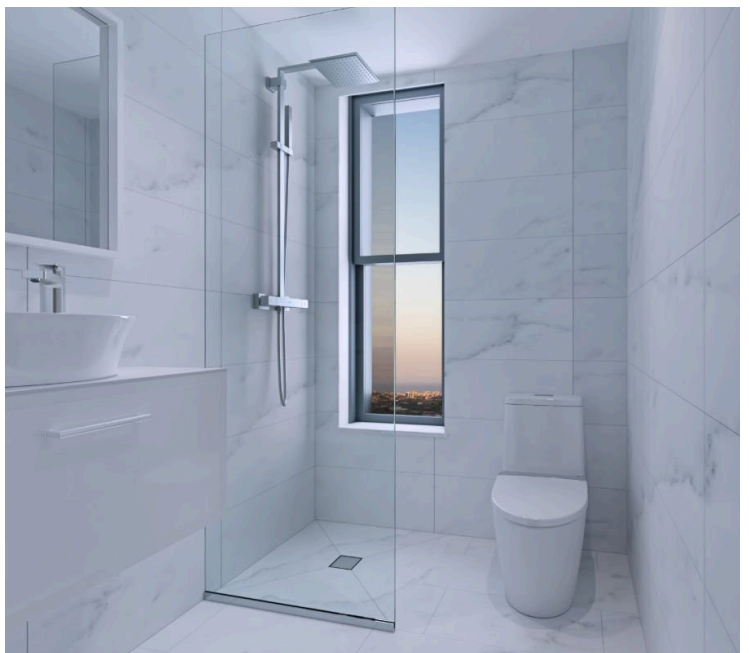
#4280

# New Modern Apartment In Germasogeia Area

📍 Germasogeia, Limassol

€275,000 +VAT





# Overview

## Specifications

Bedrooms



Bathrooms



Covered

 50 m<sup>2</sup>

Type

**Apartment**

Status

**Off plan**

Covered veranda

**16 m<sup>2</sup>**

Energy efficiency rating



## Description

An exquisite apartment development located in the vibrant neighborhood of Germasogeia, Limassol.

This contemporary residential complex offers a three-storey building comprising a total of eight exceptional apartments.

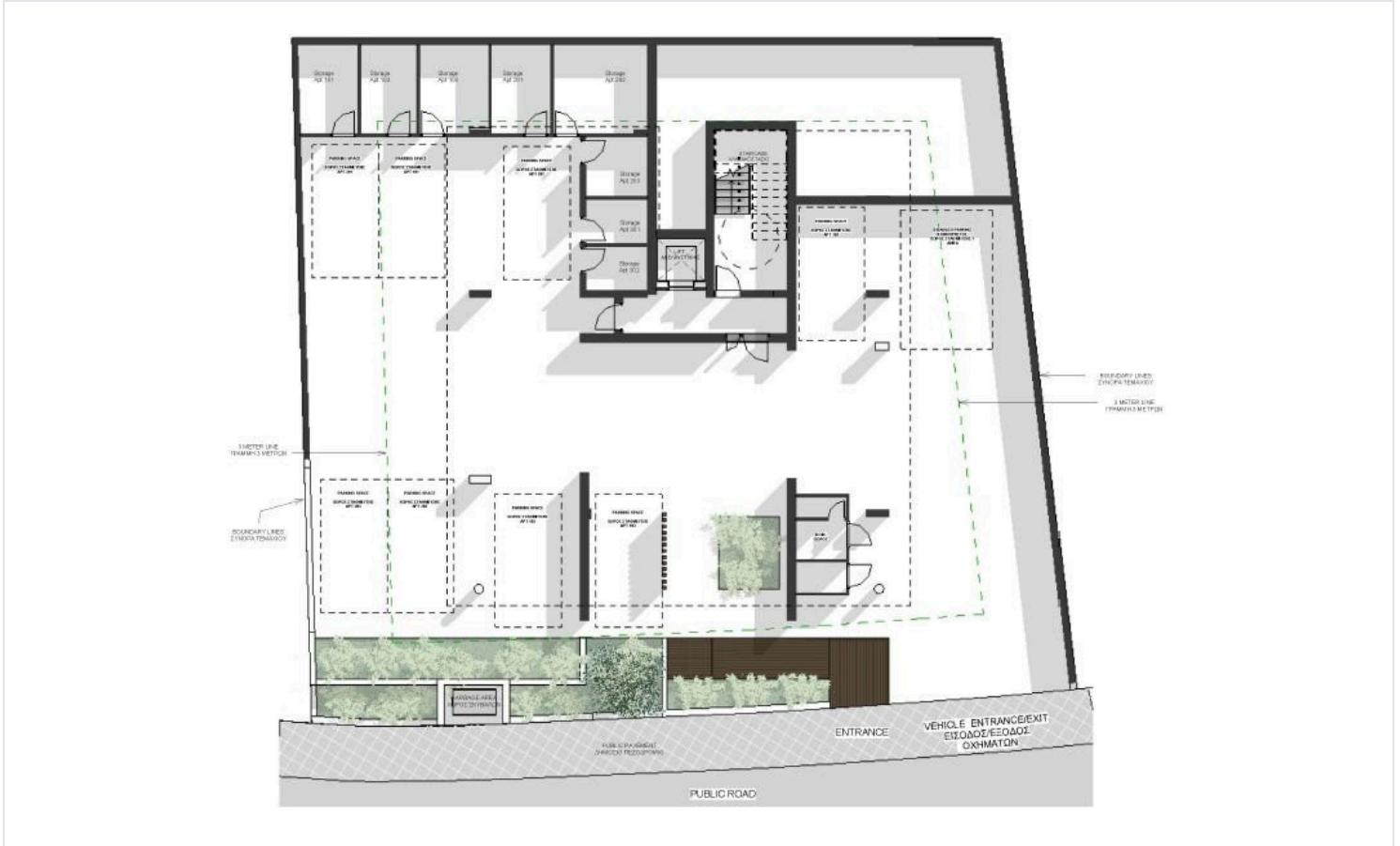
The development includes five elegant 1-bedroom apartments and three spacious 2-bedroom apartments, each featuring covered verandas.

One of the standout features of the Project is its breathtaking panoramic views, encompassing the stunning cityscape and the glistening Mediterranean Sea.

\*Location on the map is indicative.



# Floor plans



# Additional information

## Facilities

Landscaped garden

Parking, Covered

Solar water heater

Storage

## Features

Alarm system (provision)

Double glazing

Irrigation system

Parquet flooring

Pressurized water system

## Contact us



**Vassilis Papadopoulos**

☎ (+357) 99662023

✉ info@cyprusdomus.com

