

#4373

# New penthouse for sale with spectacular sea view and swimming pool in Panthea area

📍 Agios Athanasios, Limassol

€625,000 +VAT





# Overview

## Specifications

Bedrooms



4

Bathrooms



2

Covered

105 m<sup>2</sup>

Type

**Apartment**

Status

**Under construction**

Toilets

**1**

## Description

This 3+1 bedroom penthouse is part of a project that compromises 1,2,3 Bedroom beautiful Apartments with spectacular sea view and mountain views.

It consists of an open plan kitchen, living room and dining area, 2 bathrooms (1 ensuite) and 1 toilet. (Extra room on the roof with 1 toilet).

The Project includes a Communal Swimming Pool and Garden.

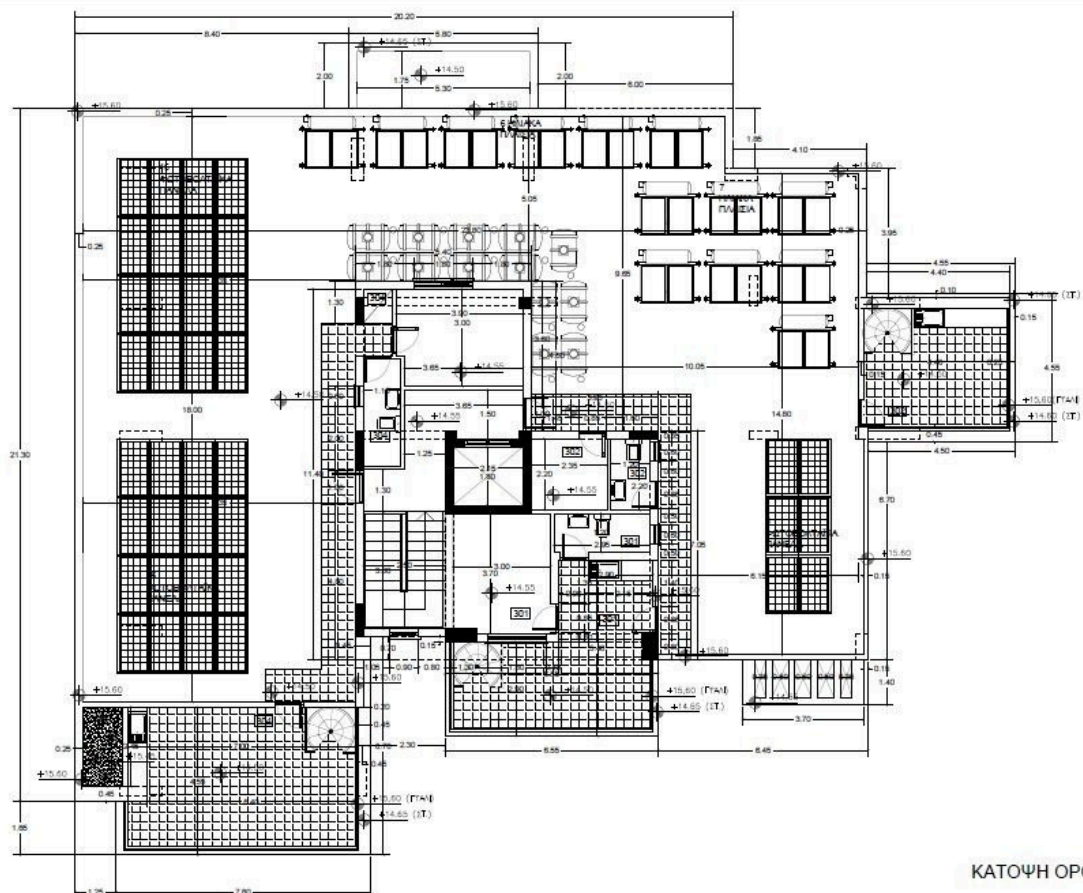
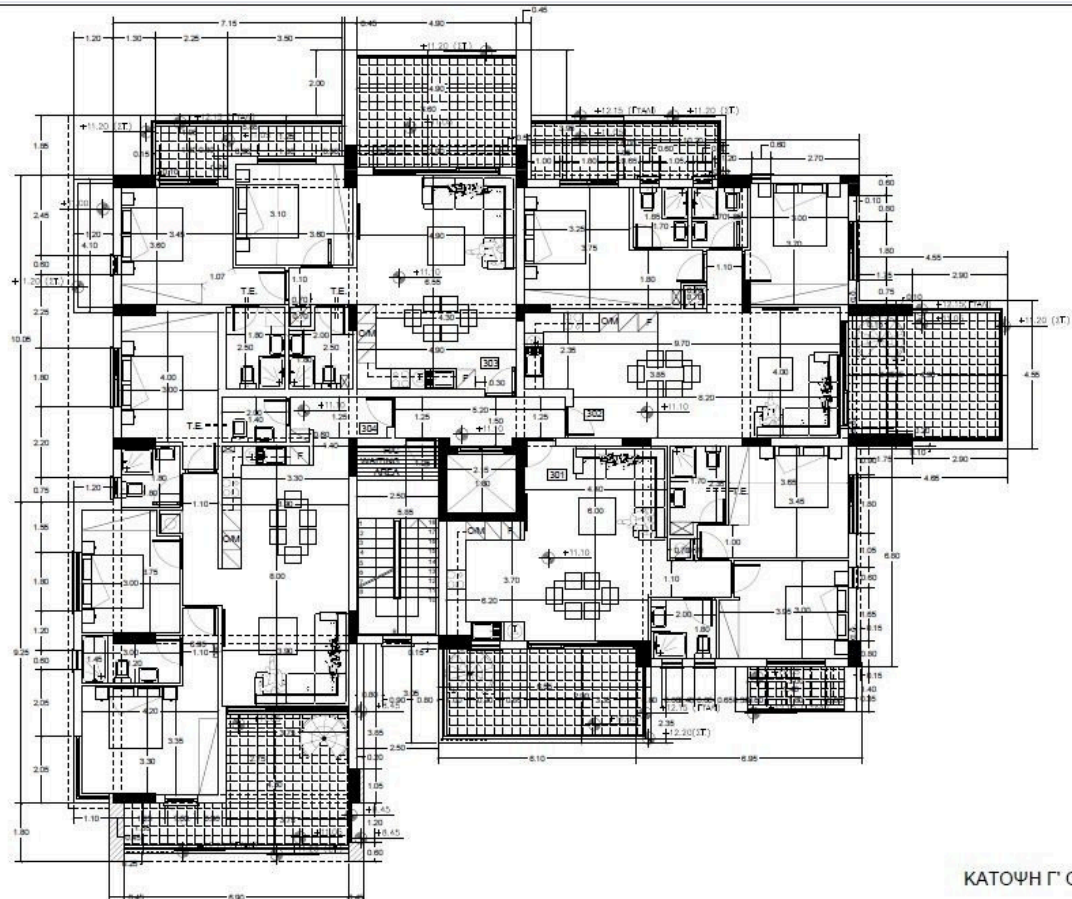
PANTHEA AREA is a highly developed Area which has been chosen by the social ELITE for it's tranquility and easy access to the highway.

It has 2 parking (1 uncovered) and 1 storage.

\*Location on the map is indicative



# Floor plans



# Additional information

## Facilities

Aircondition, Central system

Gated complex

Heating, Underfloor

Parking, Covered

Pool, Communal

Solar photovoltaic panels

Storage

## Features

Entrance gate

Quiet area

Roof garden

Sea view

## Contact us



**Katerina Athini**

 [katerina@cyprusdomus.com](mailto:katerina@cyprusdomus.com)