

#4474

New House for sale in Souni

 Souni, Limassol





€680,000 +VAT





Overview

Specifications

Bedrooms		Bathrooms		Covered	
 4		 2		 180 m ²	
Type		House			
Toilets		1			
Plot		753 m ²			
Status		Off plan			
Energy efficiency rating		 A			

Description

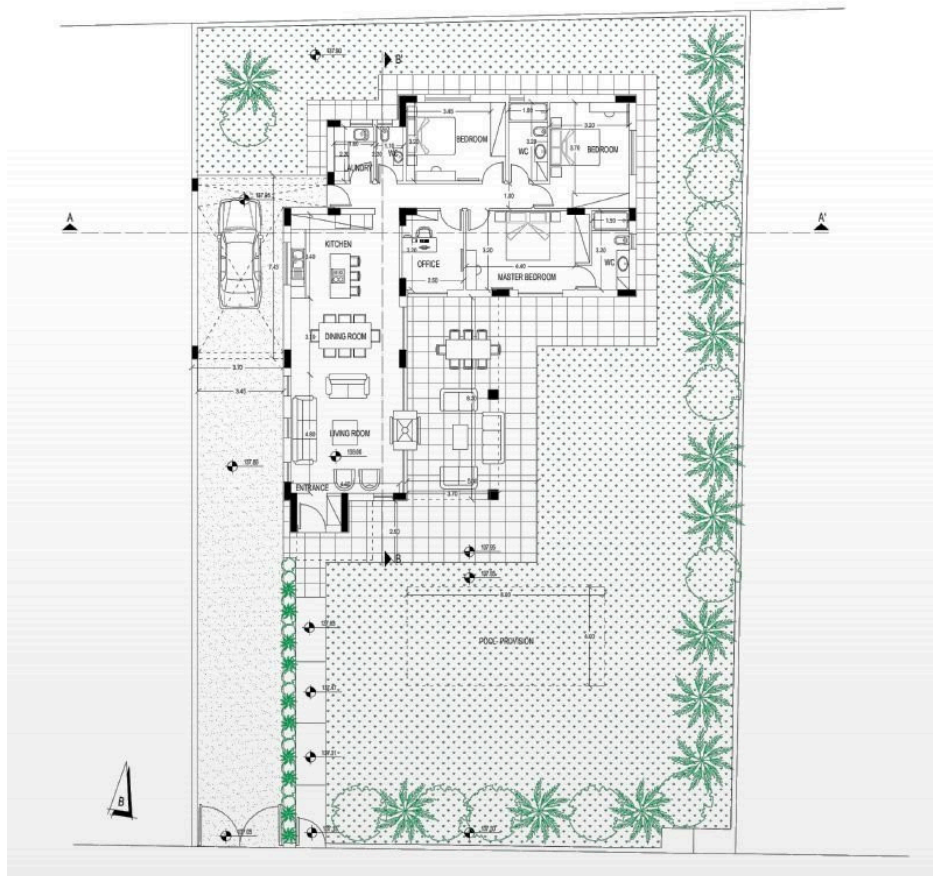
This development is located in the elevated peaceful village of Souni in Limassol.

With the picturesque scenery of rolling hills and lush greenery, Souni offers a peaceful escape from the hustle and bustle of the city life.

The house consists of 3 bedrooms + 1 study room/bedroom, open plan kitchen dining and living area, 2 bathrooms (1 en-suite) and 1 guest w/c.

*Location on the map is indicative

Floor plans



PROJECT PLAN



House Number	1	2	3	4	5	6	7	8	9	10	11	12	13	14	15	16
Type	C	C	B	B	A	A	A	A	A	C	C	B	B	B	C	C
Land, m ²	753	753	753	753	753	753	753	753	753	764	753	753	753	753	753	784
Total Covered Area, m ²	180	180	180	180	180	180	180	180	180	180	180	180	180	180	180	180
Parking, m ²	21	21	21	21	29	29	29	29	29	21	21	21	21	21	21	21
Swimming Pool	Optional	Optional	Optional	Optional	Optional	Optional	Optional	Optional	Optional	Optional	Optional	Optional	Optional	Optional	Optional	Optional
Total Gross Area, m ²	201	201	201	201	209	209	209	209	209	201	201	201	201	201	201	201

Additional information

Facilities

Aircondition, Provision

Childrens playground

Heating, Underfloor

Parking, Covered

Pool, Optional

Tennis court

Features

Country view

Laundry room

Study

Veranda

Contact us



Katerina Athini

 katerina@cyprusdomus.com