

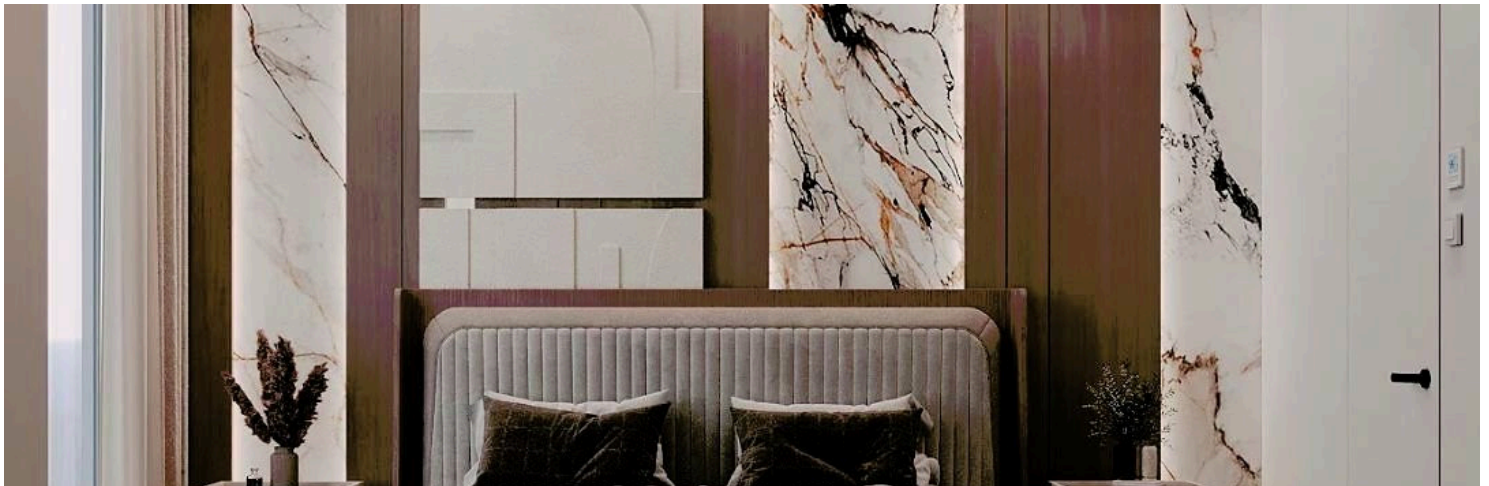
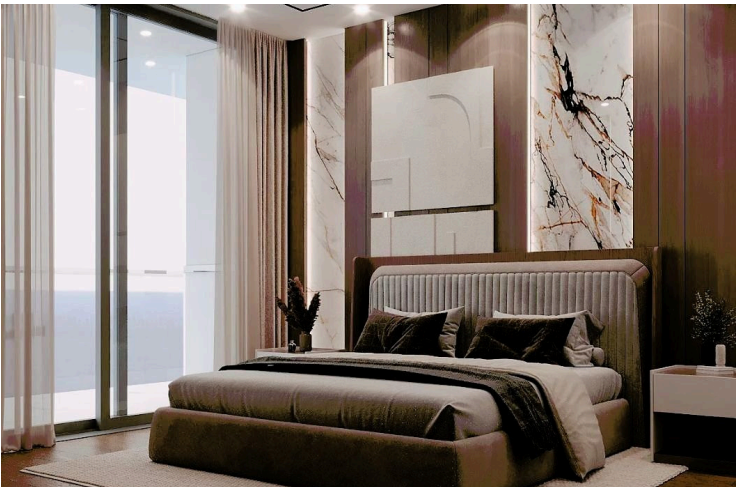
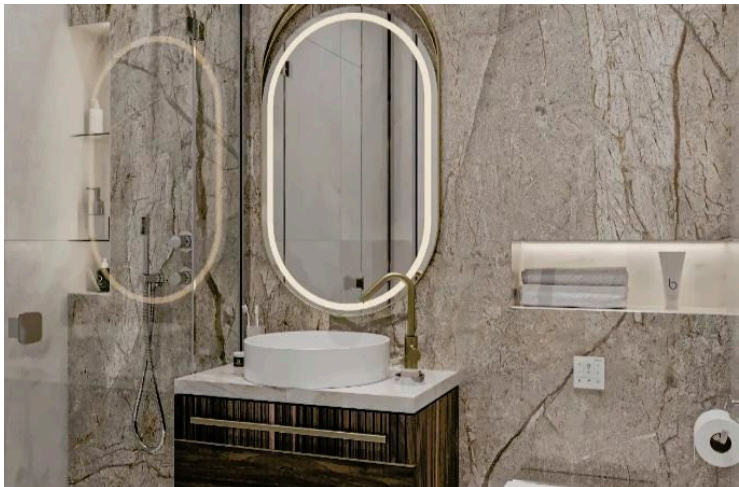
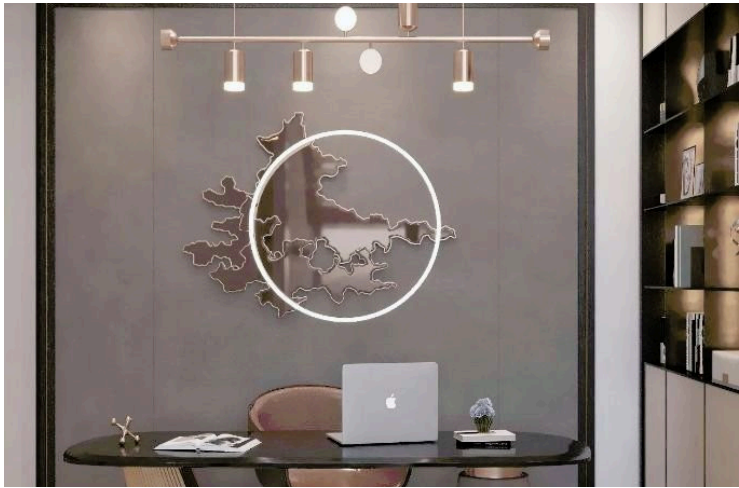
#4771

New Luxury Sea View Apartment in Germasogeia Area.

 Germasogeia Tourist Area, Limassol

€3,252,960 +VAT





Overview

Specifications

Bedrooms



3

Bathrooms



4

Covered

161 m²

Type

Apartment

Covered veranda

39.8 m²

Status

Under construction

Energy efficiency rating



Description

Indulge in panoramic luxury, where each of the 29 sea-view apartments and three penthouses present captivating views.

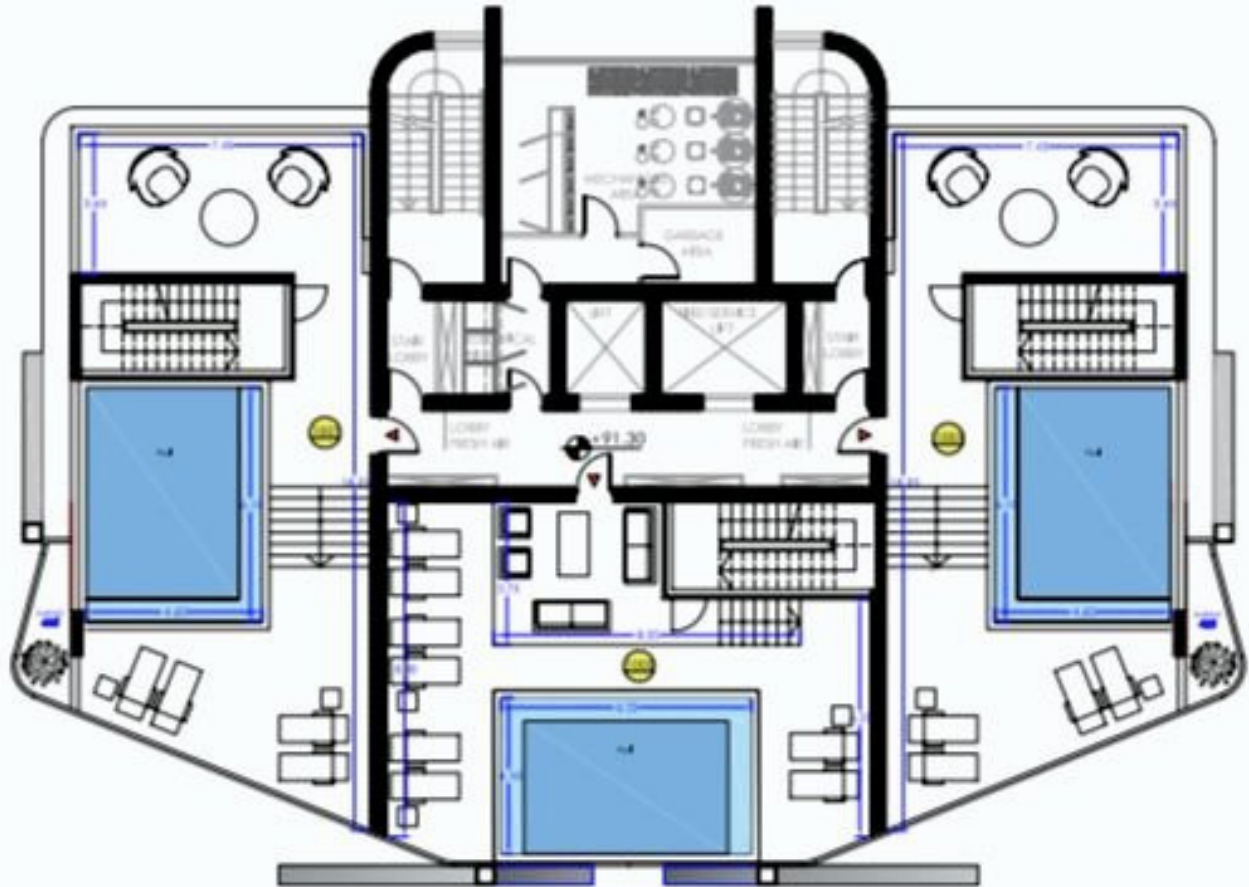
The complex is designed with innovative 1st floor apartments positioned 23 meters above the ground for an unobstructed sea view.

A spacious 2-level gym with world-leading fitness equipment, 25 meter swimming pool, sauna, jacuzzi are located on the 1st and 2nd floors of the building.

*Location on map is indicative.



Floor plans



Additional information

Facilities

Aircondition, Central system

Gym

Pool, Private

Childrens playground

Heating, Underfloor

Sauna

Gated complex

Parking, Underground

Storage

Features

24-hour security

Barbeque

High ceilings

Marble flooring

Smart home automation

Alarm system

CCTV

Jacuzzi

Office

Sound insulation

Balcony

Fire detector

Luxury specifications

Sea view

Thermal insulation

Contact us



Katerina Athini

✉ katerina@cyprusdomus.com

