

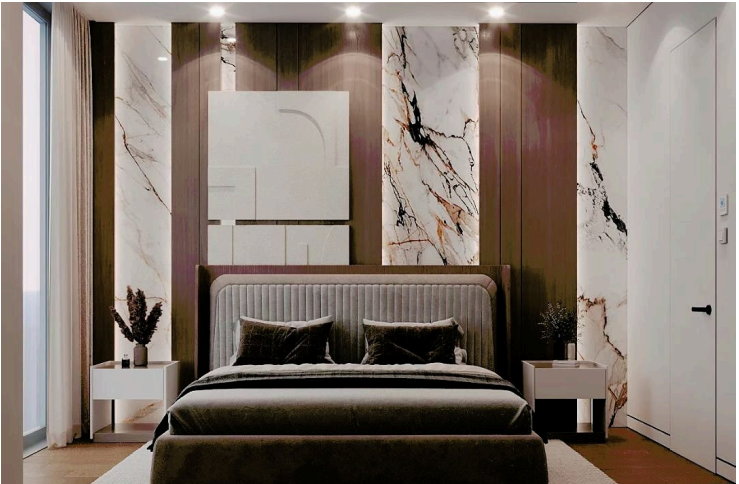
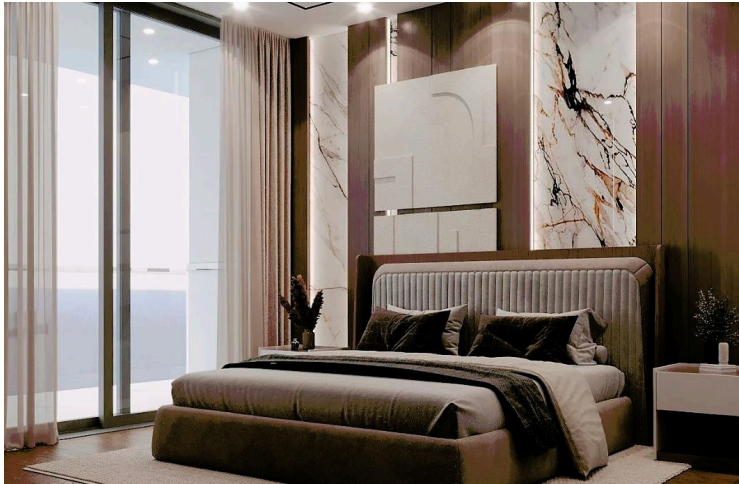
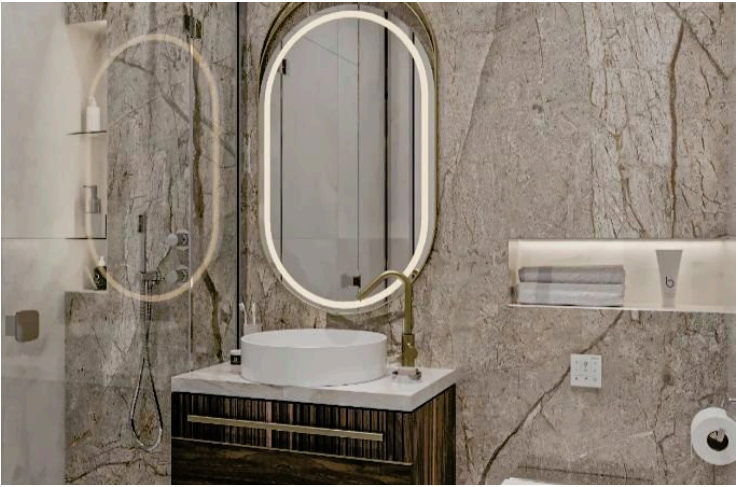
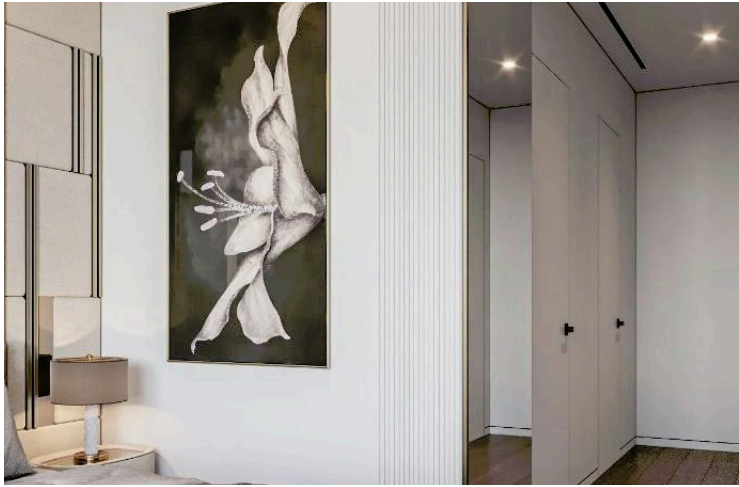
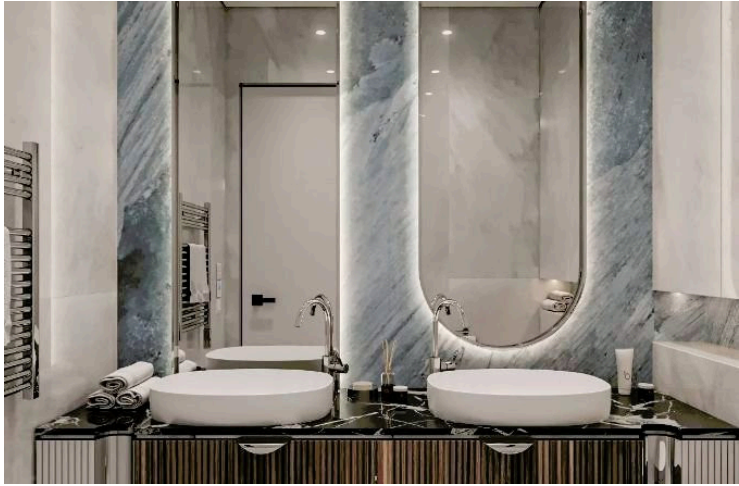
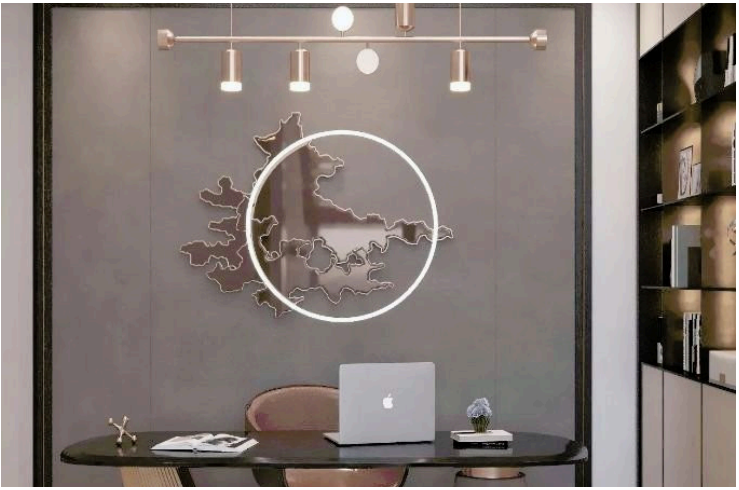
#4771

New Luxury Sea View Penthouse with private Swimming pool in Germasogeia Area.

 Germasogeia Tourist Area, Limassol

€5,025,000 +VAT





Overview

Specifications

Bedrooms



3

Bathrooms



4

Covered

201 m²

Type

Apartment

Status

Under construction

Energy efficiency rating



Description

Indulge in panoramic luxury, where each of the 29 sea-view apartments and three penthouses present captivating views.

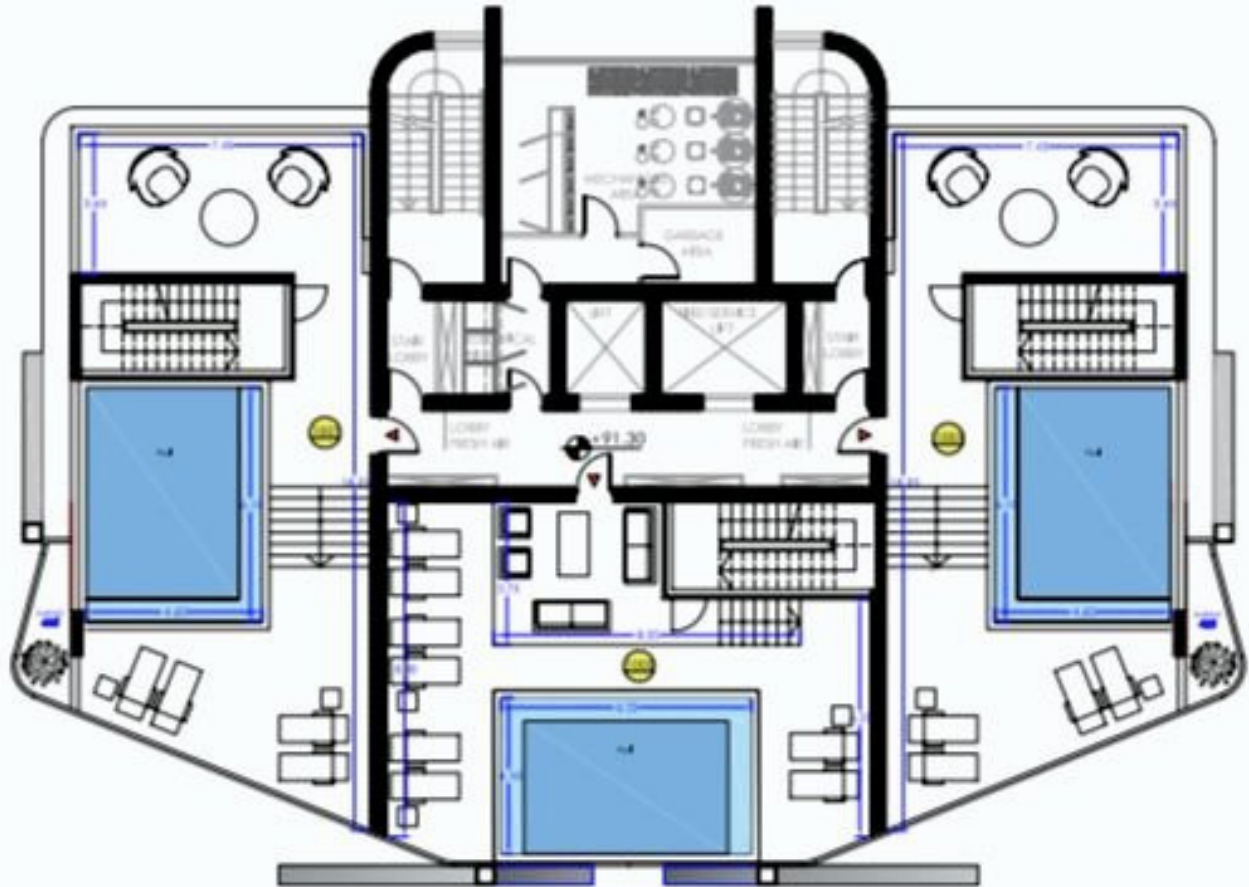
The complex is designed with innovative 1st floor apartments positioned 23 meters above the ground for an unobstructed sea view.

A spacious 2-level gym with world-leading fitness equipment, 25 meter swimming pool, sauna, jacuzzi are located on the 1st and 2nd floors of the building.

*Location on map is indicative.



Floor plans



Additional information

Facilities

Aircondition, Central system

Gym

Pool, Private

Childrens playground

Heating, Underfloor

Sauna

Gated complex

Parking, Underground

Storage

Features

24-hour security

Barbeque

High ceilings

Marble flooring

Sea view

Thermal insulation

Alarm system

CCTV

Jacuzzi

Office

Smart home automation

Balcony

Fire detector

Luxury specifications

Roof garden

Sound insulation

Contact us



Katerina Athini

 katerina@cyprusdomus.com

