

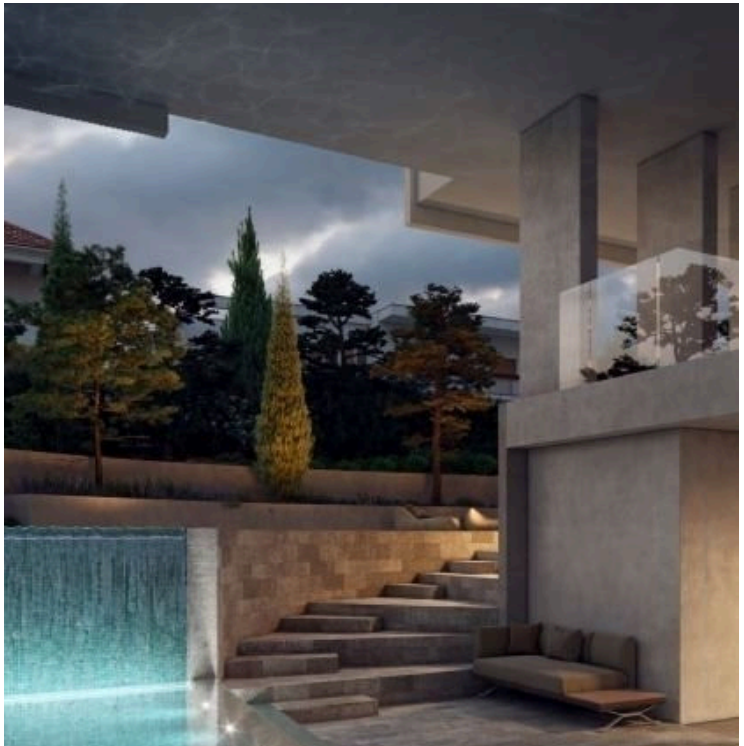
#4818

# New Luxury Penthouse At Panthea Area

 Panthea, Limassol

**€465,000** +VAT





# Overview

## Specifications

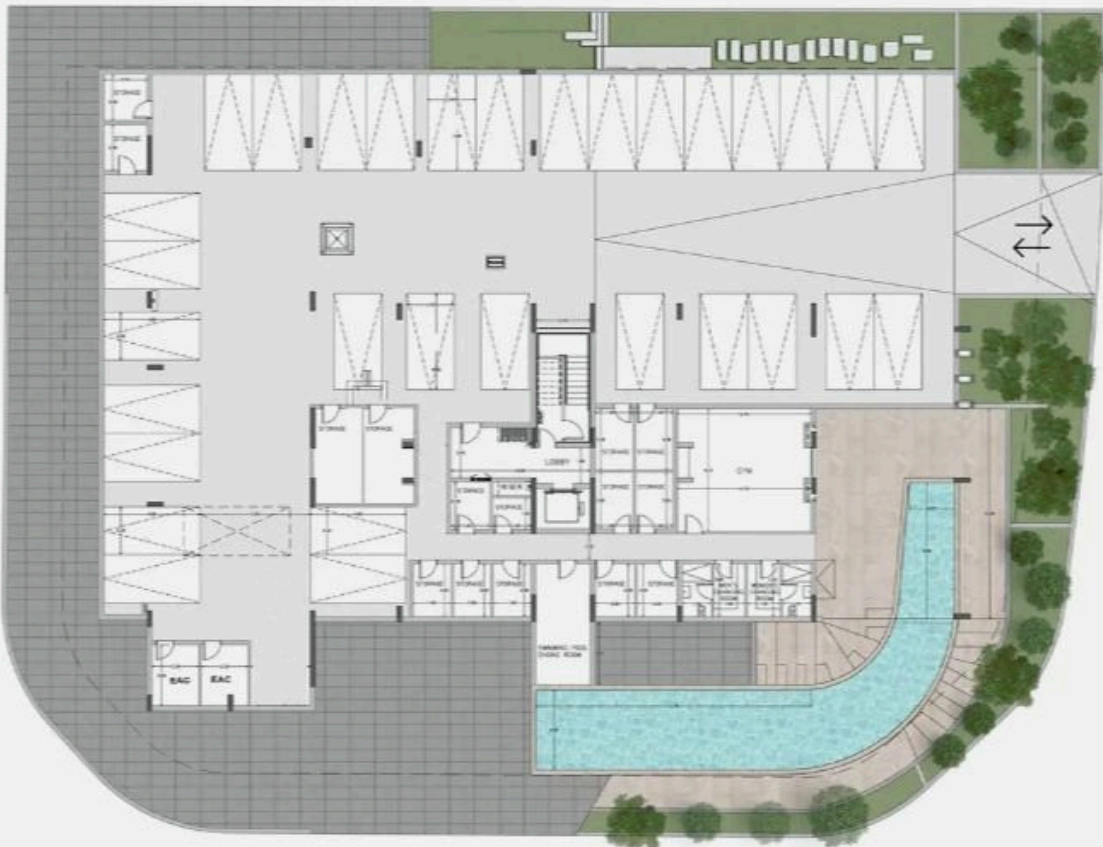
Bedrooms		Bathrooms		Covered		
 2		 2		 87 m <sup>2</sup>		
Type	Apartment				Year of construction	2025
Status	Under construction				Energy efficiency rating	 A

## Description

The luxurious building sits in a quiet residential neighborhood in Panthea with abundant natural light and spectacular views of the Limassol coastline and city from every apartment.

\*Location on the map is indicative.

## Floor plans



# Additional information

## Facilities

Gym	Parking, Covered	Pool, Communal
Storage		

## Features

En suite bathroom	Roof garden
-------------------	-------------

## Contact us



**Vassilis Papadopoulos**

 (+357) 99662023

 [info@cyprusdomus.com](mailto:info@cyprusdomus.com)