

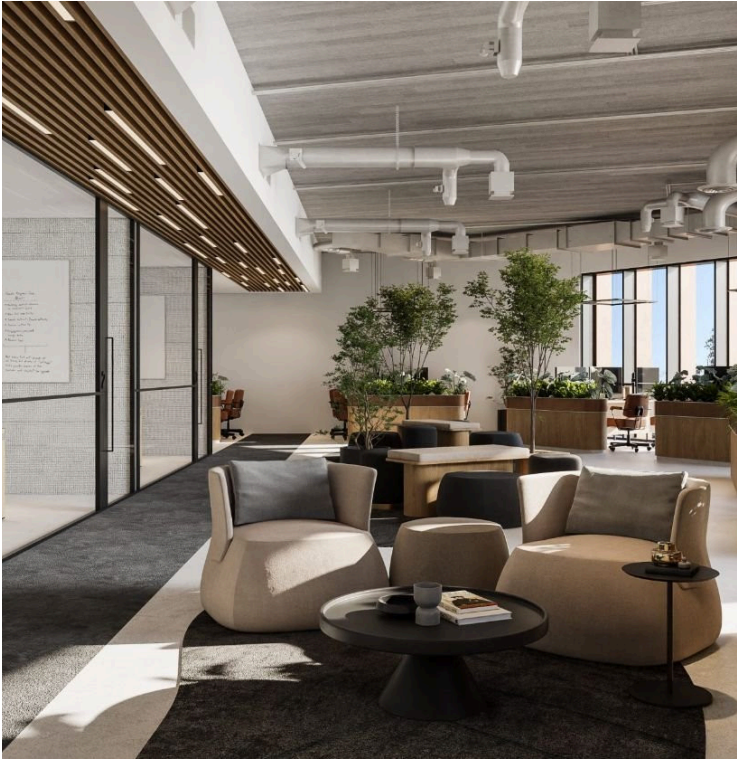
#4821

# New Commercial Building in Limassol's Historical Center

 Historical Center, Limassol

**€4,800,000** +VAT





# Overview

## Specifications

Covered

 **980 m<sup>2</sup>**

Type

**Commercial Building**

Energy efficiency rating

 **A**

Status

**Off plan**

## Description

This commercial development is not just a workspace but a statement of sophistication and environmental responsibility.

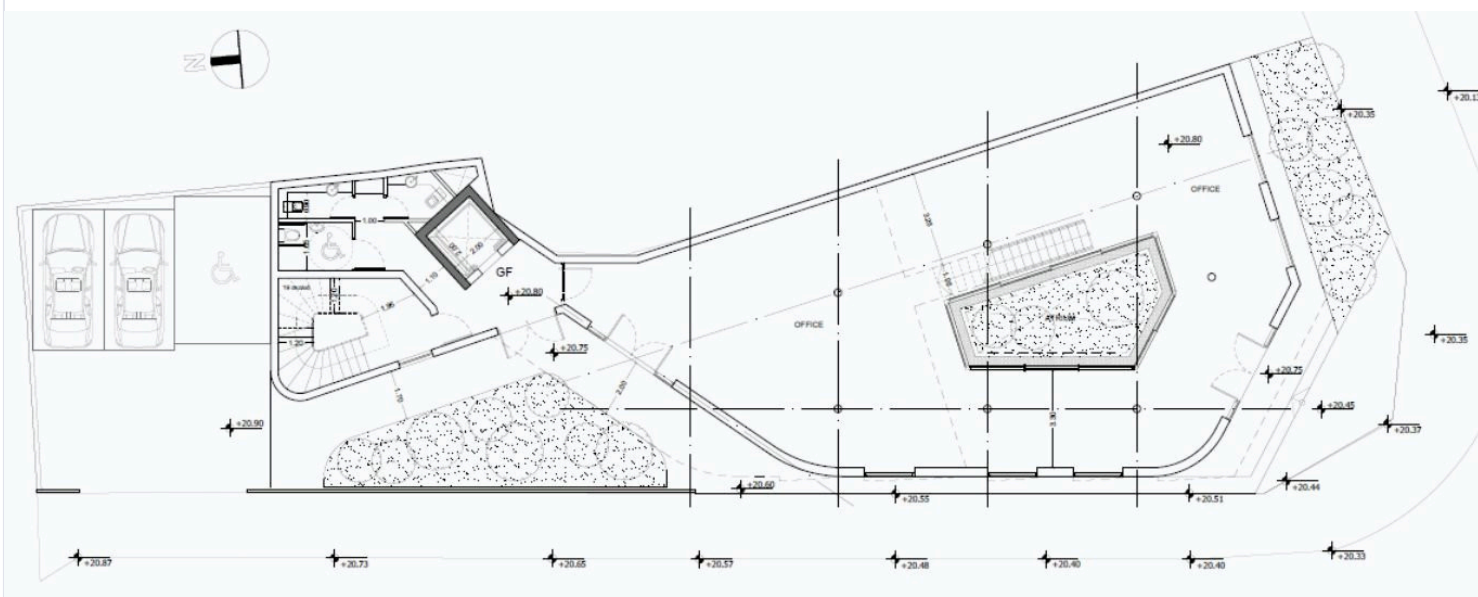
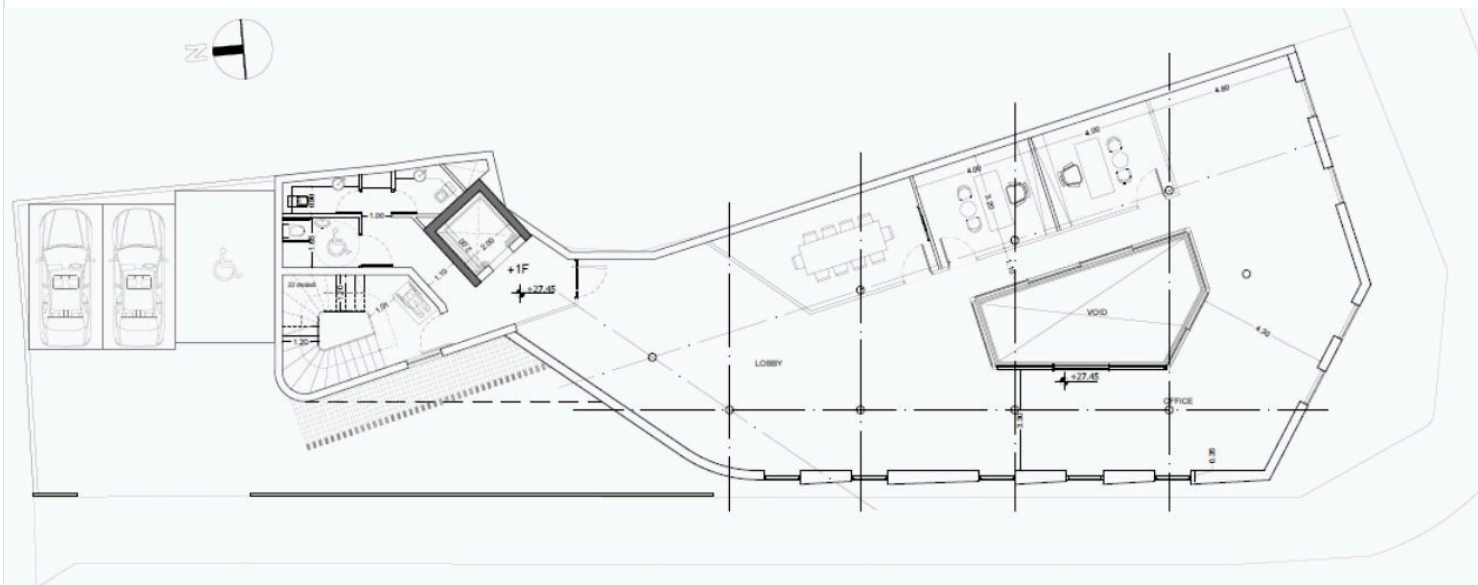
The development is designed to cater to every business need, offering ample parking for three vehicles, a verdant roof garden for leisure and corporate events, and three versatile entrances.

This allows for the potential separation of the ground floor and mezzanine from the upper stories, affording distinct tenants their own dedicated spaces.

\*Location on the map is indicative.



# Floor plans



# Additional information

## Facilities

Aircondition, Central system

Heating, Central

Solar photovoltaic panels

## Features

24-hour security

Entrance gate, automated

High ceilings

Near amenities

Raised floors

Roof garden

Thermal insulation

## Contact us



**Katerina Athini**

✉ [katerina@cyprusdomus.com](mailto:katerina@cyprusdomus.com)

