

#5209

New Modern Office for Rent in Germasogeia area.

📍 Germasogeia Tourist Area, Limassol

€26,500 /month





Overview

Specifications

Covered

 **379 m²**

Type	Office
Covered veranda	102 m²
Uncovered veranda	85 m²

Status	Under construction
Energy efficiency rating	 A

Description

The business center is designed in the modern Open Space style. Open space allows you to effectively use every square inch of the useful space, configure areas tailored for specific requirements of a particular project.

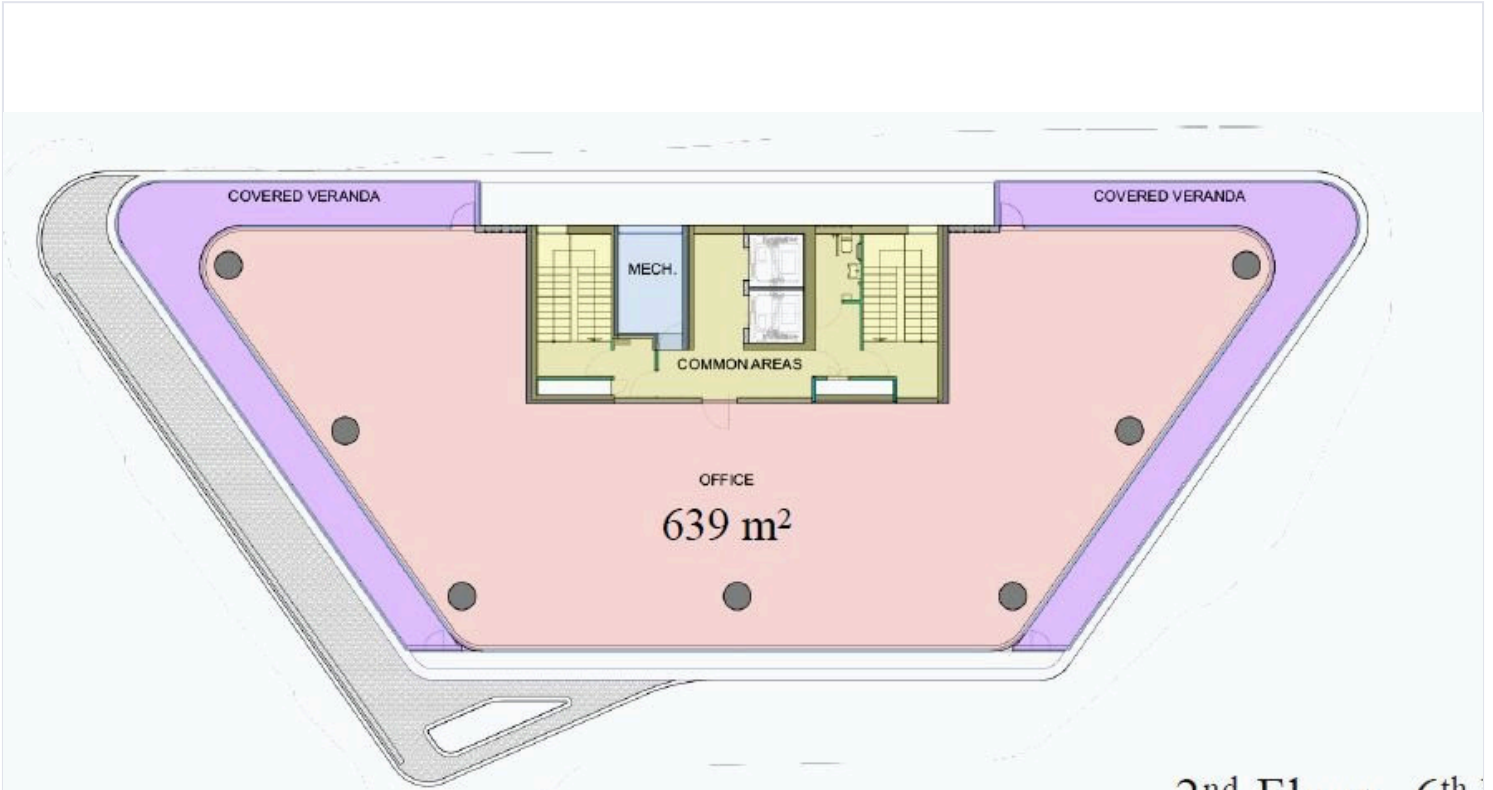
The building is equipped with everything necessary for productive work, leisure and sport. Gym, cozy cafe, conference rooms, stylish lobby, presentable offices of various sizes, guarded two-level parking.

Even the rooftop is a separate area for relaxation and meetings. There is a green garden and a barbecue area for employees.

*Location on map is indicative.

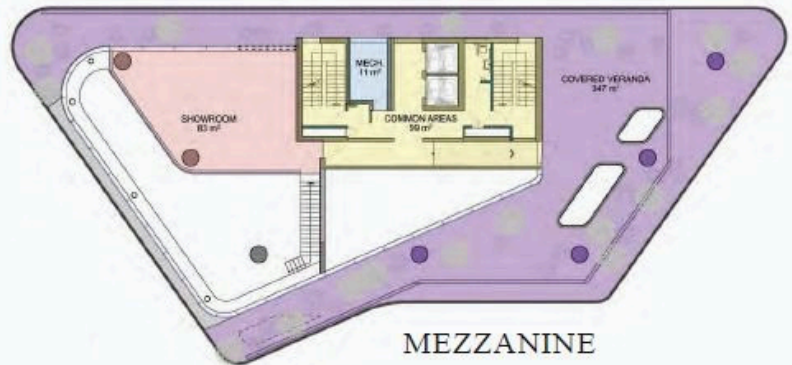


Floor plans



2nd Floor - 6th

GROUND FLOOR



MEZZANINE



Additional information

Facilities

Aircondition, Central system

Elevator

Gym

Features

24-hour security

Business facilities

Conference hall

Double glazing

Energy efficient doors/windows

Entrance gate

Fiber optics

Lobby

Reception

Roof garden

Contact us



Katerina Athini

katerina@cyprusdomus.com

