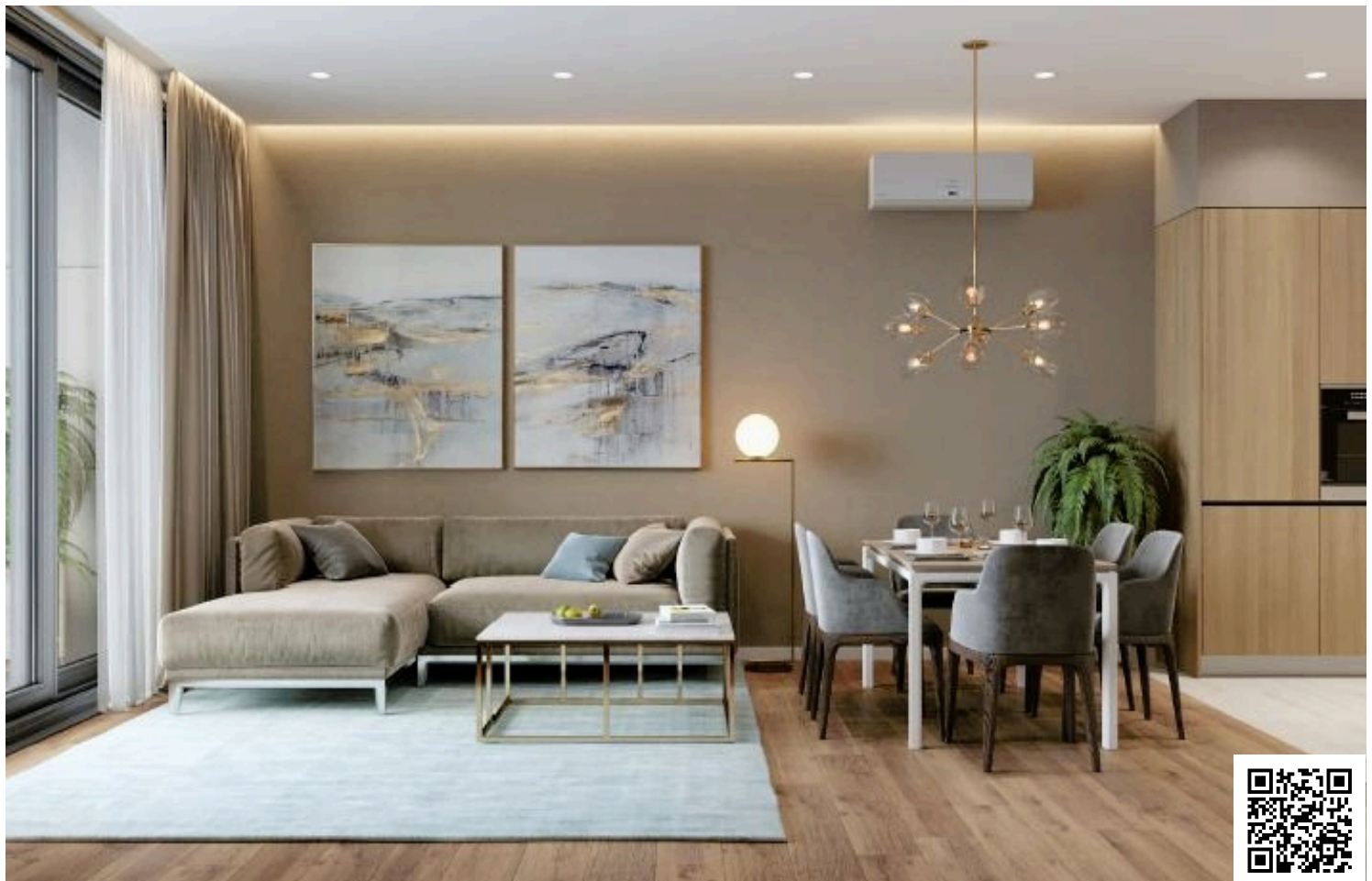


#5215

New Modern Penthouse with Roof Garden for rent in Neapolis area.

📍 Neapolis, Limassol

€5,000 /month





Overview

Specifications

Bedrooms

 2

Bathrooms

 2

Covered

 93 m²

Type

Apartment

Status

Key ready

Description

The complex is designed for three 2 bedroom apartments with large balconies and terraces on the roof of the building, panoramic windows overlooking an unforgettable sea view and vibrant city life.

The apartment consists of an open plan kitchen, dining and living area, 2 bedrooms, 2 bathrooms (1 ensuite).

It has 1 covered parking and 1 storage.

*Location on map is indicative



Floor plans



Additional information

Facilities

Aircondition, Central system

Heating, Underfloor

Parking, Covered

Features

Easy access to main roads

En suite bathroom

Near amenities

Open plan

Roof garden

Contact us



Katerina Athini

✉ katerina@cyprusdomus.com

