

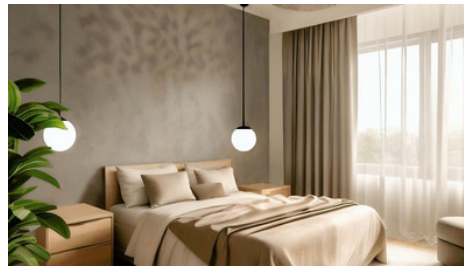
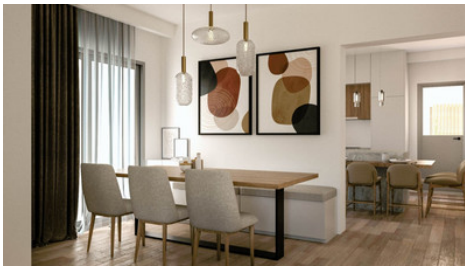


New Semi-Detached House in Kolossi area

📍 Limassol, Kolossi

#5321





Price	€320,000 +VAT	Type	House
Bedrooms	3	Bathrooms	2
Covered	138 m ²	Plot	157 m ²
Status	Off plan	Area	Limassol, Kolossi

Description

This semi-detached house is part of a project of 3 houses in total.

The house on the first floor consists of an open plan kitchen, dining and living area, and 1 guest toilet. On the first floor you will find the master bedroom with walk-in closet and ensuite bathroom, and 2 more bedrooms sharing 1 bathroom.

*Location on map is indicative.

Katerina Athini

Admin

✉ katerina@cyprusdomus.com

Facilities

Parking, Covered

Features

Walk-in closet

En suite Bathroom

Floor plans

