

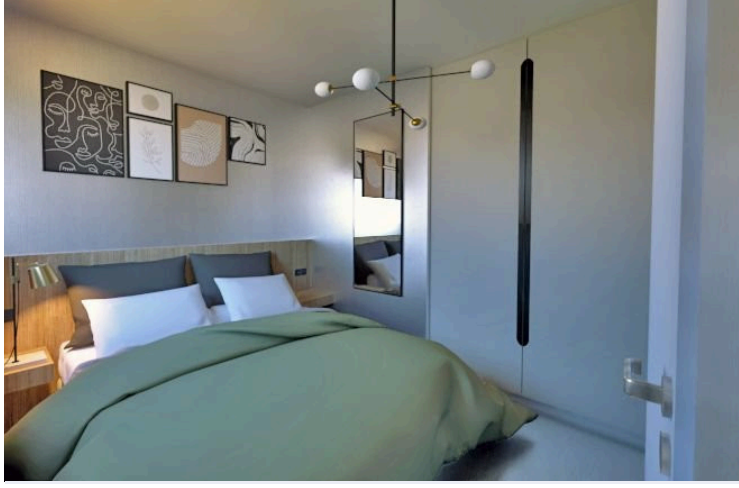
#5383

New Unique Design House In Moni Area

 Moni, Limassol





€284,000 +VAT





Overview

Specifications

Bedrooms		Bathrooms		Covered	
 2		 2		 92 m ²	
Type		House			
Plot		212 m ²			
Status		Off plan			
		Year of construction		2024	
		Energy efficiency rating		 A	

Description

Each villa boasts a private garden, private parking, covered/uncovered terraces.

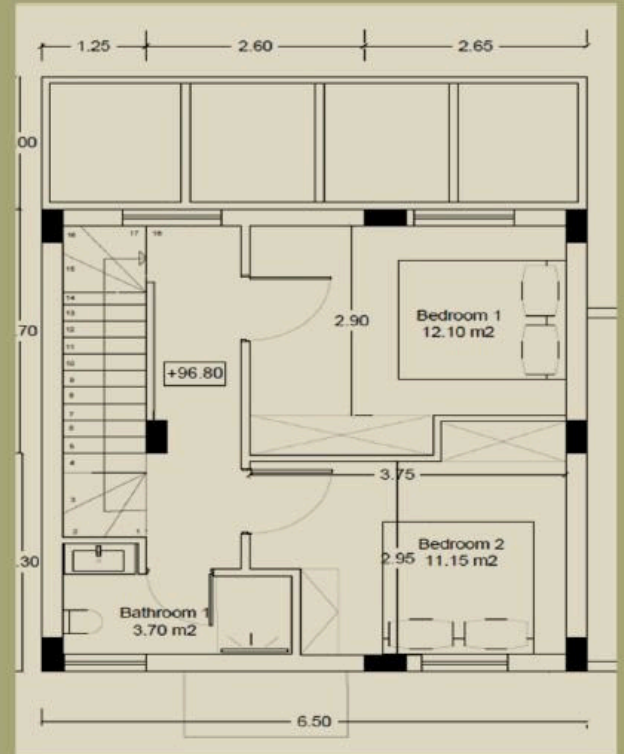
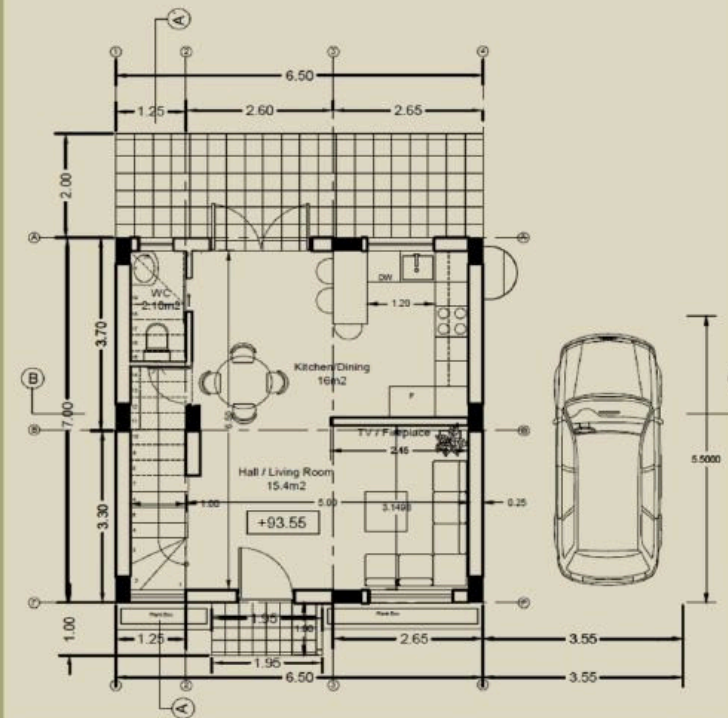
Residents benefit from the picturesque landscape.

The contemporary design, the privacy, and the surrounding nature make it the ideal place for you to create a lovely home away from the city hustle.

*Location on the map is indicative.



Floor plans



Additional information

Facilities

Parking, Covered

Pool, Optional

Features

Near amenities

Thermal insulation

Contact us



Vassilis Papadopoulos

📞 (+357) 99662023

✉️ info@cyprusdomus.com

