

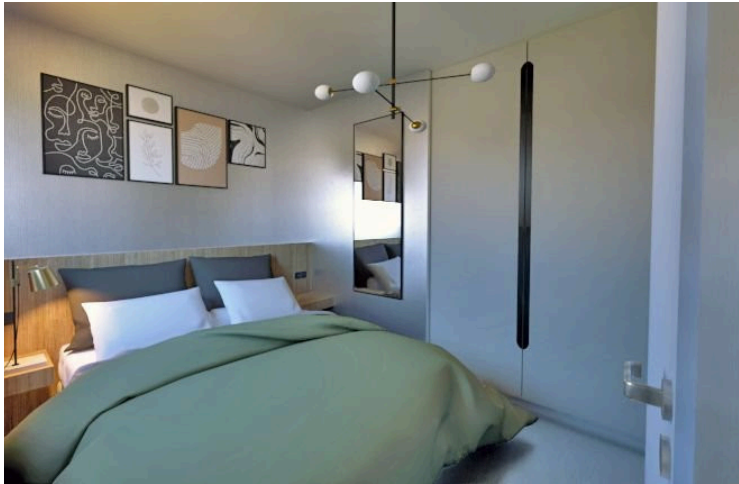
#5384

# New Houses In Moni Area

 Moni, Limassol





**€309,000** +VAT





# Overview

## Specifications

Bedrooms		Bathrooms		Covered	
 2		 2		 92 m <sup>2</sup>	
Type		House		Status	
Plot		255 m <sup>2</sup>		Off plan	
Covered veranda		14 m <sup>2</sup>		Year of construction	
Roof garden		23 m <sup>2</sup>		2024	
				Energy efficiency rating	
				 A	

## Description

Each villa boasts a private garden, private parking, covered/uncovered terraces.

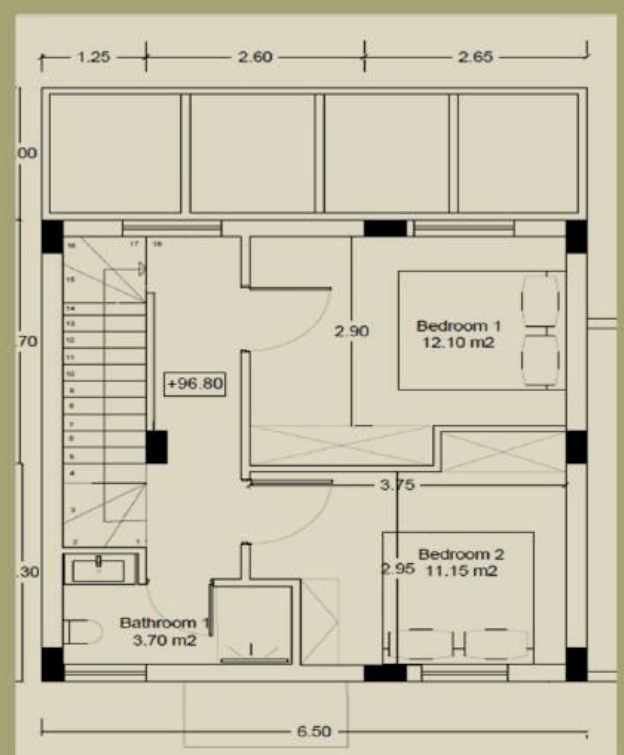
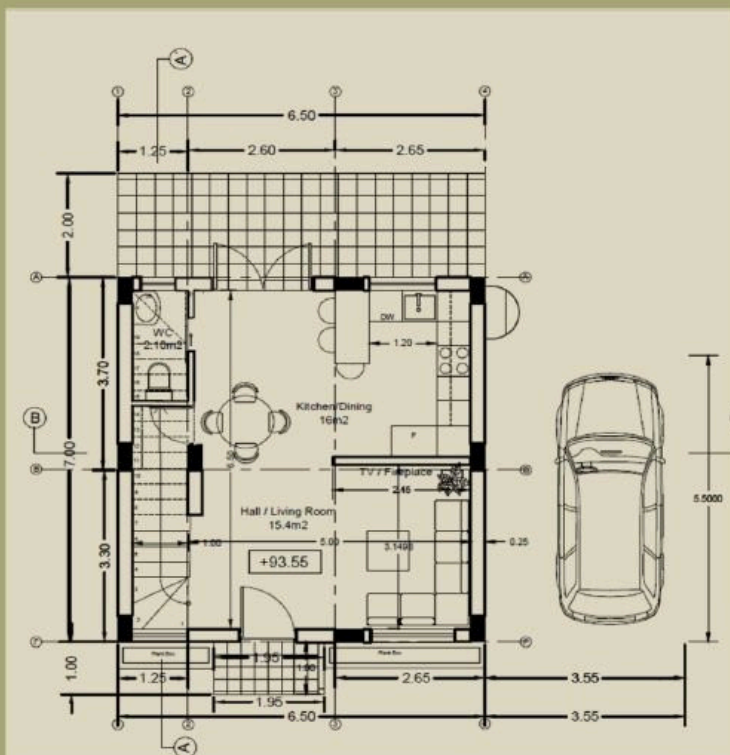
Residents benefit from the picturesque landscape.

The contemporary design, the privacy, and the surrounding nature make it the ideal place for you to create a lovely home away from the city hustle.

\*Location on the map is indicative.



# Floor plans



# Additional information

## Facilities

Parking, Covered

Pool, Optional

## Features

Near amenities

Thermal insulation

## Contact us



**Vassilis Papadopoulos**

📞 (+357) 99662023

✉️ [info@cyprusdomus.com](mailto:info@cyprusdomus.com)

