

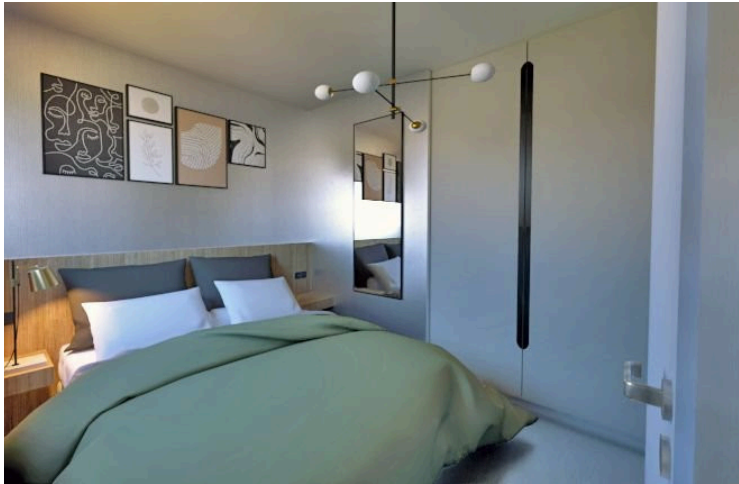
#5384

# New Unique Design Houses In Moni Area

 Moni, Limassol

**€290,000** +VAT





# Overview

## Specifications

Bedrooms


 2

Bathrooms

 2

Covered

 92 m<sup>2</sup>

Type	House	Year of construction	2024
Plot	255 m <sup>2</sup>	Energy efficiency rating	 A
Status	Off plan		

## Description

Each villa boasts a private garden, private parking, covered/uncovered terraces.

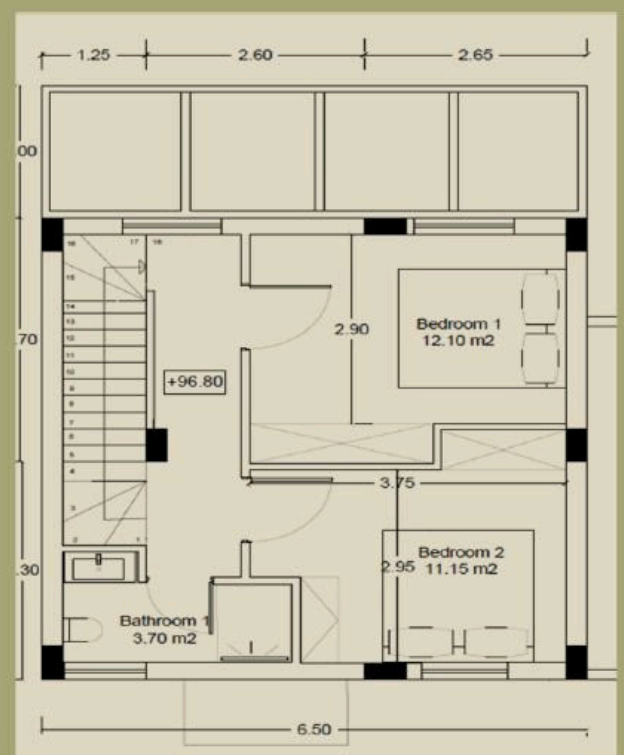
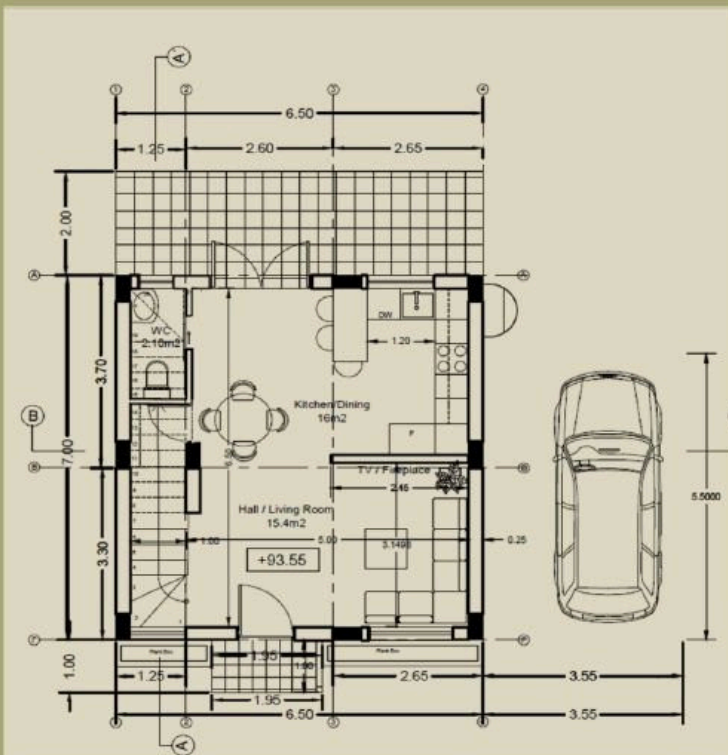
Residents benefit from the picturesque landscape.

The contemporary design, the privacy, and the surrounding nature make it the ideal place for you to create a lovely home away from the city hustle.

\*Location on the map is indicative.



# Floor plans



# Additional information

## Facilities

Parking, Covered

Pool, Optional

## Features

Near amenities

Thermal insulation

## Contact us



**Vassilis Papadopoulos**

 (+357) 99662023

 [info@cyprusdomus.com](mailto:info@cyprusdomus.com)

