

#5622

New Contemporary Villa for sale in Souni area.

 Souni, Limassol

€325,000 +VAT





Overview

Specifications

Bedrooms



3

Bathrooms



2

Covered

100 m²

Type

House

Toilets

1

Plot

306 m²

Status

Under construction

Energy efficiency rating

A

Description

This beautiful residential development on the outskirts of Limassol, consists of 11 detached stunning 2 bed/3 bed/ and 4 bedroom villas.

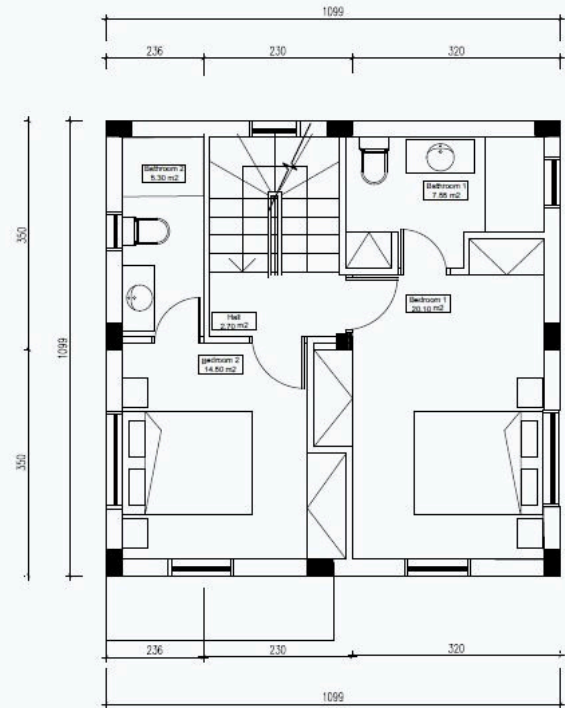
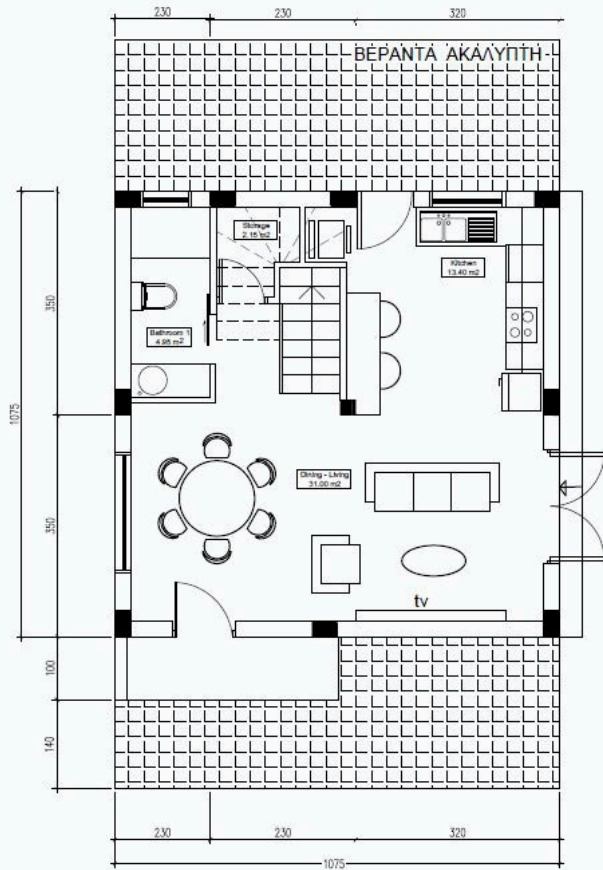
Each house boasts a private garden, private parking, terraces and the option to install a swimming pool. Residents benefit from the picturesque landscape and partial sea view.

*Option to personalize your home with additional features like a roof garden and pool.

*Location on map is indicative.



Floor plans



Additional information

Facilities

Pool, Optional

Features

Easy access to highway

Thermal insulation

Contact us



Katerina Athini

✉ katerina@cyprusdomus.com

